

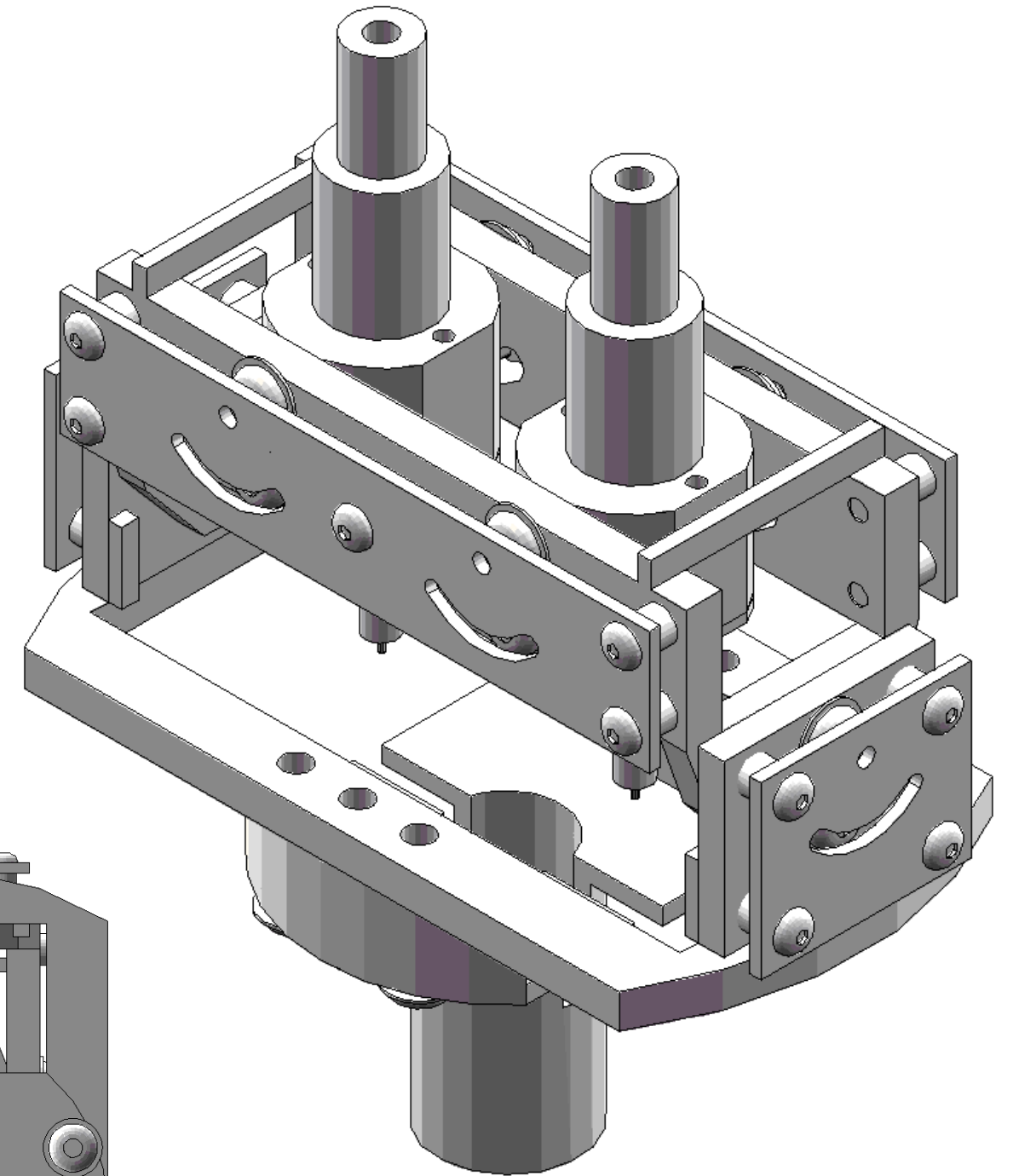
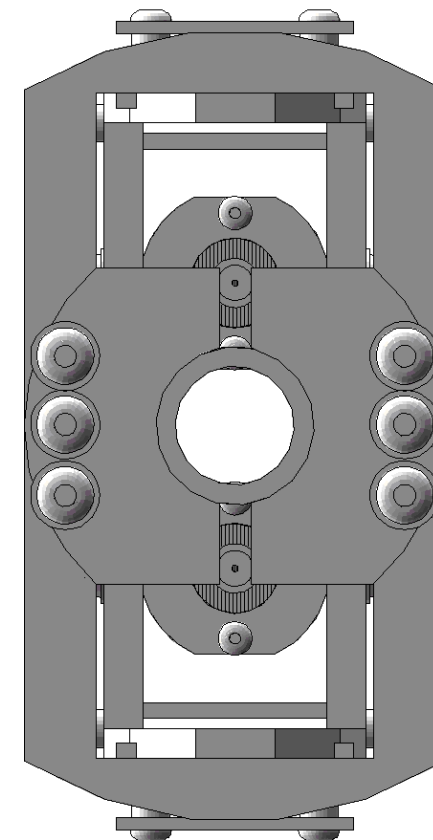
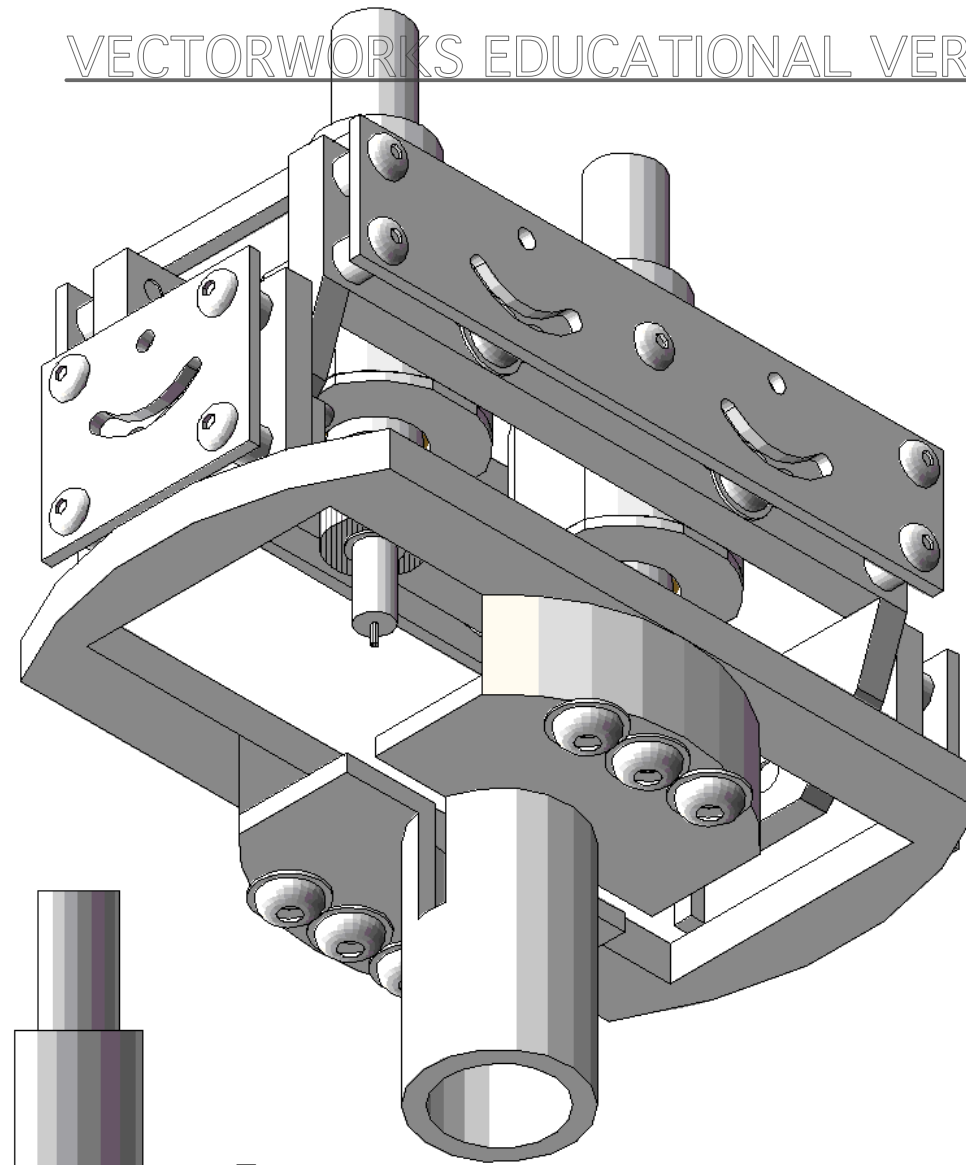
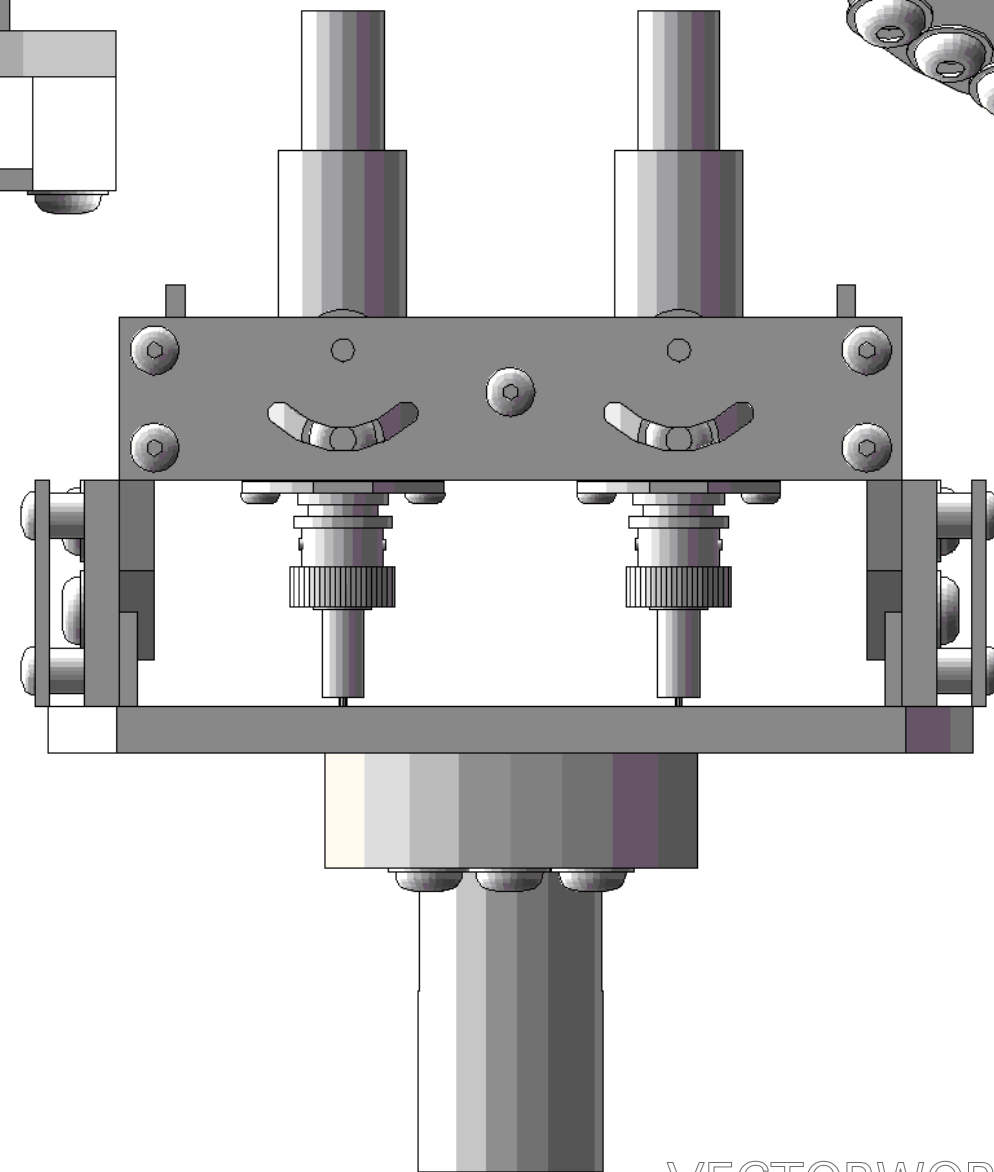
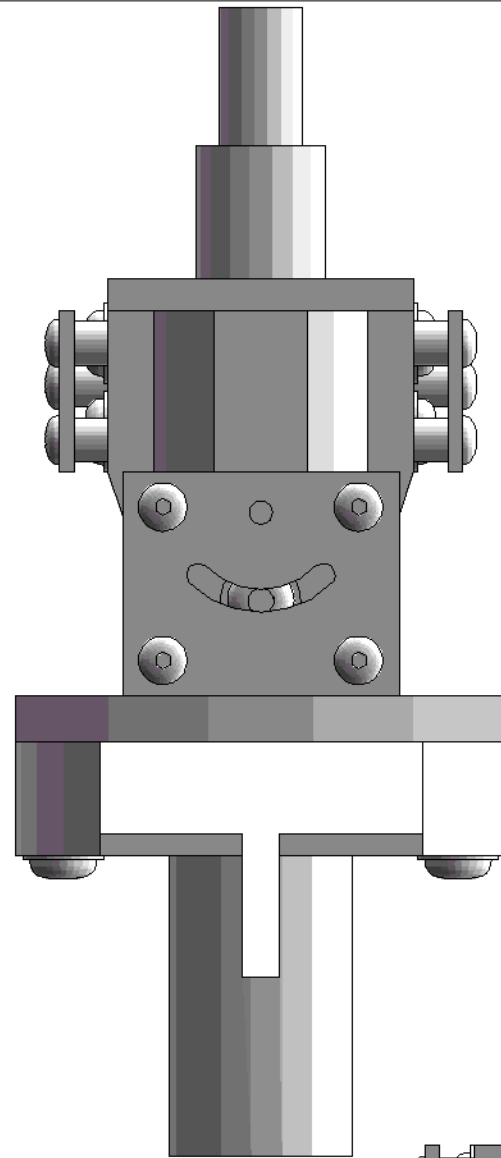
NOTES.

1. ONLY MATERIAL TO BE USED IS STAINLESS STEEL 316.
2. PPPL WILL SILVER PLATE ALL SCREWS.


VECTORWORKS EDUCATIONAL VERSION

REVISION HISTORY

REV	DESCRIPTION	DATE	APPROVED



VECTORWORKS EDUCATIONAL VERSION

 FLORIDA INTERNATIONAL UNIVERSITY DEPARTMENT OF PHYSICS 11200 SW 8TH ST, MIAMI, FL 33199		
DATE 04/04/11	PROJECT	SHEET 1 OF 1
SCALE	DIAGNOSTIC DESIGN	
TITLE	DRAWN BY RAMONA VALENZUELA PEREZ	
MACRO ASSEMBLED VIEW		

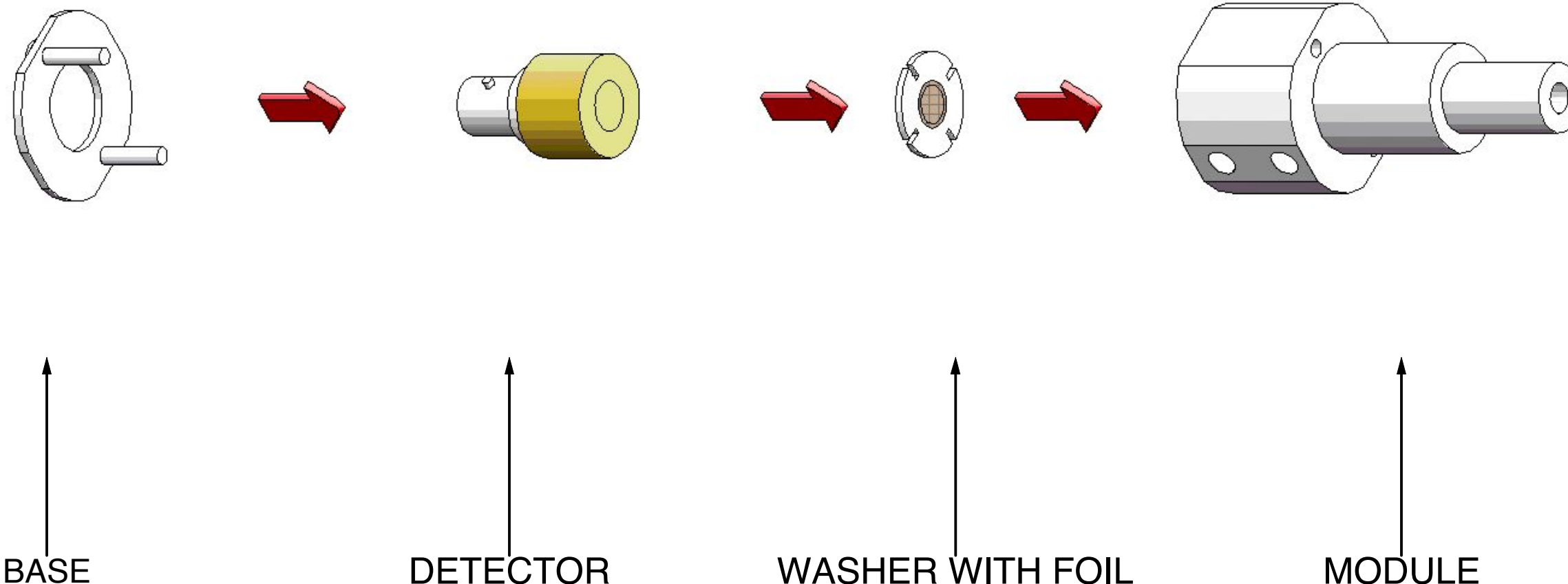
NOTES.

- 1. ONLY MATERIAL TO BE USED IS STAINLESS STEEL 316.
- 2. PPPL WILL SILVER PLATE ALL SCREWS.

VECTORWORKS EDUCATIONAL VERSION

REVISION HISTORY

REV	DESCRIPTION	DATE	APPROVED



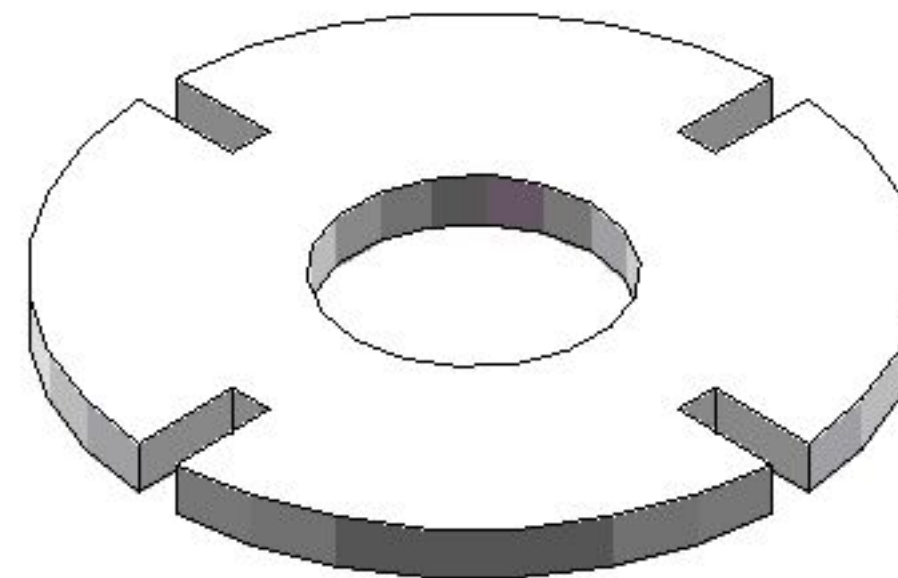
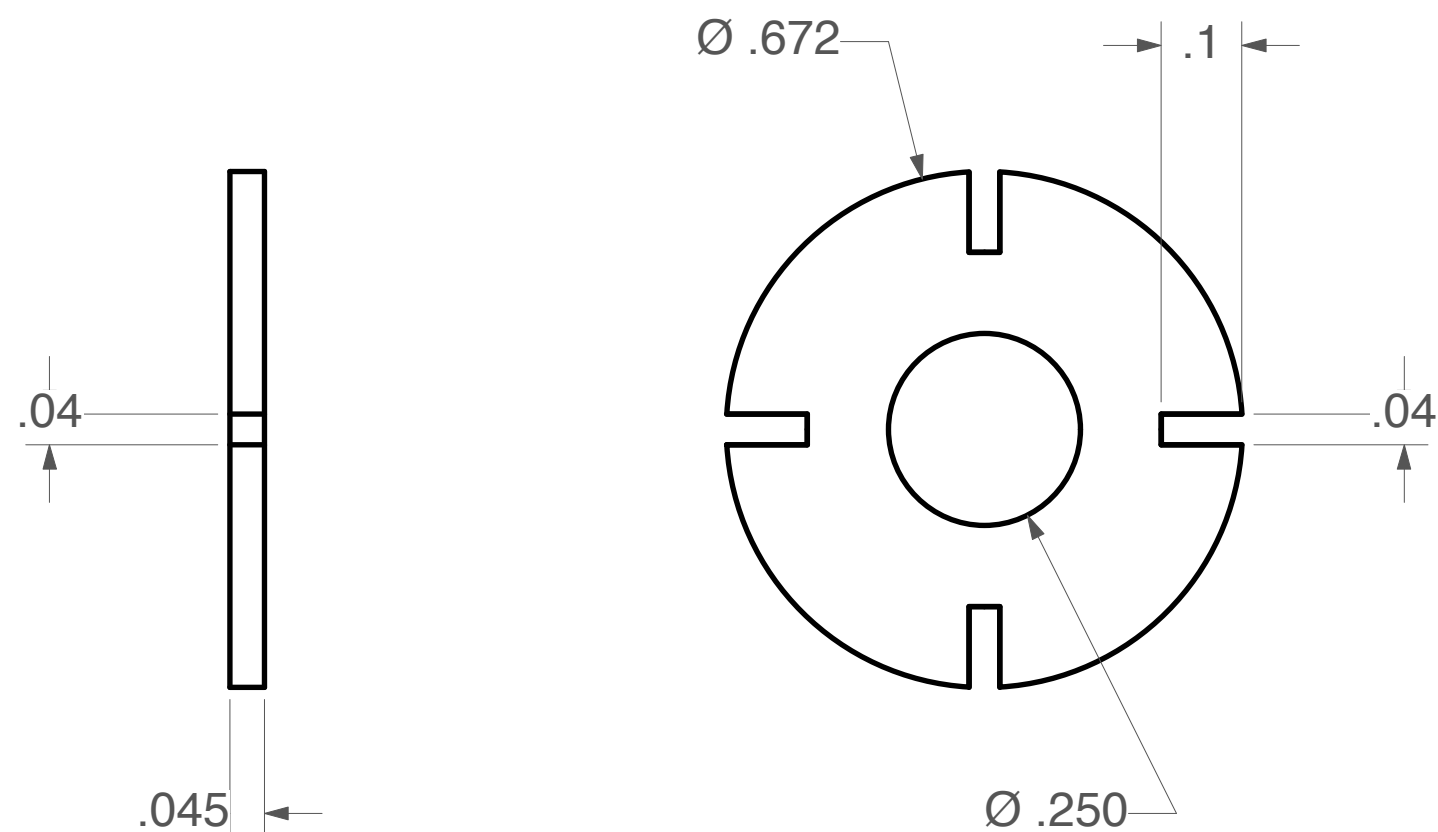
FIU			FLORIDA INTERNATIONAL UNIVERSITY DEPARTMENT OF PHYSICS 11200 SW 8TH ST, MIAMI, FL 33199
DATE 04/04/11	PROJECT	SHEET 1 OF 1	
SCALE	DIAGNOSTIC DESIGN		
TITLE	DRAWN BY		
MODULE ASSEMBLED VIEW	RAMONA VALENZUELA PEREZ		

VECTORWORKS EDUCATIONAL VERSION

REV	DESCRIPTION	DATE	APPROVED

NOTES.

1. WASHER MADE TO FIT INSIDE MODULE.



ALL DIMENSIONS ARE IN INCHES.
TOLERANCES UNLESS OTHERWISE SPECIFIED:
X.X +/- .03
X.XX +/- .01
X.XXX +/- .005



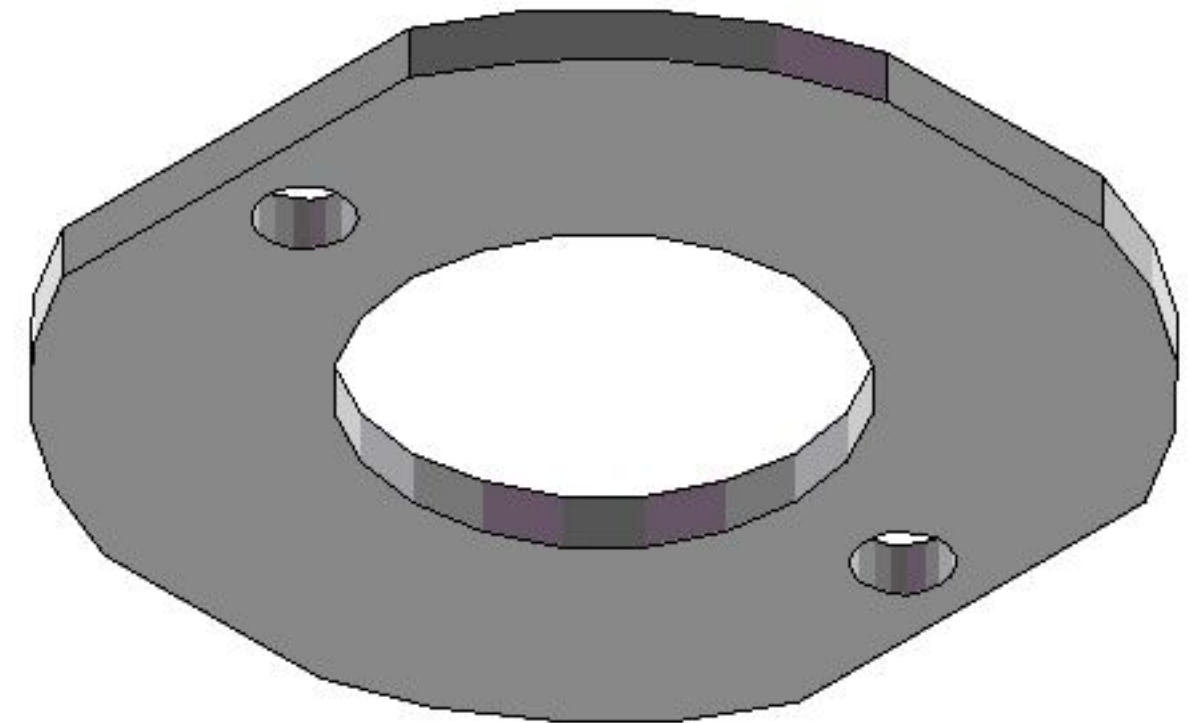
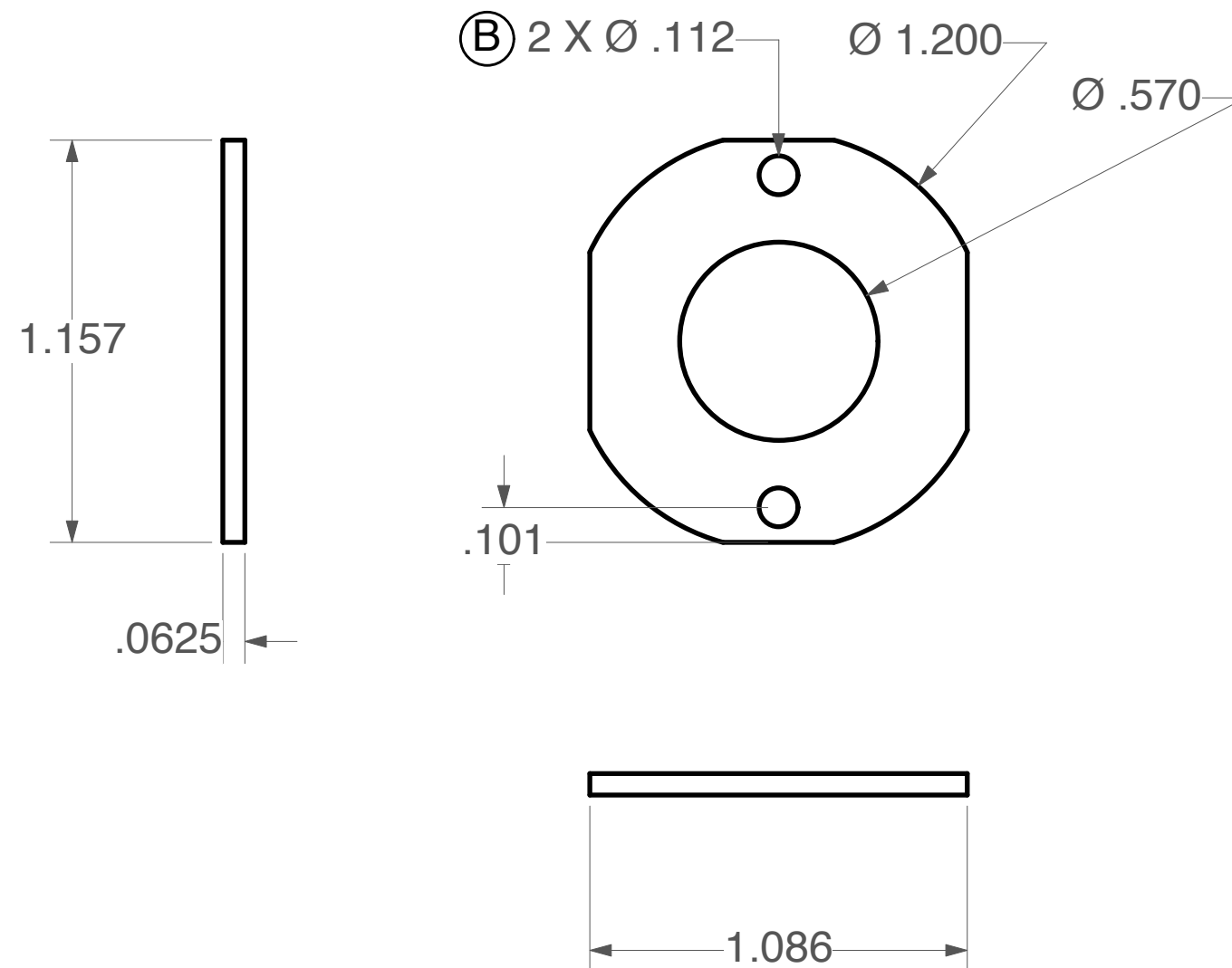
FLORIDA INTERNATIONAL UNIVERSITY
DEPARTMENT OF PHYSICS
11200 SW 8TH ST, MIAMI, FL 33199

DATE 04/04/11	PROJECT DIAGNOSTIC DESIGN	SHEET 1 OF 1
SCALE 4:1	TITLE WASHER FOR FOIL	DRAWN BY RAMONA VALENZUELA PEREZ

NOTES.

1. BASE IS MADE TO FIT TO BOTTOM OF MODULE; ALL BORED HOLES MUST ALIGN WITH BOTTOM OF MODULE.
2. (B) BORE THRU FOR A 4-40 .112 INCH DIAMETER BUTTON HEAD SOCKET CAP SCREW.

REV	DESCRIPTION	DATE	APPROVED



ALL DIMENSIONS ARE IN INCHES.
TOLERANCES UNLESS OTHERWISE SPECIFIED:

X.X	+/- .03	∠ +/- .5°
X.XX	+/- .01	
X.XXX	+/- .005	



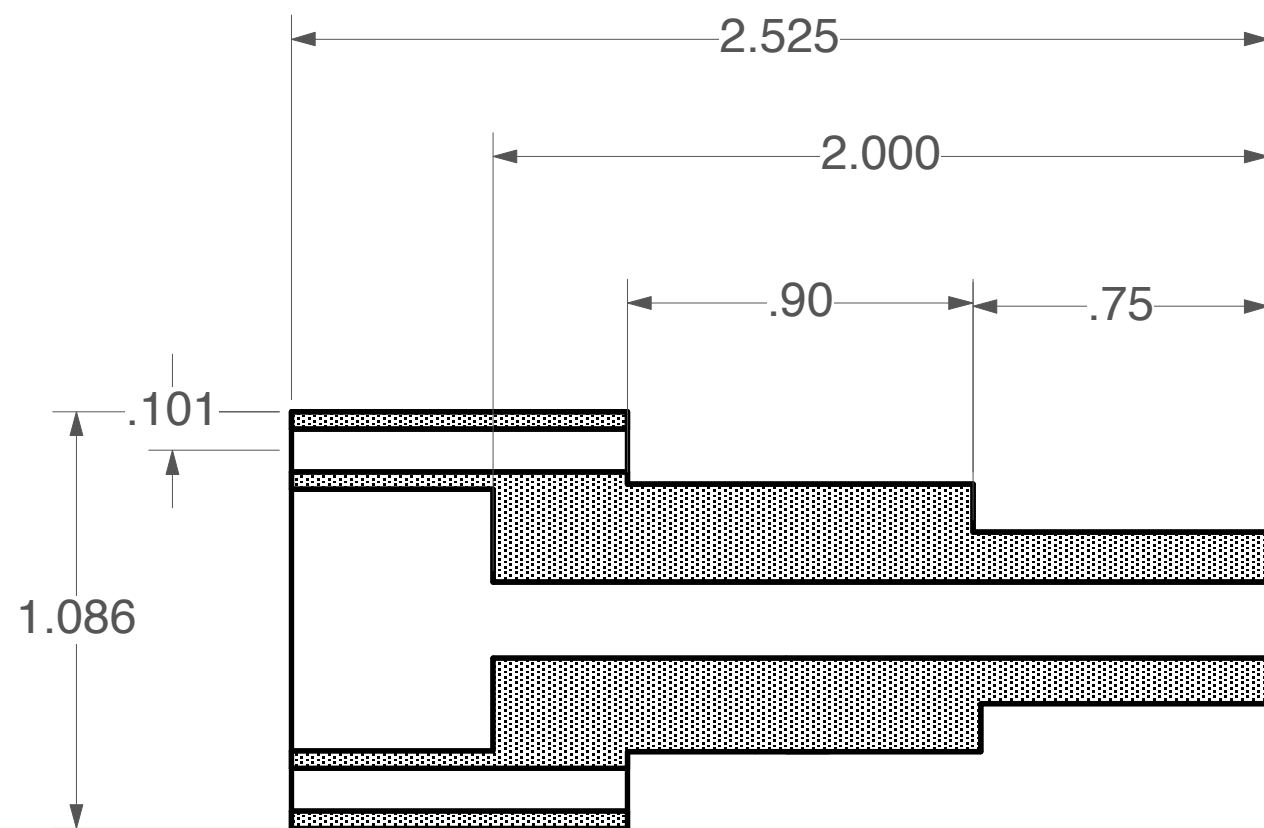
FLORIDA INTERNATIONAL UNIVERSITY
DEPARTMENT OF PHYSICS
11200 SW 8TH ST, MIAMI, FL 33199

DATE 04/04/11	PROJECT	SHEET 1 OF 1
SCALE 2:1	DIAGNOSTIC DESIGN	
TITLE	DRAWN BY RAMONA VALENZUELA PEREZ	
BASE		

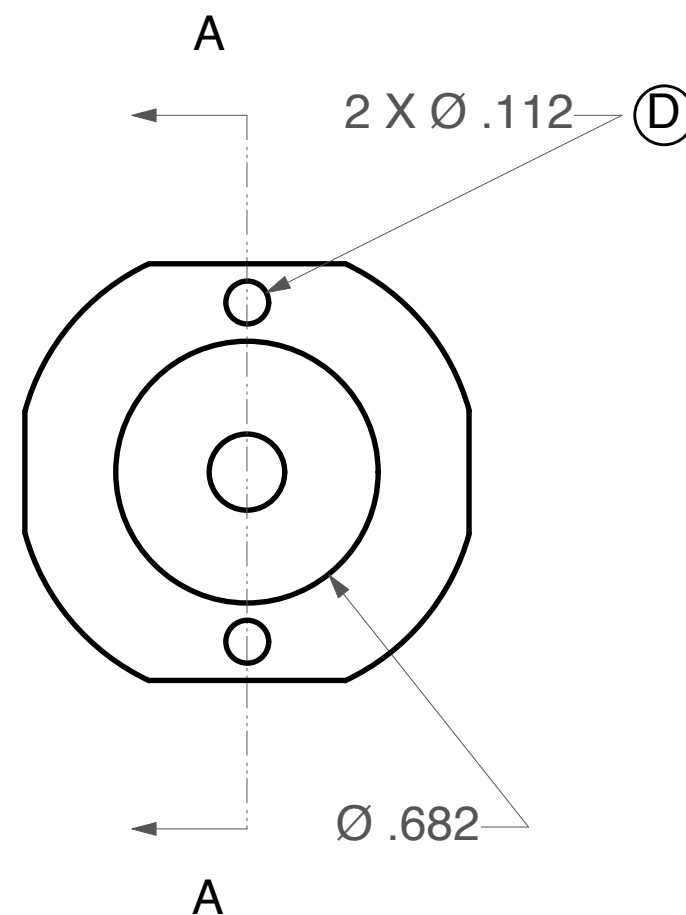
NOTES.

1. BOTTOM OF MODULE IS MADE TO FIT TO BASE, THEREFORE ALL BOTTOM HOLES ALIGN WITH BORED BASE HOLES.
2. (D) TAP THRU FOR A 4-40 .112 INCH DIAMETER BUTTON HEAD SOCKET CAP SCREW.

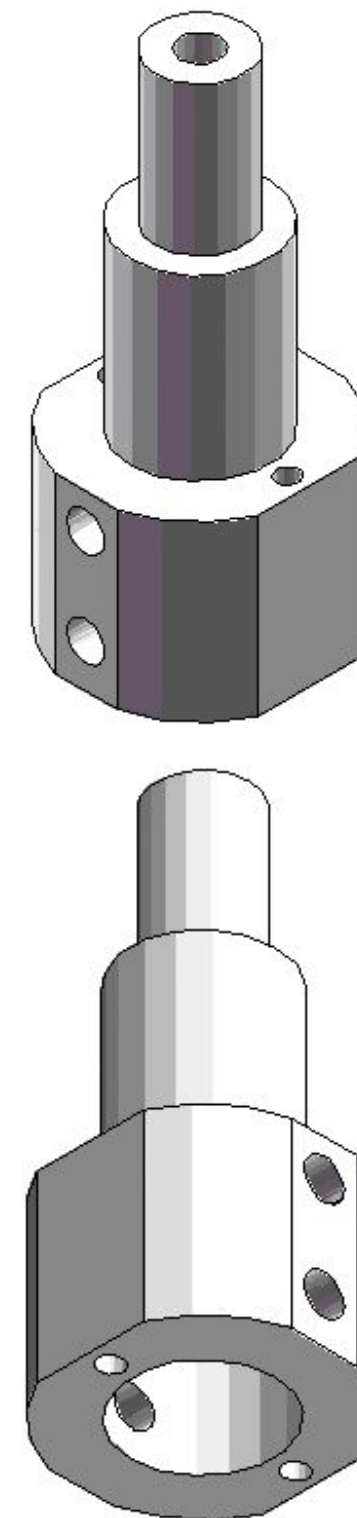
REV	DESCRIPTION	DATE	APPROVED



A SECTIONAL VIEW A



BOTTOM VIEW



ALL DIMENSIONS ARE IN INCHES.
TOLERANCES UNLESS OTHERWISE SPECIFIED:

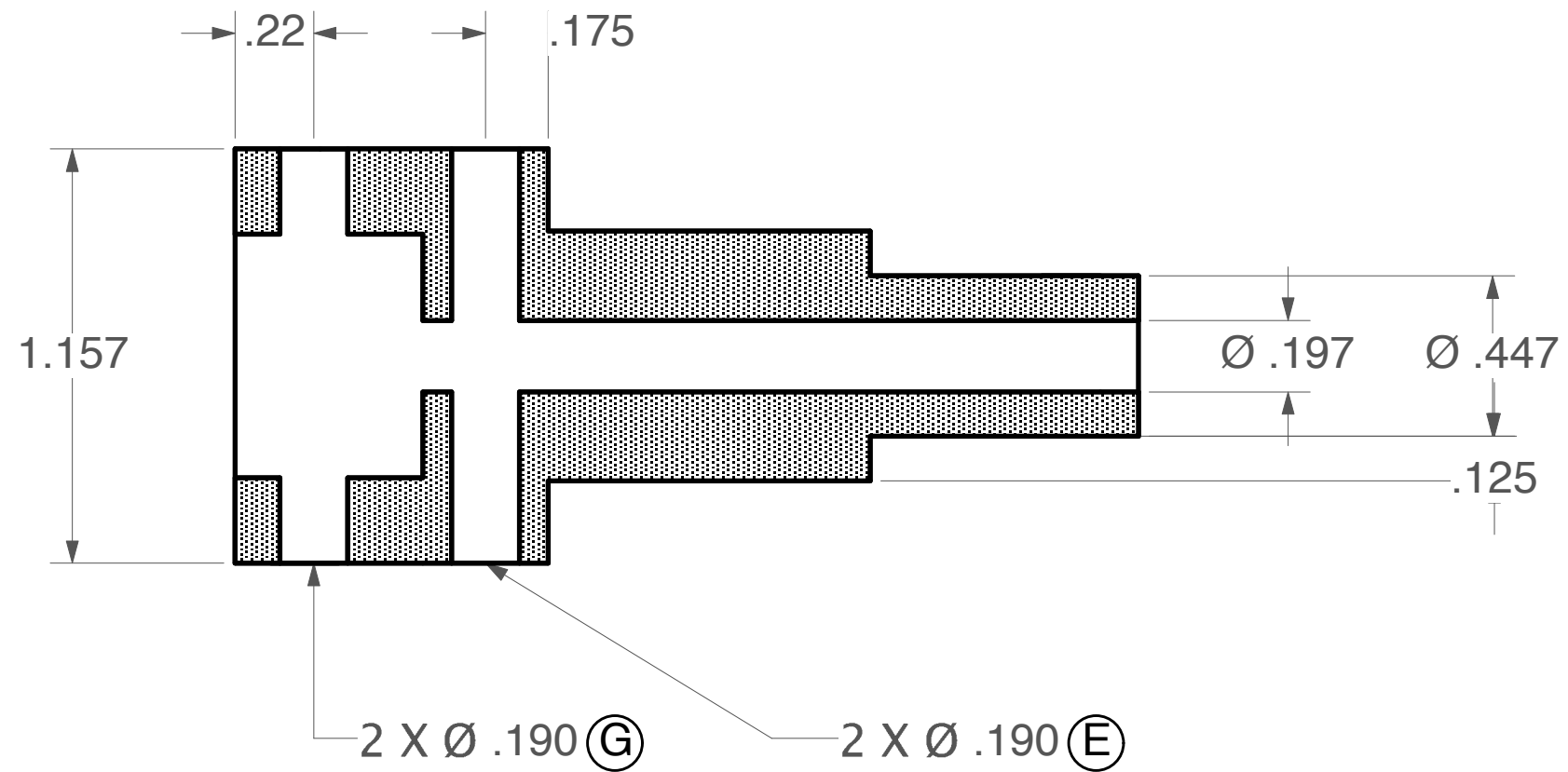
X.X	+/- .03	∠ +/- .5°
X.XX	+/- .01	
X.XXX	+/- .005	

FIU	FLORIDA INTERNATIONAL UNIVERSITY DEPARTMENT OF PHYSICS 11200 SW 8TH ST, MIAMI, FL 33199	
	DATE 12/01/10	PROJECT DIAGNOSTIC DESIGN
SCALE 1:1	TITLE MODULE	SHEET 1 OF 2
DRAWN BY RAMONA VALENZUELA PEREZ		

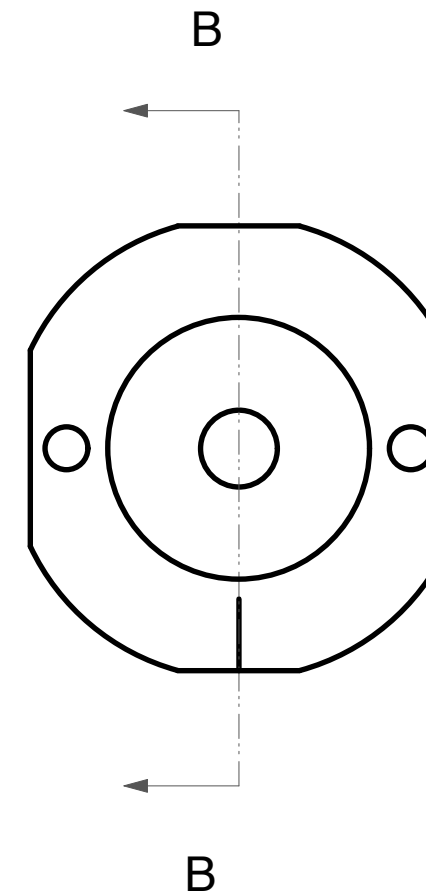
NOTES.

1. BOTTOM OF MODULE IS MADE TO FIT TO BASE, ALL BOTTOM HOLES ALIGN WITH BORED BASE HOLES.
2. (E) TAP THRU FOR A 10-32 .190 INCH DIAMETER BUTTON HEAD SOCKET CAP SCREW.
3. (G) TAP THRU FOR A 10-32 .190 INCH DIAMETER BUTTON HEAD SOCKET CAP SCREW.

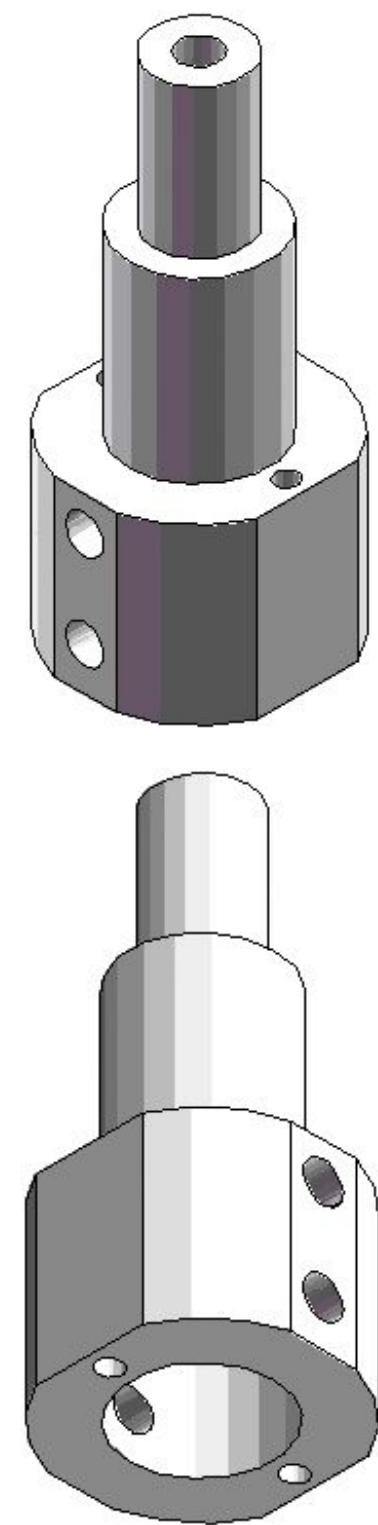
REV	DESCRIPTION	DATE	APPROVED



B SECTIONAL VIEW B



BOTTOM VIEW



ALL DIMENSIONS ARE IN INCHES.
TOLERANCES UNLESS OTHERWISE SPECIFIED:
X.X +/- .03
X.XX +/- .01
X.XXX +/- .005



FLORIDA INTERNATIONAL UNIVERSITY
DEPARTMENT OF PHYSICS
11200 SW 8TH ST, MIAMI, FL 33199

DATE 12/01/10	PROJECT DIAGNOSTIC DESIGN	SHEET 2 OF 2
SCALE 1:1	TITLE MODULE	DRAWN BY RAMONA VALENZUELA PEREZ

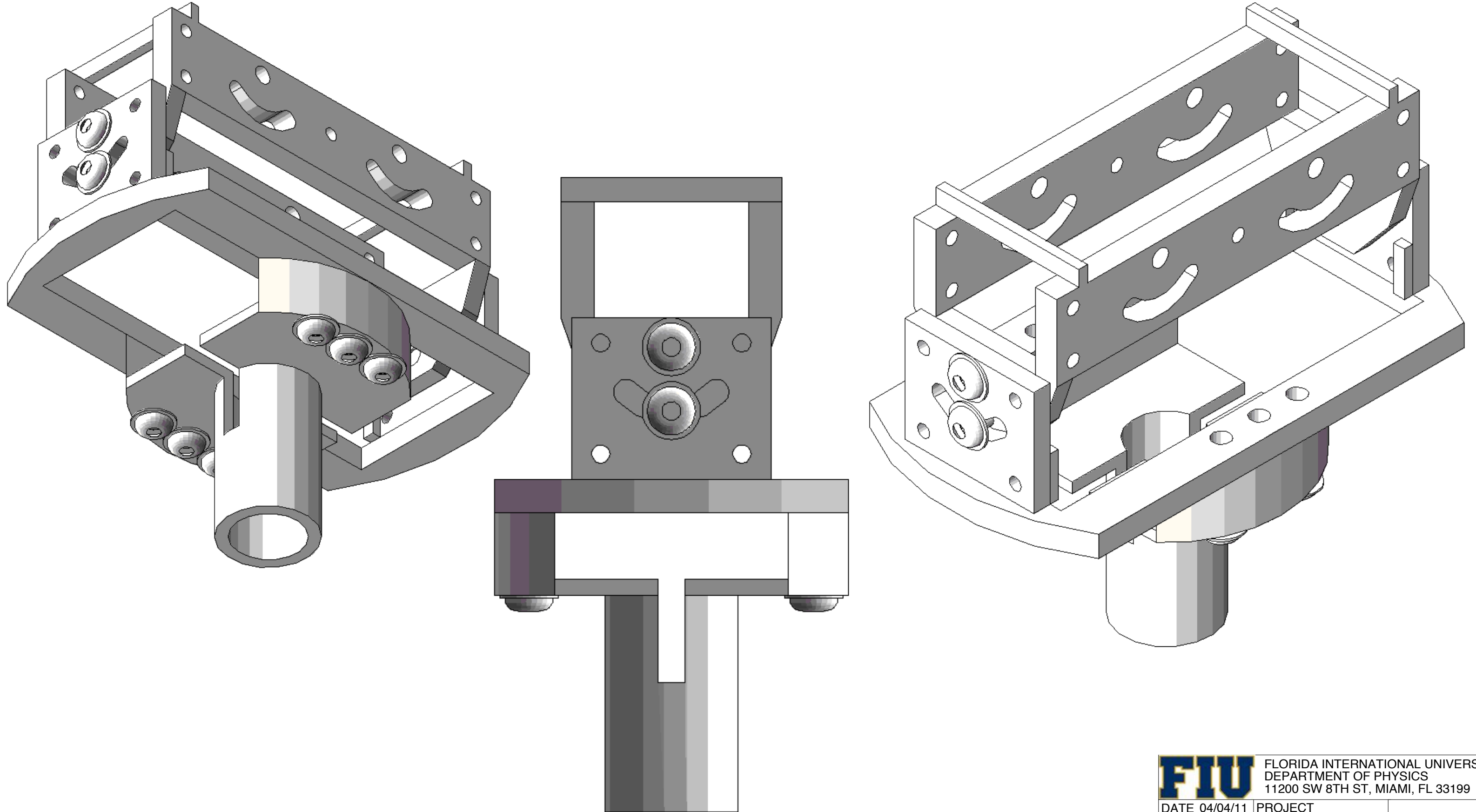
NOTES.

1. ONLY MATERIAL TO BE USED IS STAINLESS STEEL 316.
2. PPPL WILL SILVER PLATE ALL SCREWS.

VECTORWORKS EDUCATIONAL VERSION

REVISION HISTORY

REV	DESCRIPTION	DATE	APPROVED



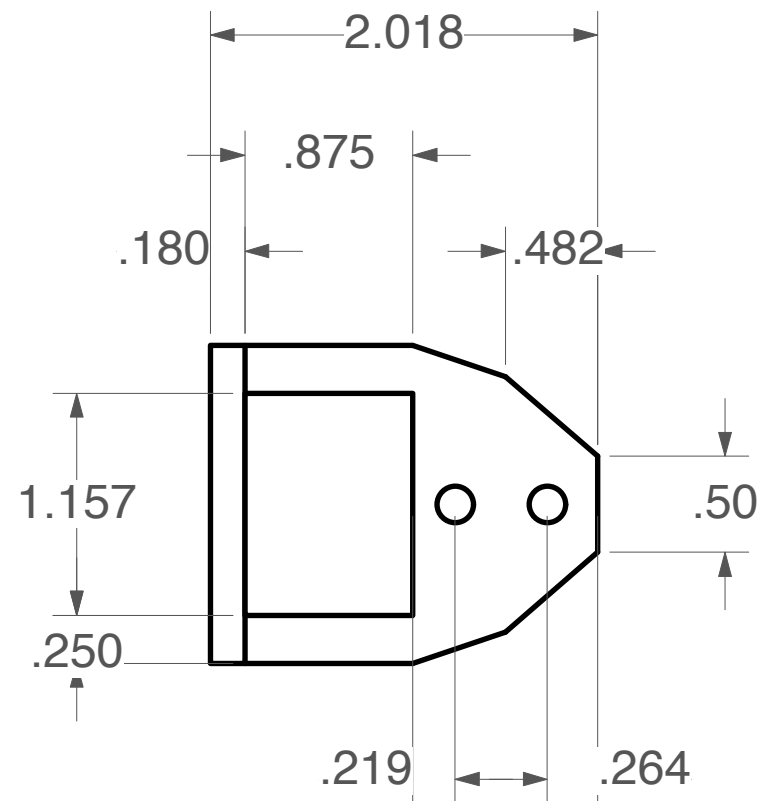
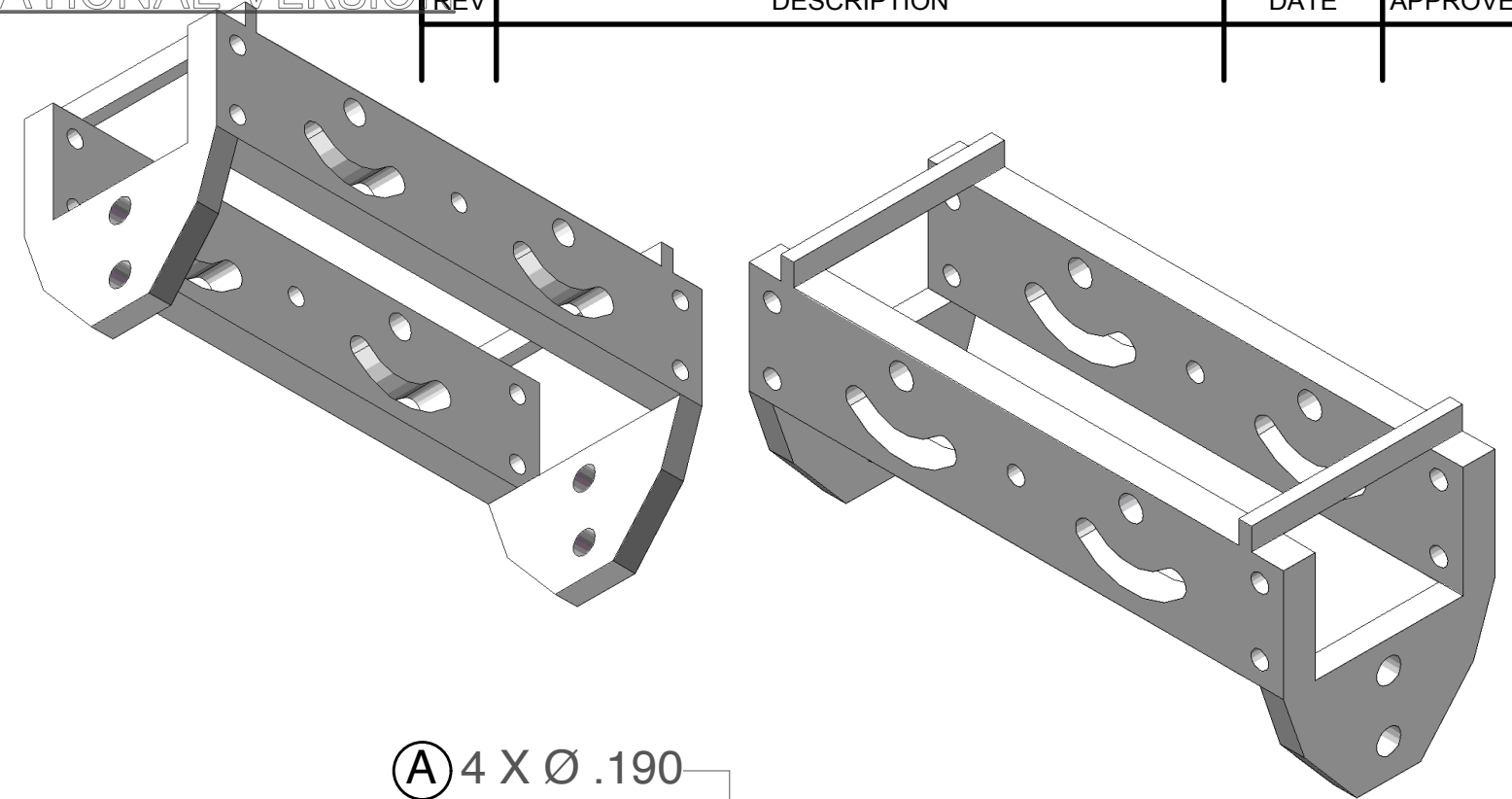
VECTORWORKS EDUCATIONAL VERSION

FIU	FLORIDA INTERNATIONAL UNIVERSITY DEPARTMENT OF PHYSICS 11200 SW 8TH ST, MIAMI, FL 33199		
	DATE 04/04/11	PROJECT	SHEET 1 OF 1
SCALE	DIAGNOSTIC DESIGN		
TITLE	ASSEMBLED MOUNTS	DRAWN BY RAMONA VALENZUELA PEREZ	

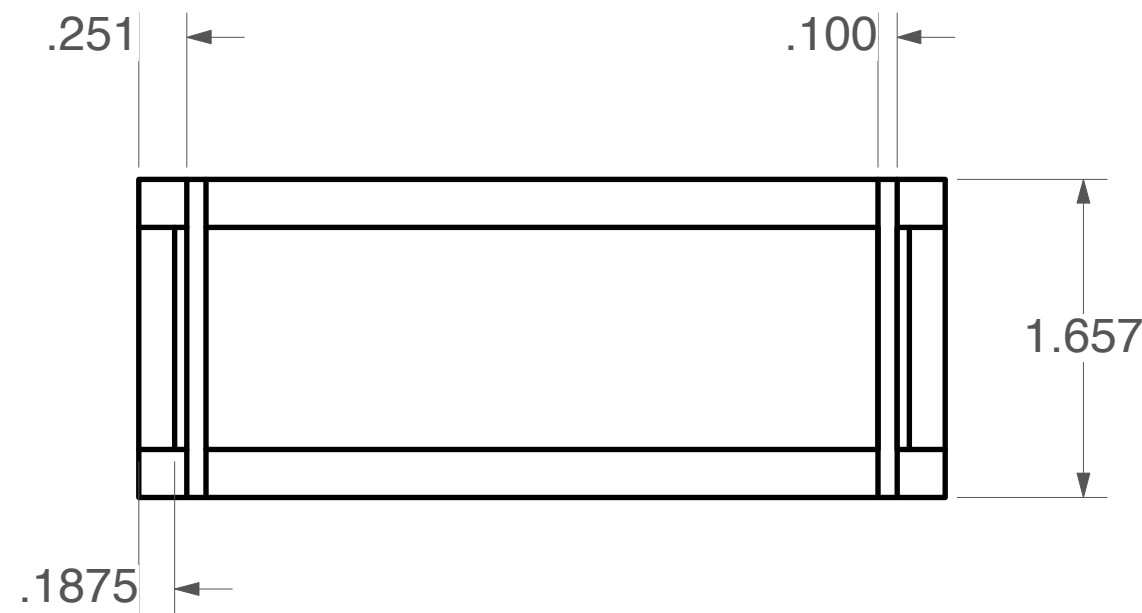
REV	DESCRIPTION	DATE	APPROVED

NOTES.

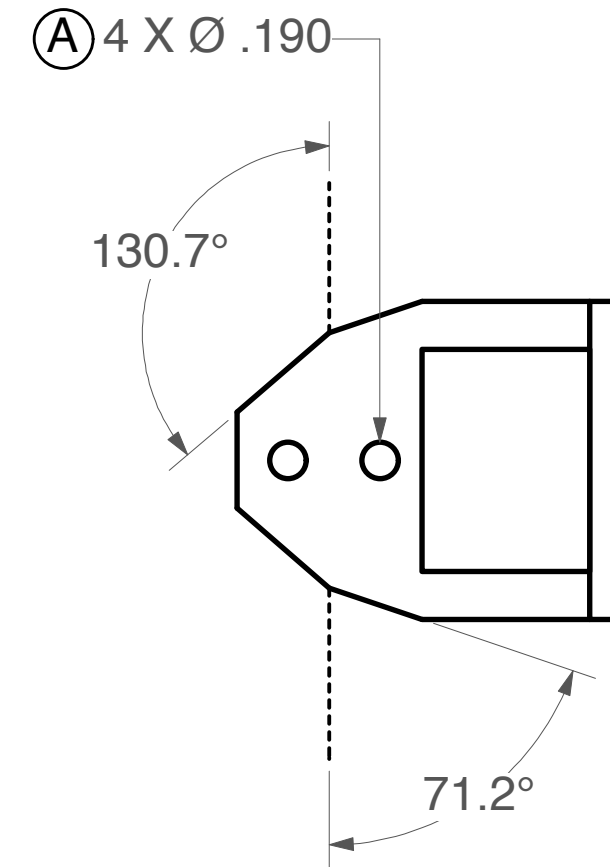
1. MOUNT PIECE 1 IS MADE TO FIT TO MOUNT PIECE 2 AND THE MODULE; CORRESPONDING HOLES SHOULD ALIGN.
3. (A) TAP THRU FOR A 10-32 .190 INCH DIAMETER BUTTON HEAD SOCKET CAP SCREW.



BACK VIEW



TOP VIEW



FRONT VIEW

ALL DIMENSIONS ARE IN INCHES.
TOLERANCES UNLESS OTHERWISE SPECIFIED:
X.X +/- .03
X.XX +/- .01
X.XXX +/- .005



FLORIDA INTERNATIONAL UNIVERSITY
DEPARTMENT OF PHYSICS
11200 SW 8TH ST, MIAMI, FL 33199

DATE 04/04/11	PROJECT DIAGNOSTIC DESIGN	SHEET 1 OF 2
SCALE 1:1	TITLE MOUNT PIECE 1	DRAWN BY RAMONA VALENZUELA PEREZ

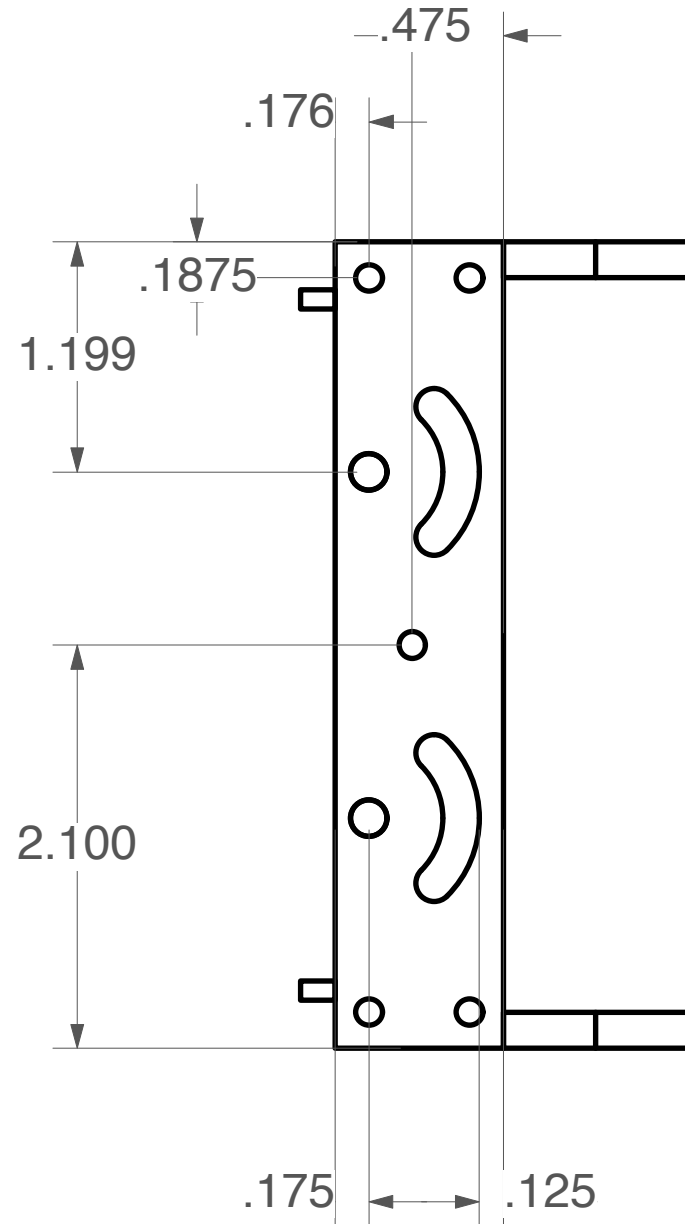
NOTES.

1. MOUNT PIECE 1 IS MADE TO FIT TO MOUNT PIECE 2 AND THE MODULE; CORRESPONDING HOLES SHOULD ALIGN.
2. (A) CREATE ARC ANGLE WITH A 10-32 .190 INCH DIAMETER MACHINE SCREW.
3. (B) TAP THRU FOR A 6-32 .138 INCH DIAMETER BUTTON HEAD SOCKET CAP SCREW.
4. (C) BORE THRU FOR A 10-32 .190 INCH DIAMETER BUTTON HEAD SOCKET CAP SCREW.

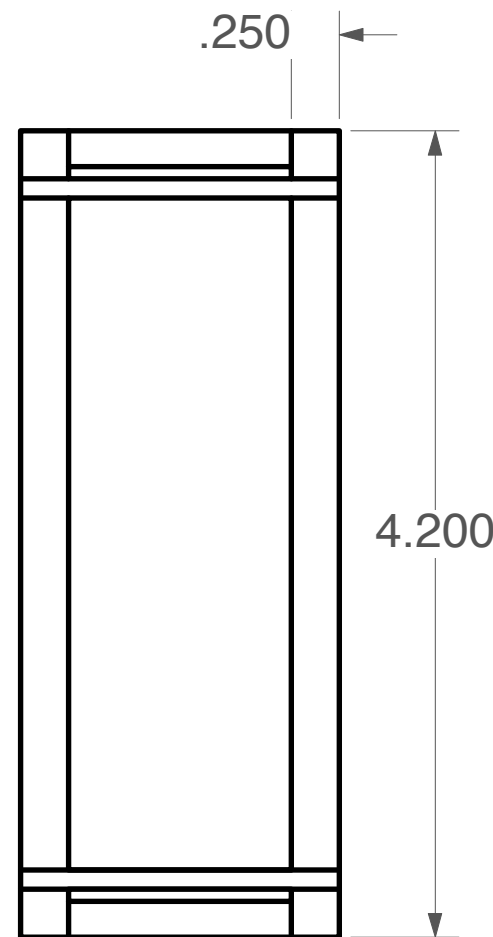
VECTORWORKS EDUCATIONAL VERSION

REVISION HISTORY

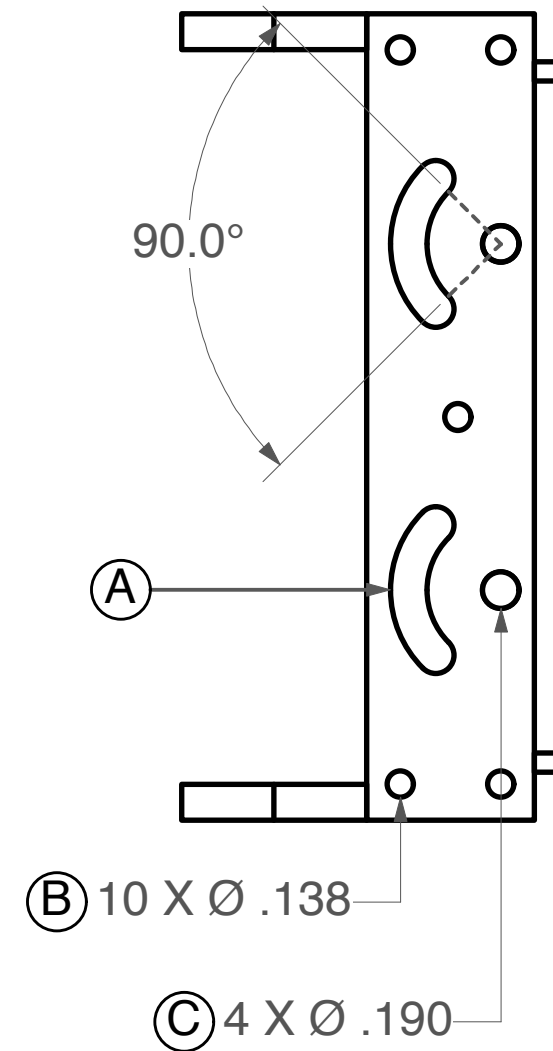
REV	DESCRIPTION	DATE	APPROVED



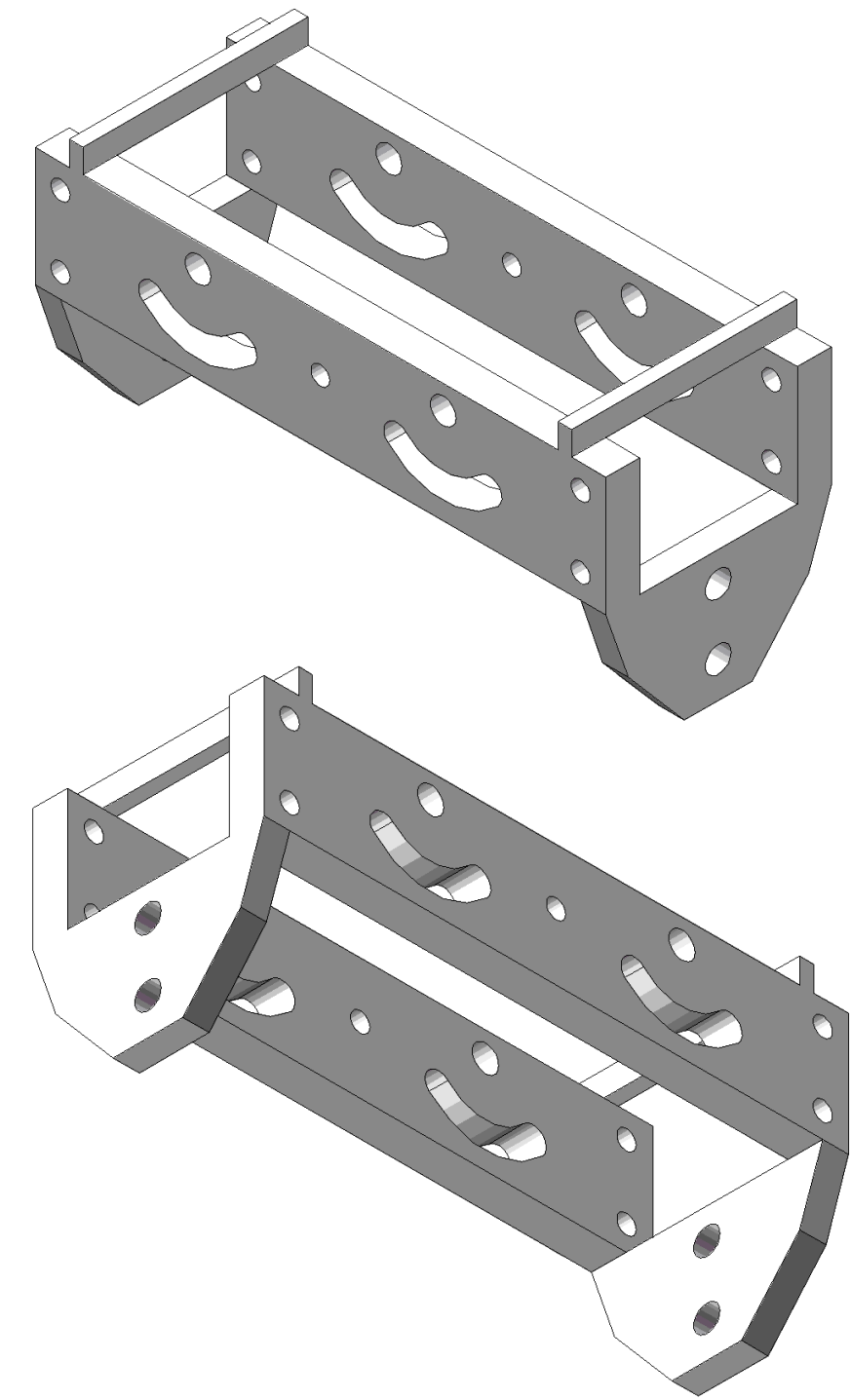
SIDE VIEW



TOP VIEW



SIDE VIEW



ALL DIMENSIONS ARE IN INCHES.
TOLERANCES UNLESS OTHERWISE SPECIFIED:

X.X	+/- .03	∠ +/- .5°
X.XX	+/- .01	
X.XXX	+/- .005	

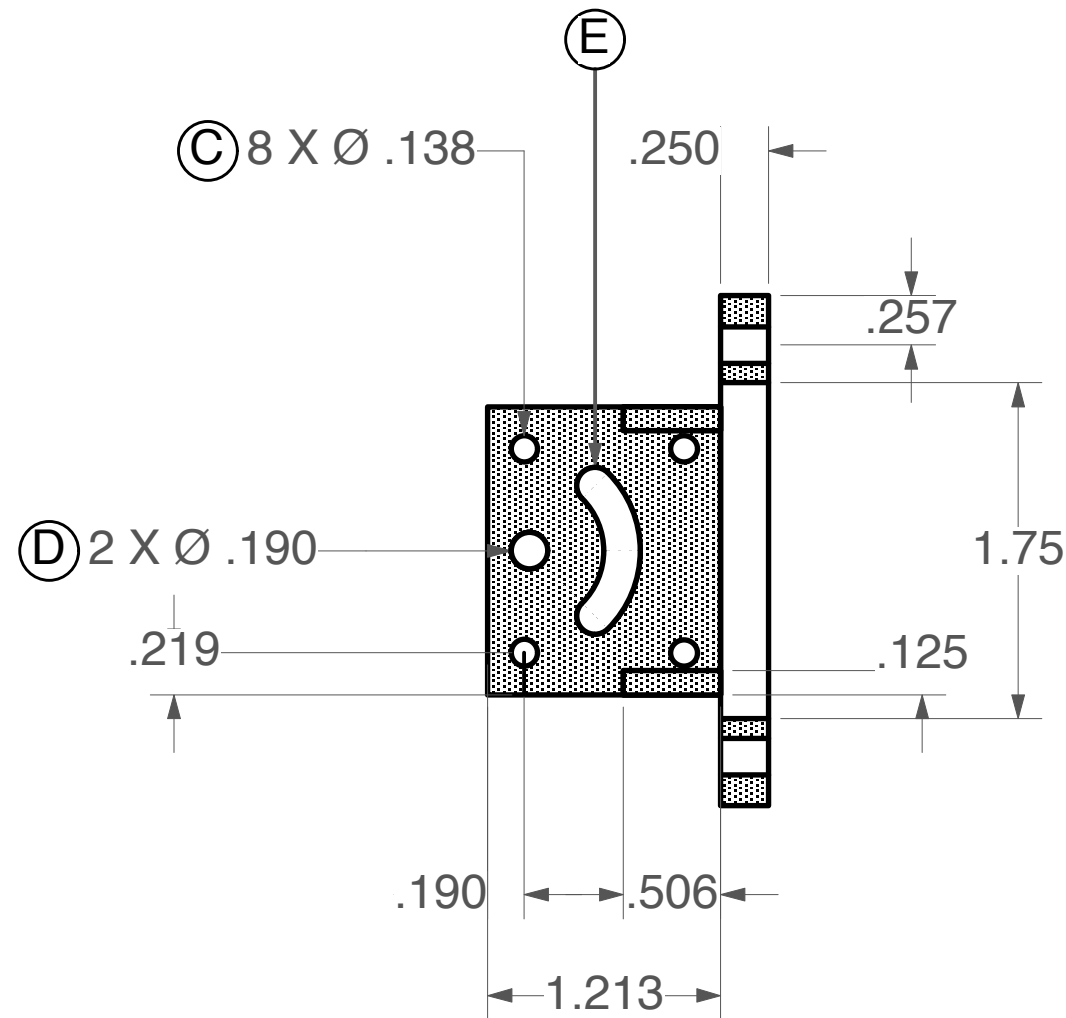
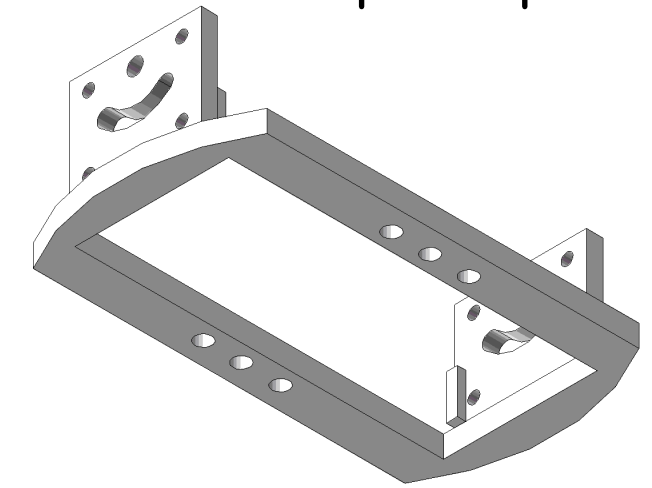
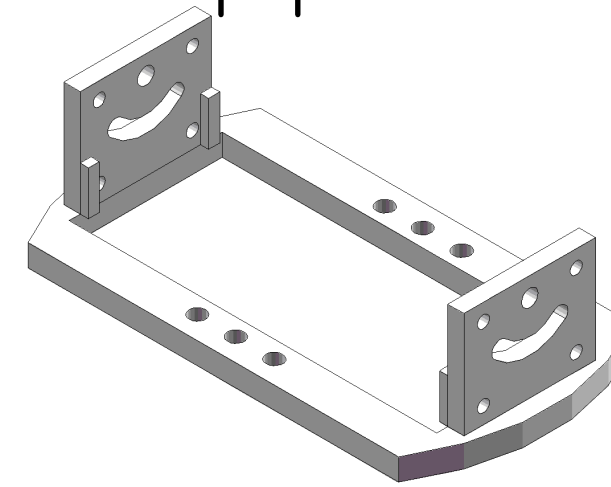
FIU	FLORIDA INTERNATIONAL UNIVERSITY DEPARTMENT OF PHYSICS 11200 SW 8TH ST, MIAMI, FL 33199		
	DATE 04/04/11	PROJECT DIAGNOSTIC DESIGN	SHEET 2 OF 2
SCALE 1:1	TITLE MOUNT PIECE 1	DRAWN BY RAMONA VALENZUELA PEREZ	

VECTORWORKS EDUCATIONAL VERSION

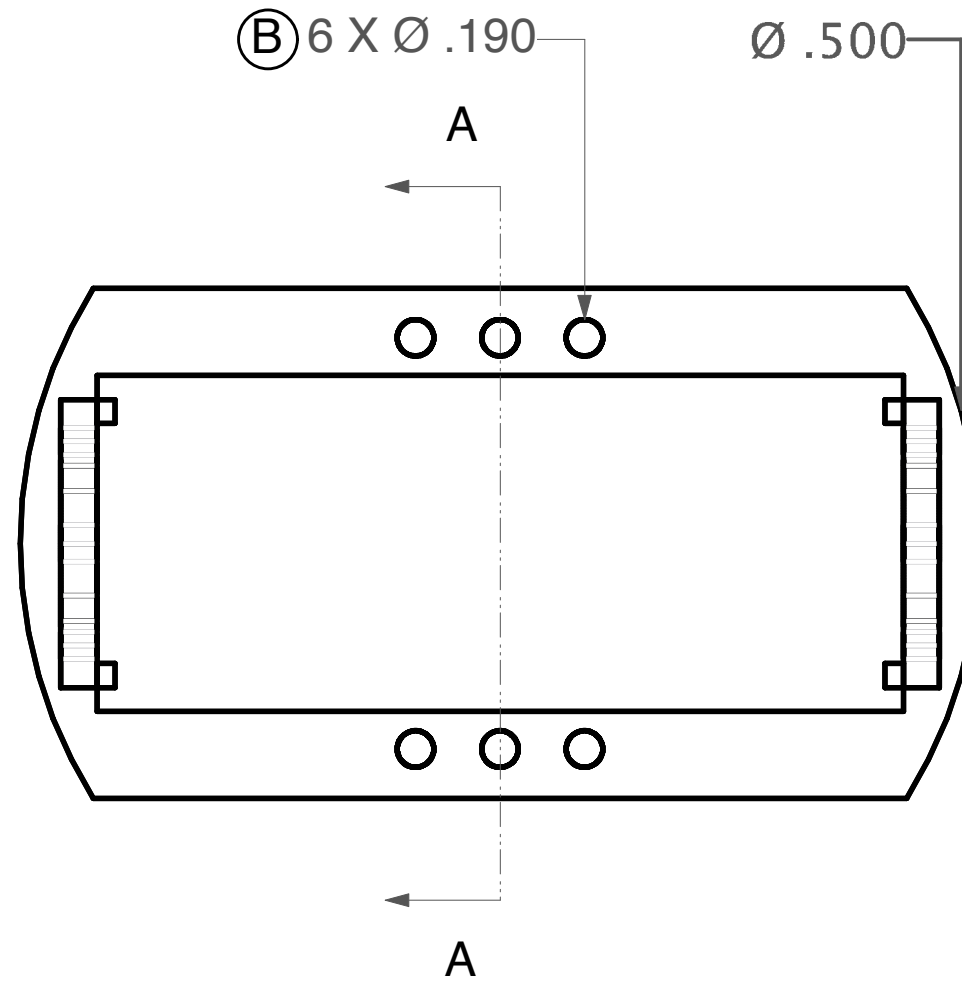
REV	DESCRIPTION	DATE	APPROVED

NOTES.

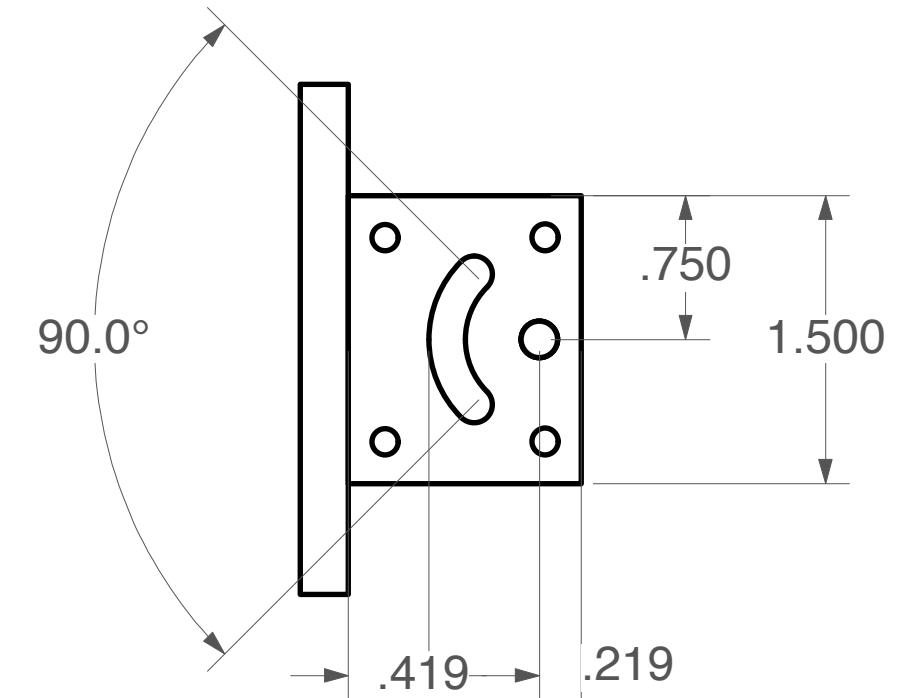
1. MOUNT PIECE 2 IS MADE TO FIT TO MOUNT PIECE 1 AND MOUNT PIECE 3; CORRESPONDING HOLES SHOULD ALIGN.
2. (B) TAP THRU FOR A 10-32 .190 INCH DIAMETER BUTTON HEAD SOCKET CAP SCREW.
3. (C) TAP THRU FOR A 6-32 .138 INCH DIAMETER BUTTON HEAD SOCKET CAP SCREW.
4. (D) BORE THRU FOR A 10-32 .190 INCH DIAMETER BUTTON HEAD SOCKET CAP SCREW.
5. (E) CREATE ARC ANGLE WITH A 10-32 .190 INCH DIAMETER MACHINE SCREW.



A SECTIONAL VIEW A



TOP VIEW



FRONT VIEW

ALL DIMENSIONS ARE IN INCHES.
TOLERANCES UNLESS OTHERWISE SPECIFIED:
X.X +/- .03
X.XX +/- .01
X.XXX +/- .005



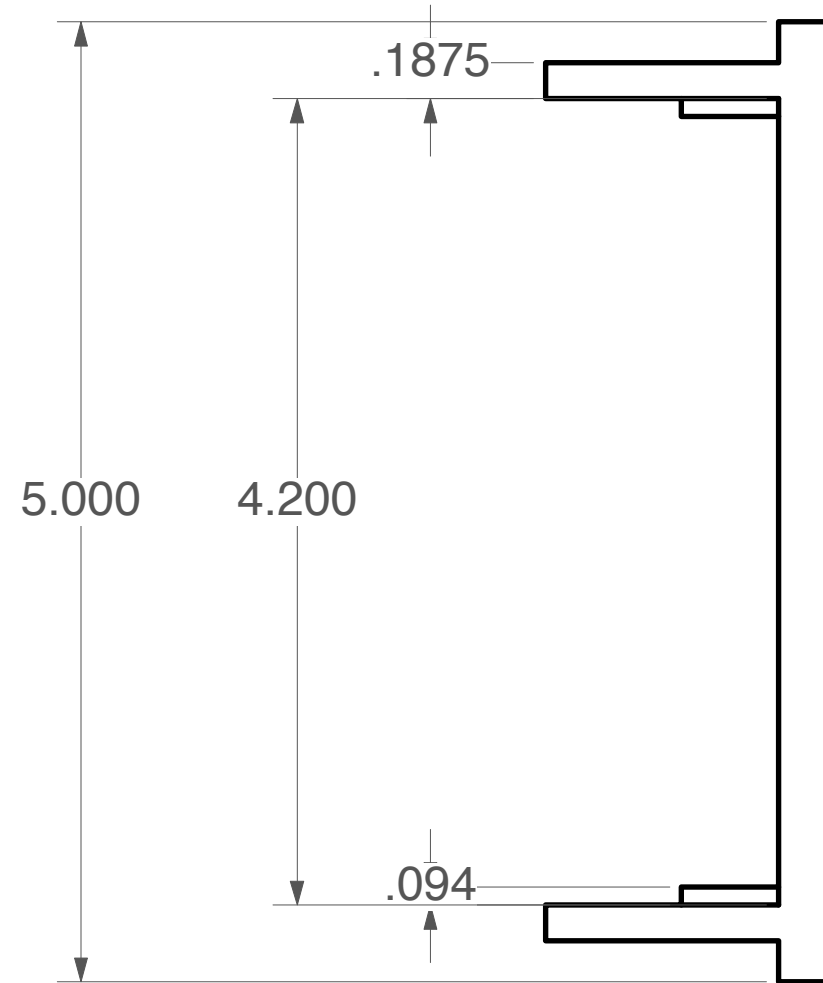
FLORIDA INTERNATIONAL UNIVERSITY
DEPARTMENT OF PHYSICS
11200 SW 8TH ST, MIAMI, FL 33199

DATE 04/04/11	PROJECT DIAGNOSTIC DESIGN	SHEET 1 OF 2
SCALE 1:1	TITLE MOUNT PIECE 2	DRAWN BY RAMONA VALENZUELA PEREZ

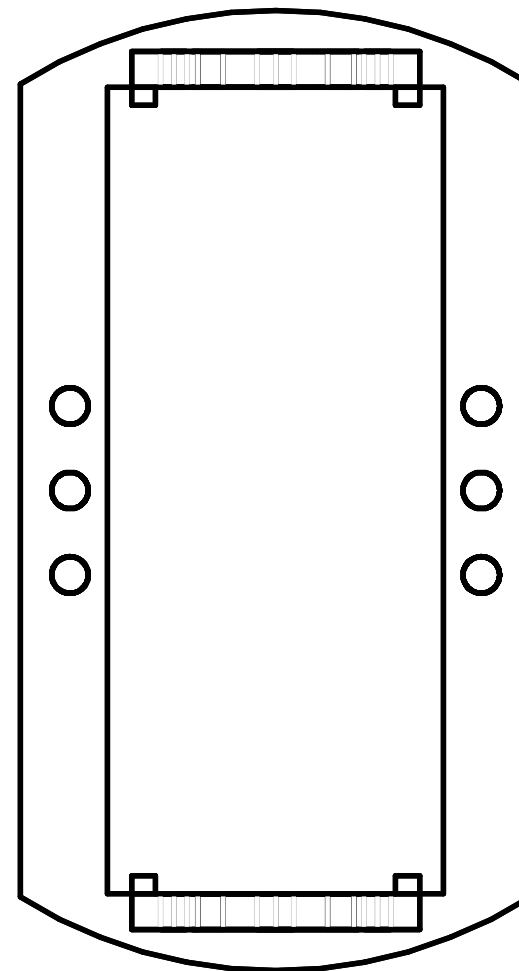
NOTES.

1. MOUNT PIECE 2 IS MADE TO FIT TO MOUNT PIECE 1 AND MOUNT PIECE 3; CORRESPONDING HOLES SHOULD ALIGN.

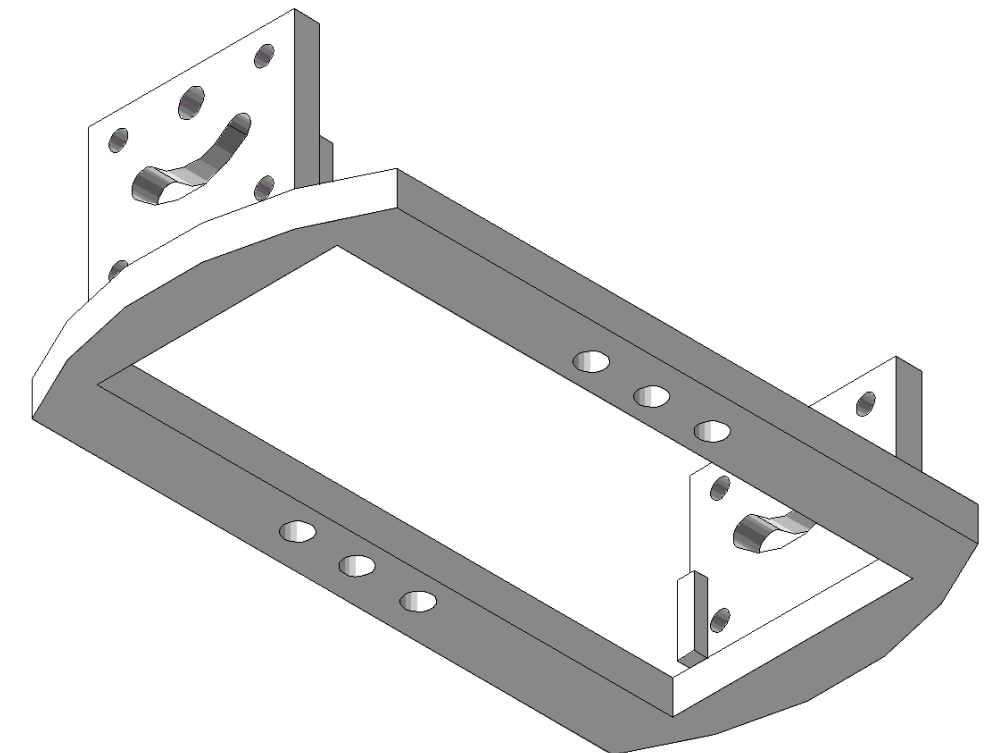
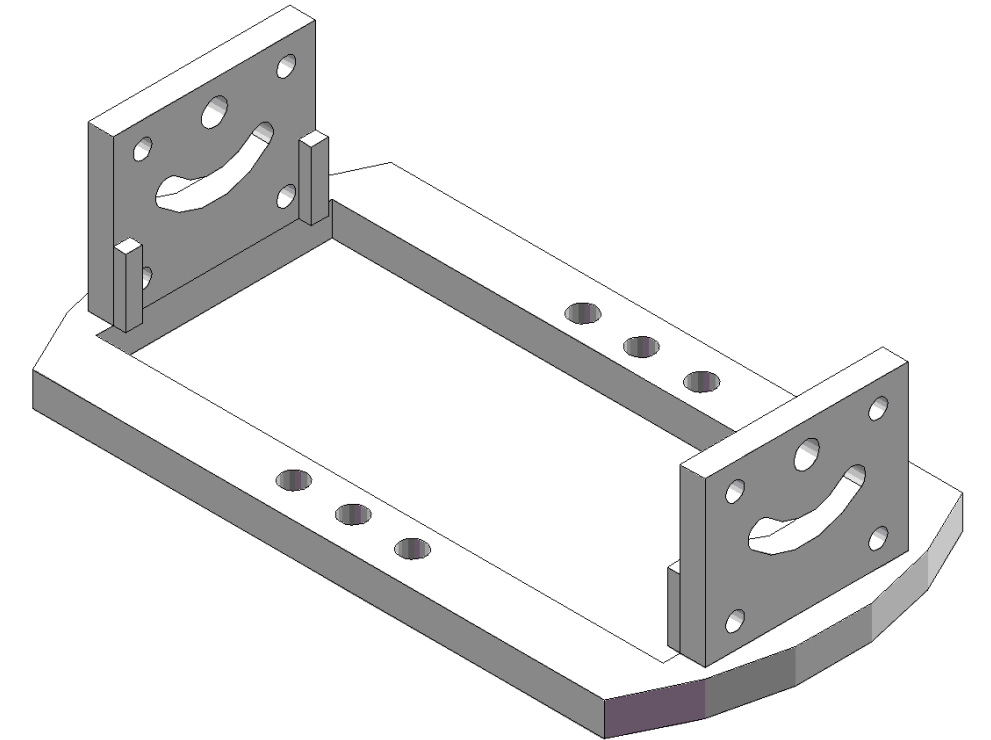
REV	DESCRIPTION	DATE	APPROVED



SIDE VIEW



TOP VIEW



ALL DIMENSIONS ARE IN INCHES.
 TOLERANCES UNLESS OTHERWISE SPECIFIED:
 X.X +/- .03
 X.XX +/- .01
 X.XXX +/- .005



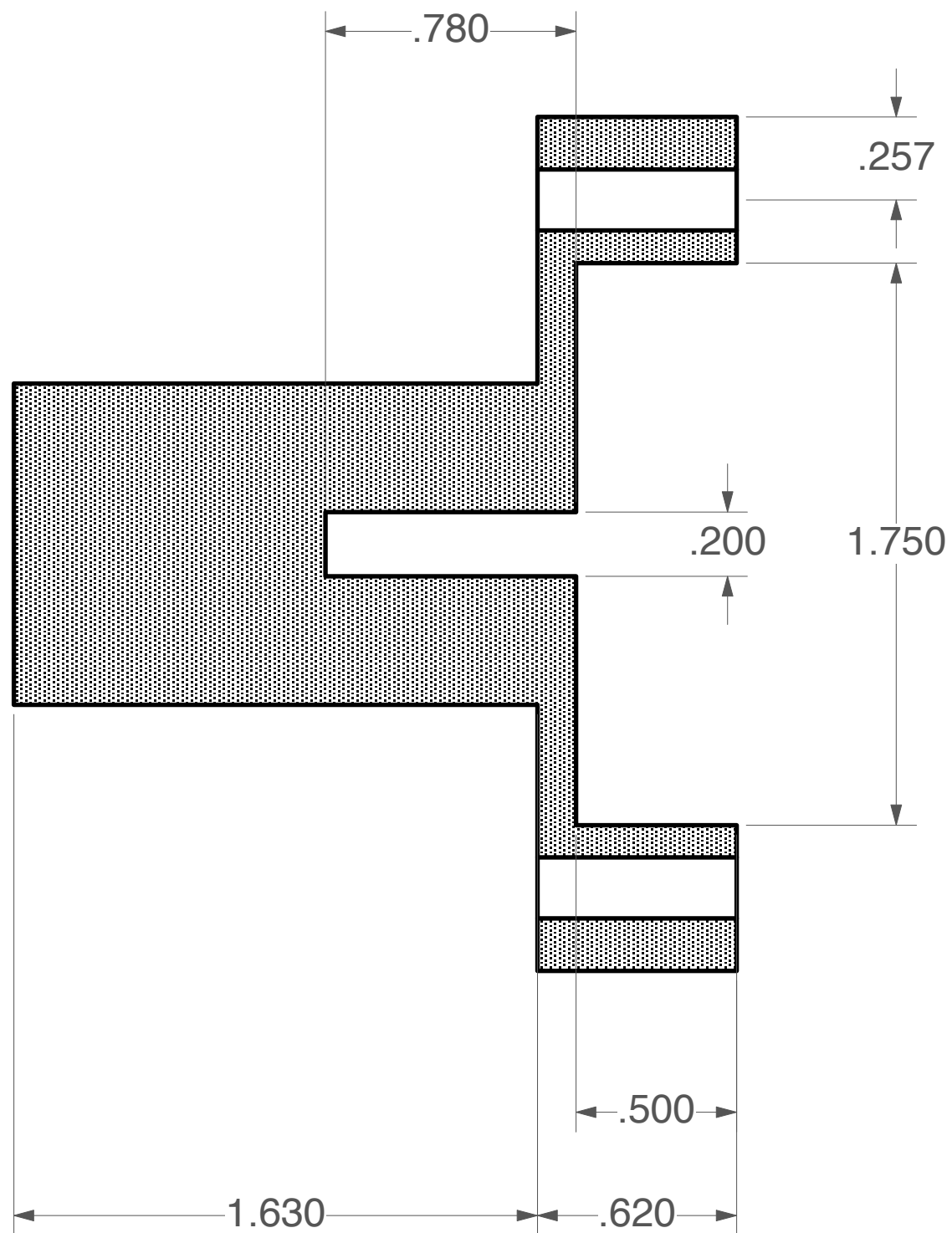
FLORIDA INTERNATIONAL UNIVERSITY
 DEPARTMENT OF PHYSICS
 11200 SW 8TH ST, MIAMI, FL 33199

DATE 04/04/11	PROJECT DIAGNOSTIC DESIGN	SHEET 2 OF 2
SCALE 1:1	TITLE MOUNT PIECE 2	DRAWN BY RAMONA VALENZUELA PEREZ

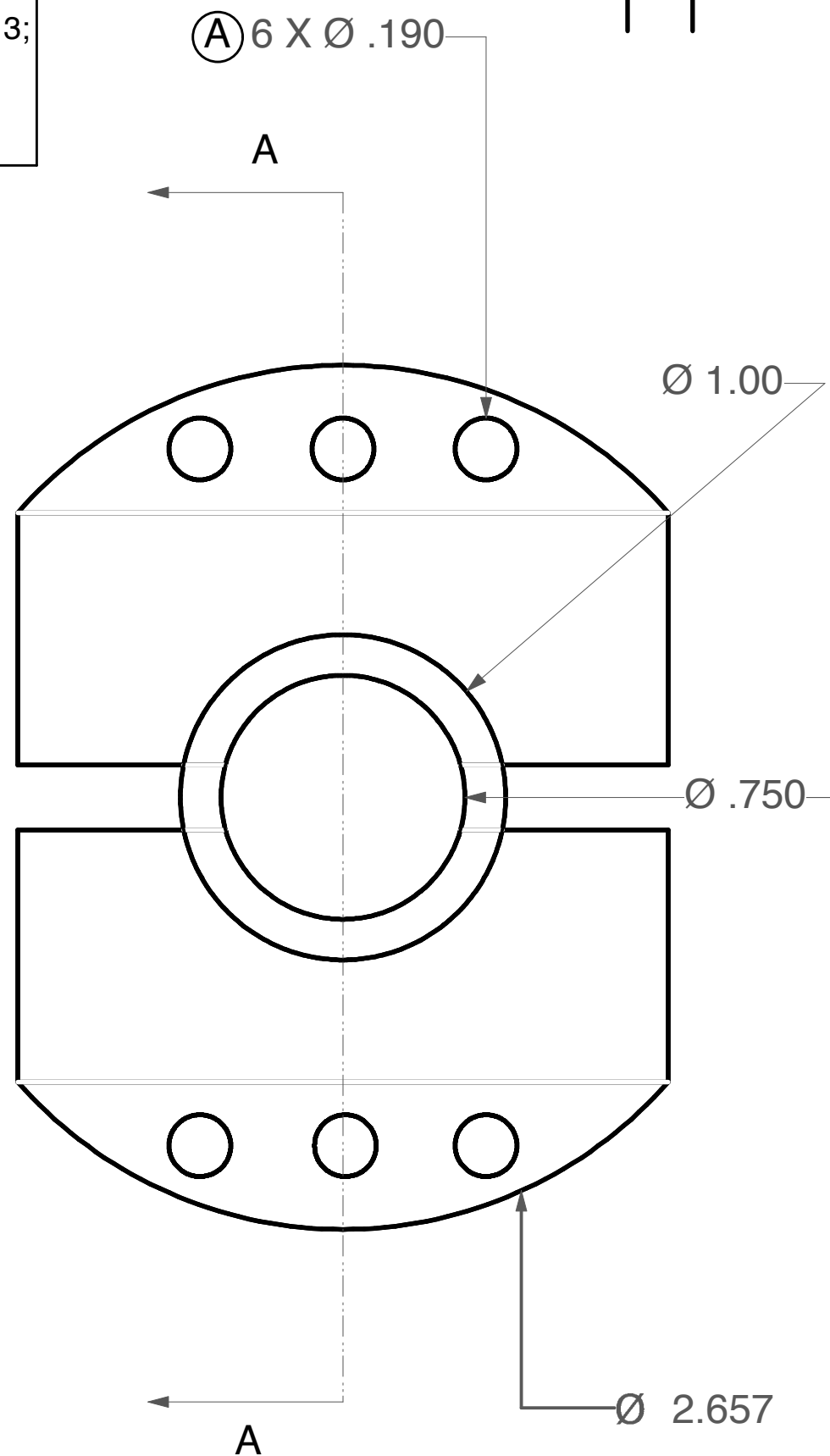
NOTES.

1. MOUNT PIECE 3 MADE TO CONNECT TO BOTTOM OF MOUNT PIECE 3; CORRESPONDING HOLES SHOULD ALIGN.
2. (A) BORE THRU FOR A 10-32 .190 INCH DIAMETER BUTTON HEAD SOCKET CAP SCREW.

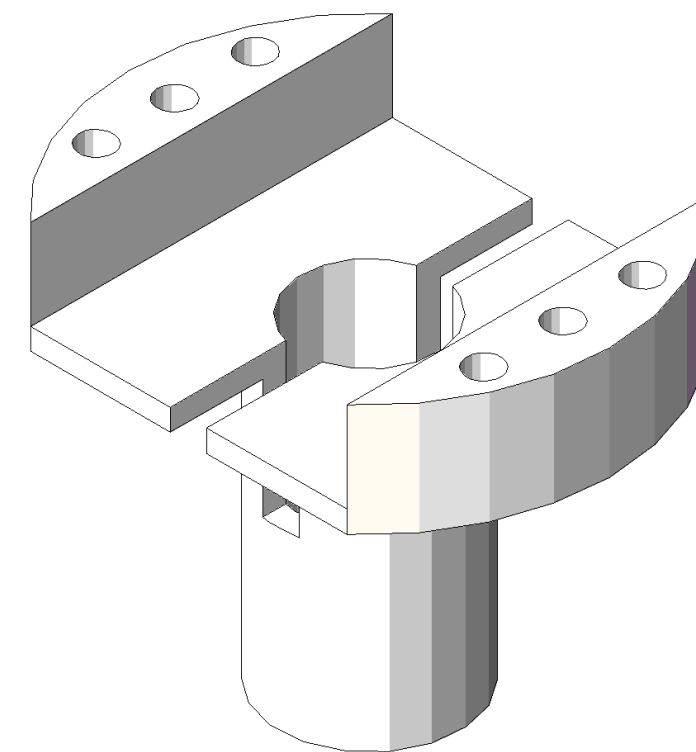
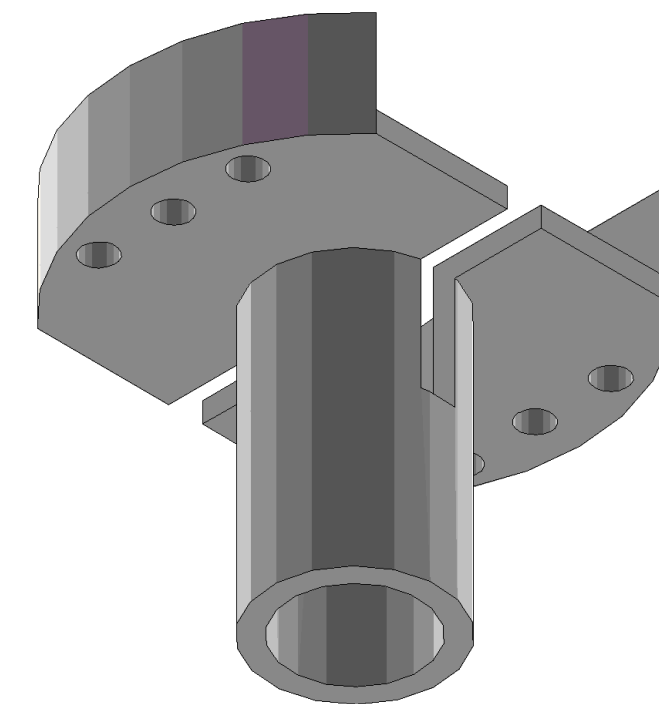
REV	DESCRIPTION	DATE	APPROVED



A SECTIONAL VIEW A



BOTTOM VIEW



ALL DIMENSIONS ARE IN INCHES.
TOLERANCES UNLESS OTHERWISE SPECIFIED:
X.X +/- .03
X.XX +/- .01
X.XXX +/- .005



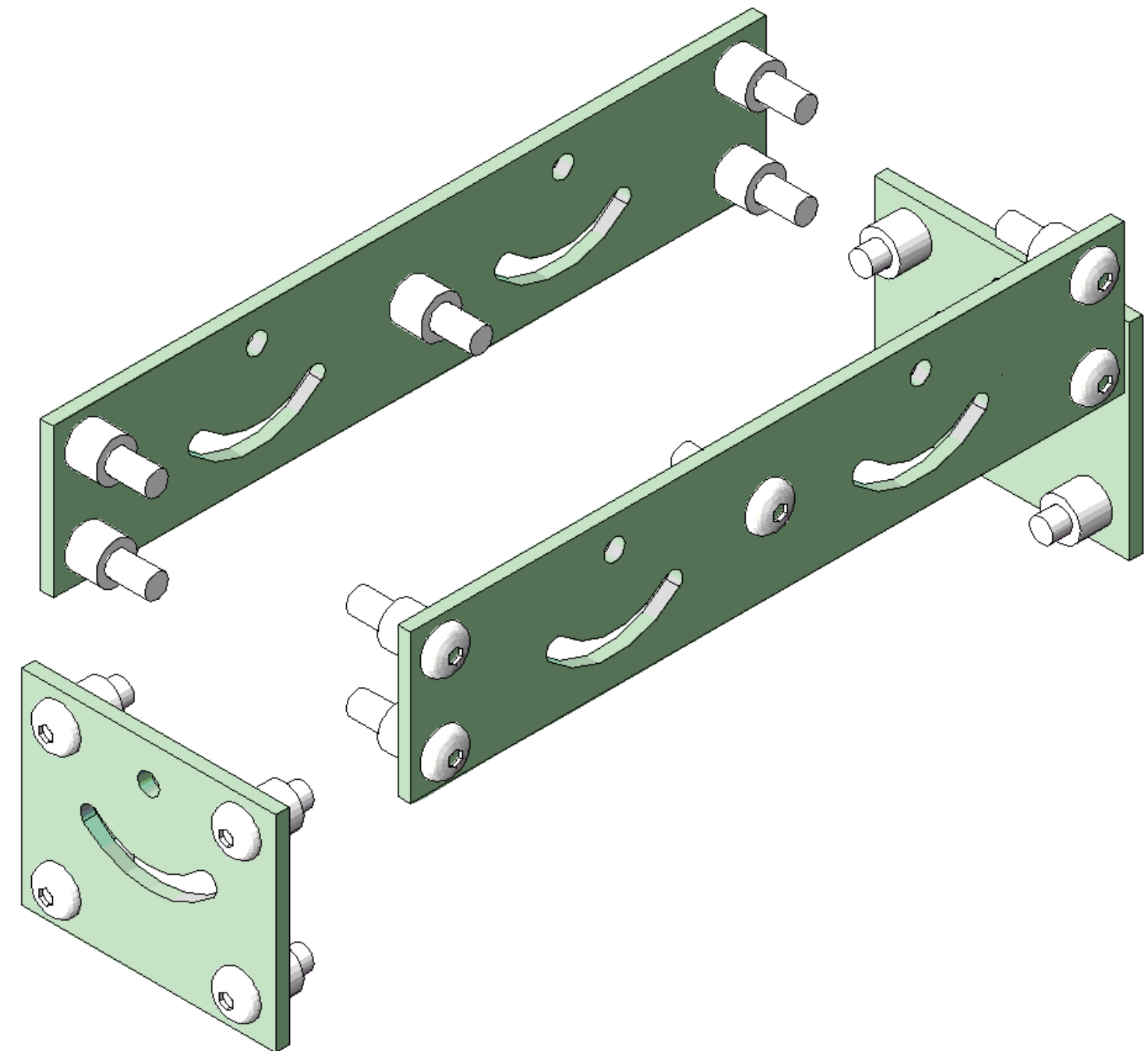
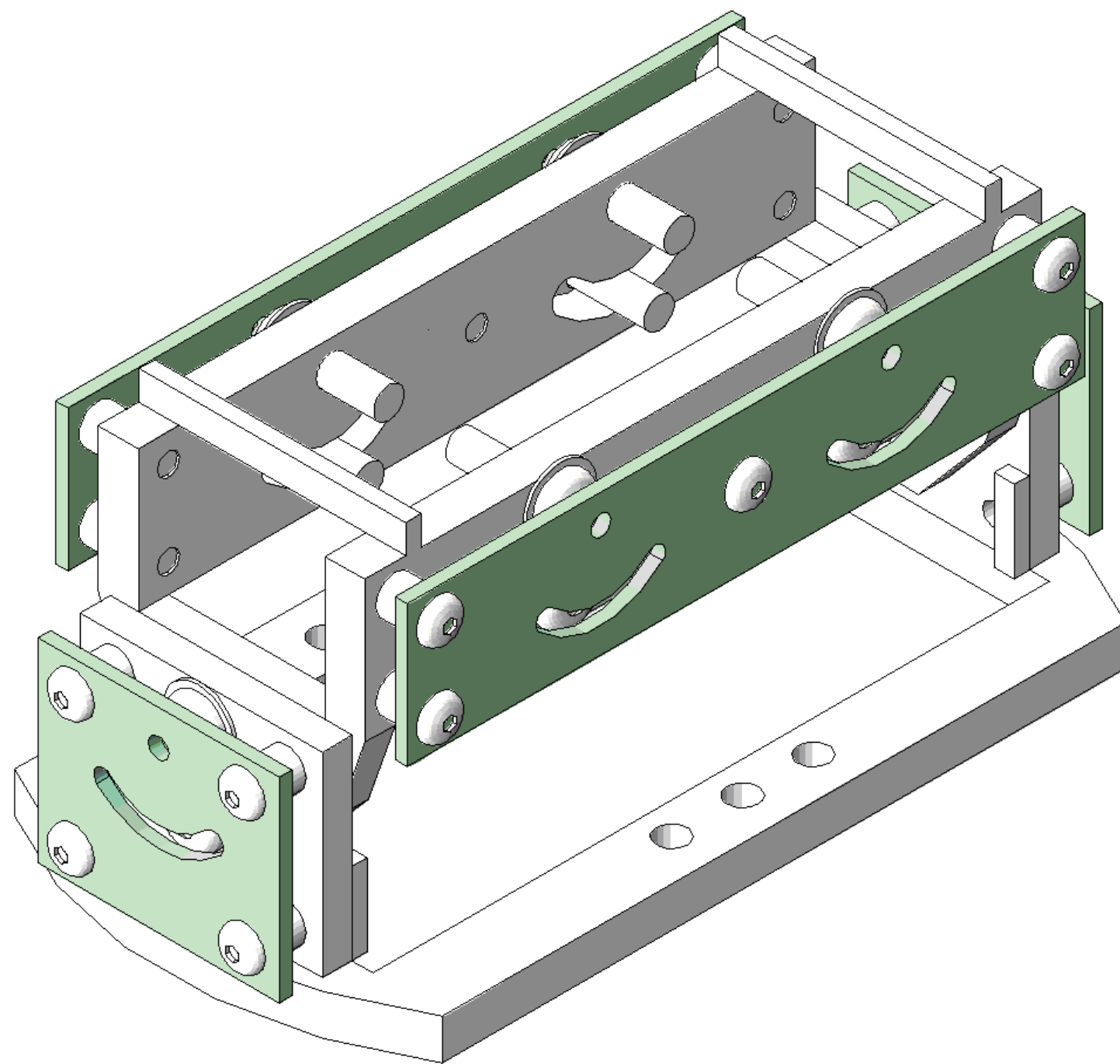
FLORIDA INTERNATIONAL UNIVERSITY
DEPARTMENT OF PHYSICS
11200 SW 8TH ST, MIAMI, FL 33199

DATE 04/04/11	PROJECT DIAGNOSTIC DESIGN	SHEET 1 OF 1
SCALE 2:1	TITLE MOUNT PIECE 3	DRAWN BY RAMONA VALENZUELA PEREZ

NOTES.

- 1. ONLY MATERIAL TO BE USED IS STAINLESS STEEL 316.
- 2. PPPL WILL SILVER PLATE ALL SCREWS.

REV	DESCRIPTION	DATE	APPROVED

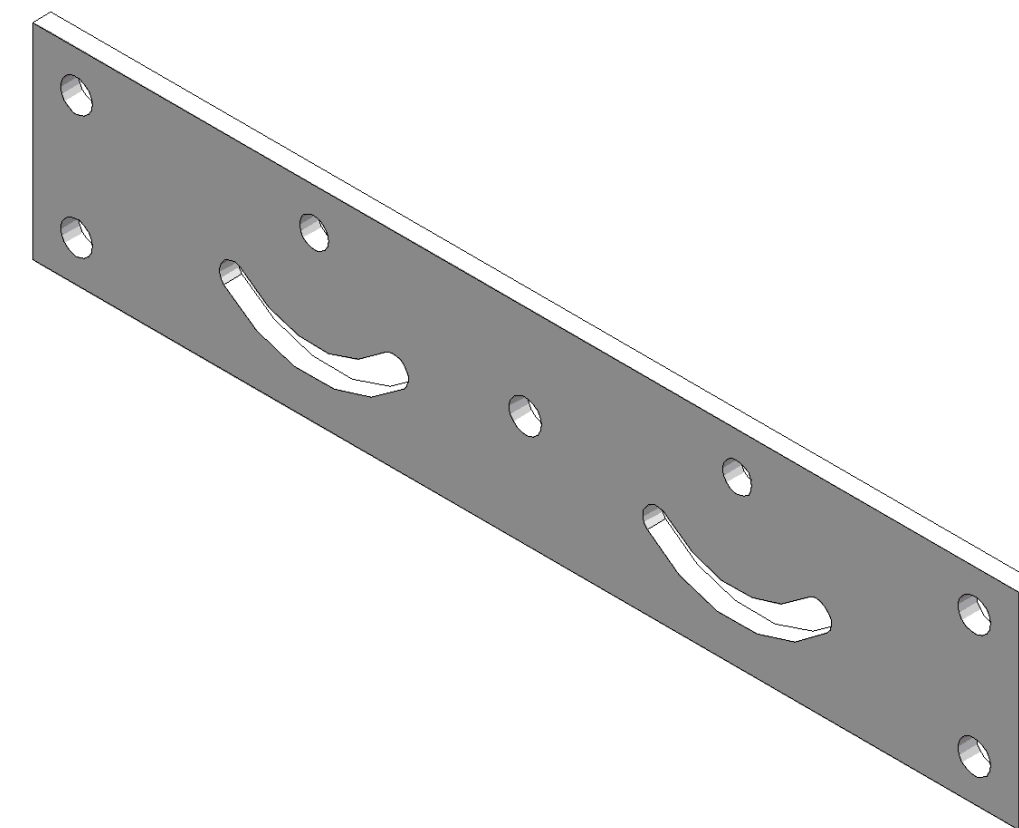
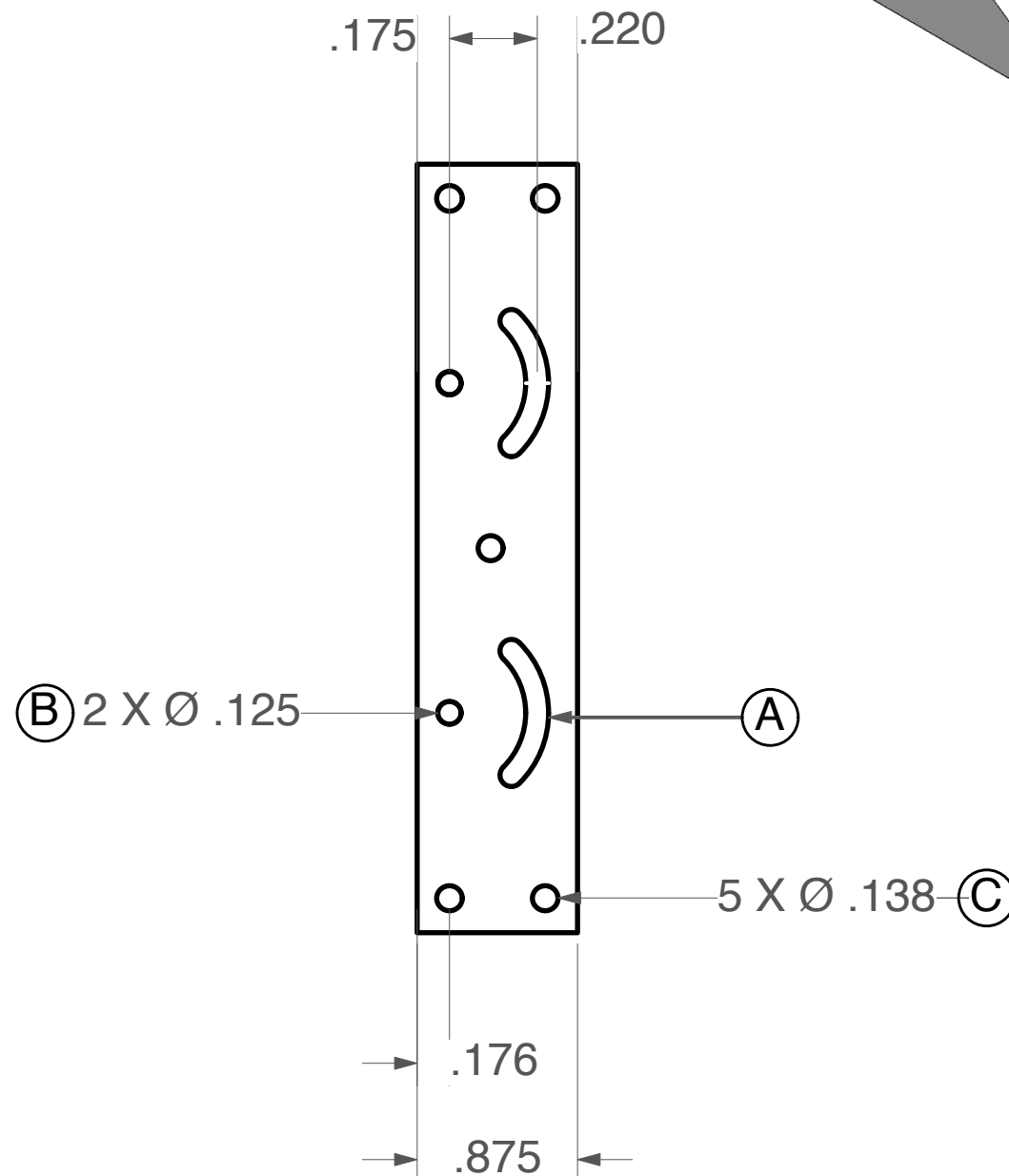
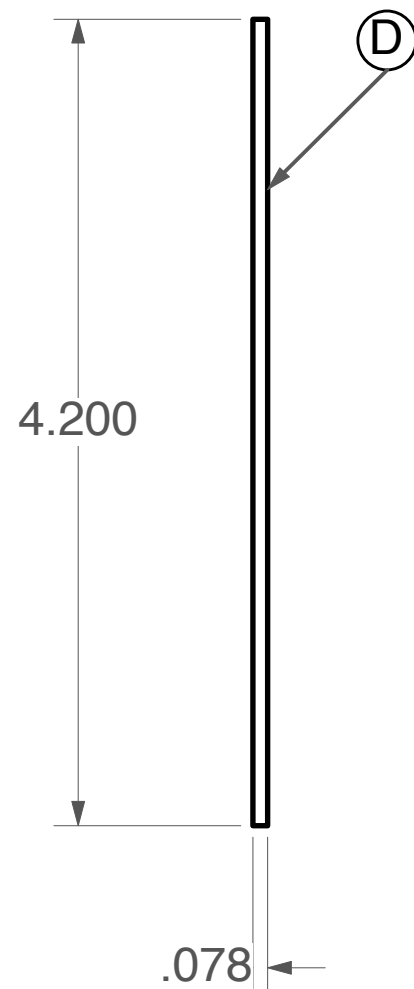
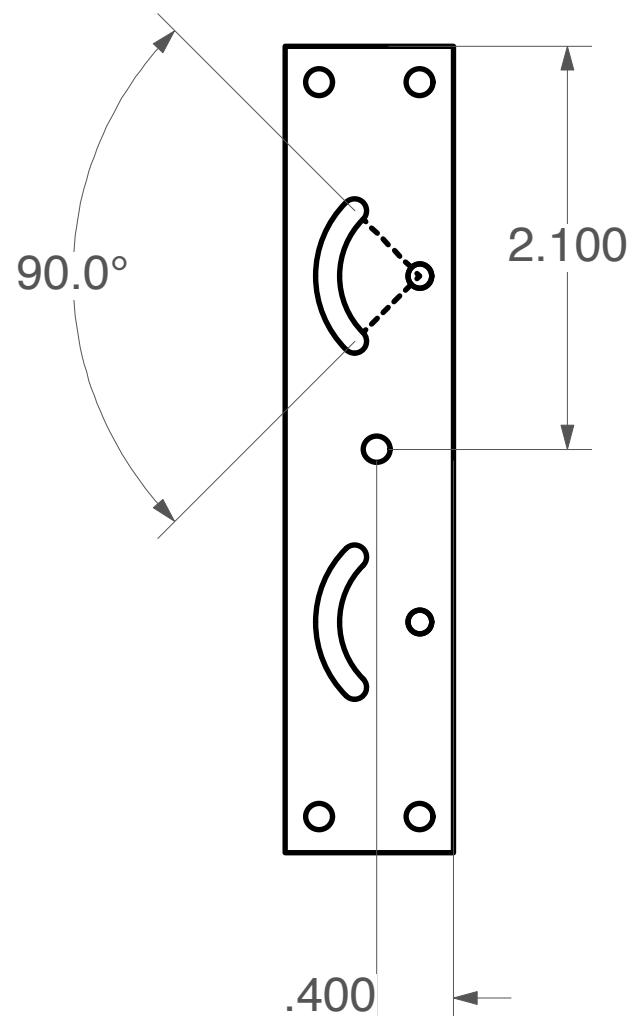


FIU		FLORIDA INTERNATIONAL UNIVERSITY DEPARTMENT OF PHYSICS 11200 SW 8TH ST, MIAMI, FL 33199	
DATE 04/04/11	PROJECT	SHEET 1 OF 1	
SCALE	DIAGNOSTIC DESIGN		
TITLE	ASSEMBLED COVERPLATES	DRAWN BY RAMONA VALENZUELA PEREZ	

REV	DESCRIPTION	DATE	APPROVED

NOTES.

1. COVERPLATE 1 MADE TO FIT OVER MOUNT PIECE 1; CORRESPONDING HOLES SHOULD ALIGN.
2. (A) CREATE ARC ANGLE WITH A 5-40 .125 INCH DIAMETER MACHINE SCREW.
3. (B) BORE THRU A .125 INCH DIAMETER HOLE.
4. (C) BORE THRU FOR A 6-32 .138 INCH DIAMETER BUTTON HEAD SOCKET CAP SCREW.
5. (D) 2 X COVERPLATE 1 NEEDED.



ALL DIMENSIONS ARE IN INCHES.
TOLERANCES UNLESS OTHERWISE SPECIFIED:
X.X +/- .03
X.XX +/- .01
X.XXX +/- .005



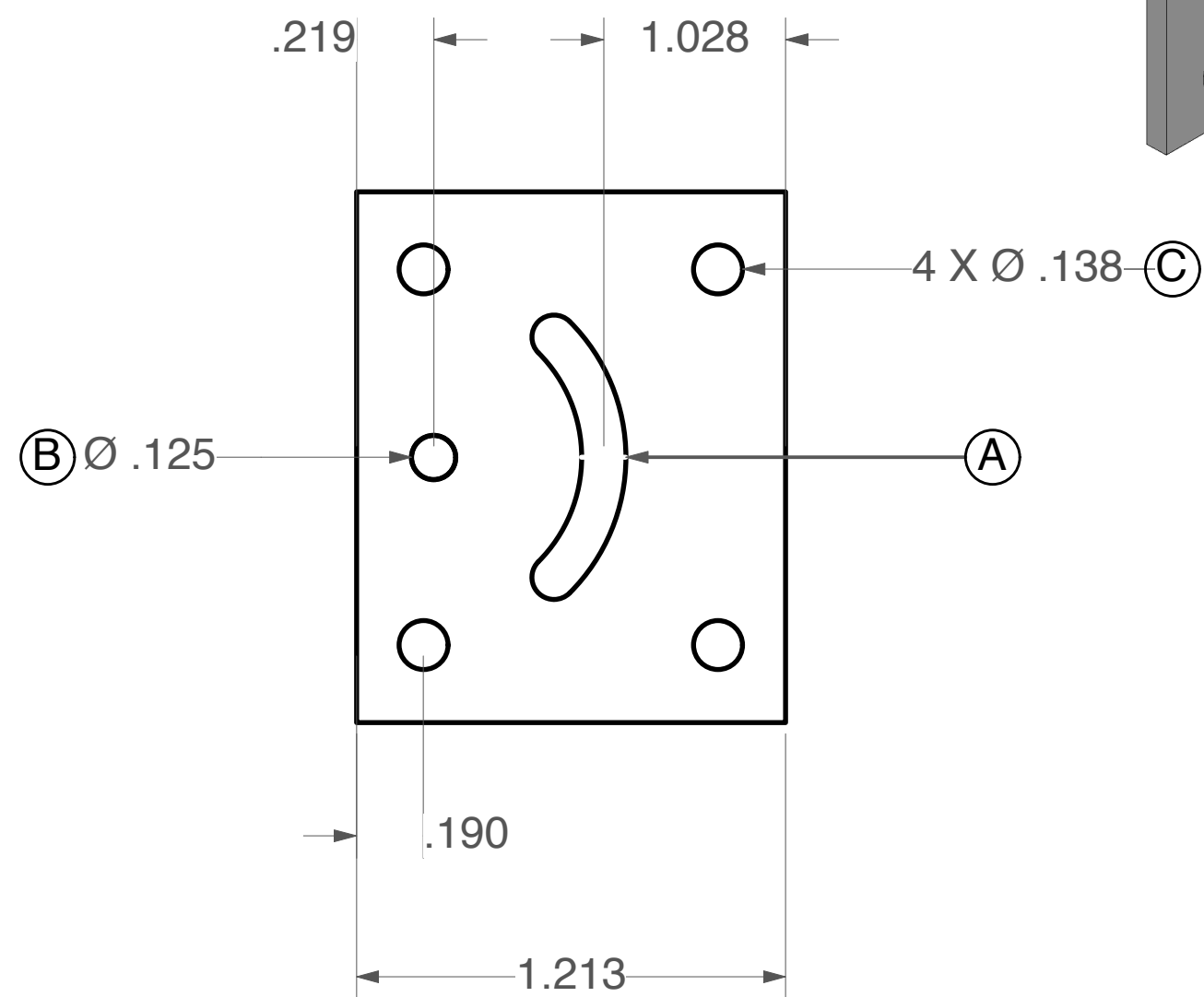
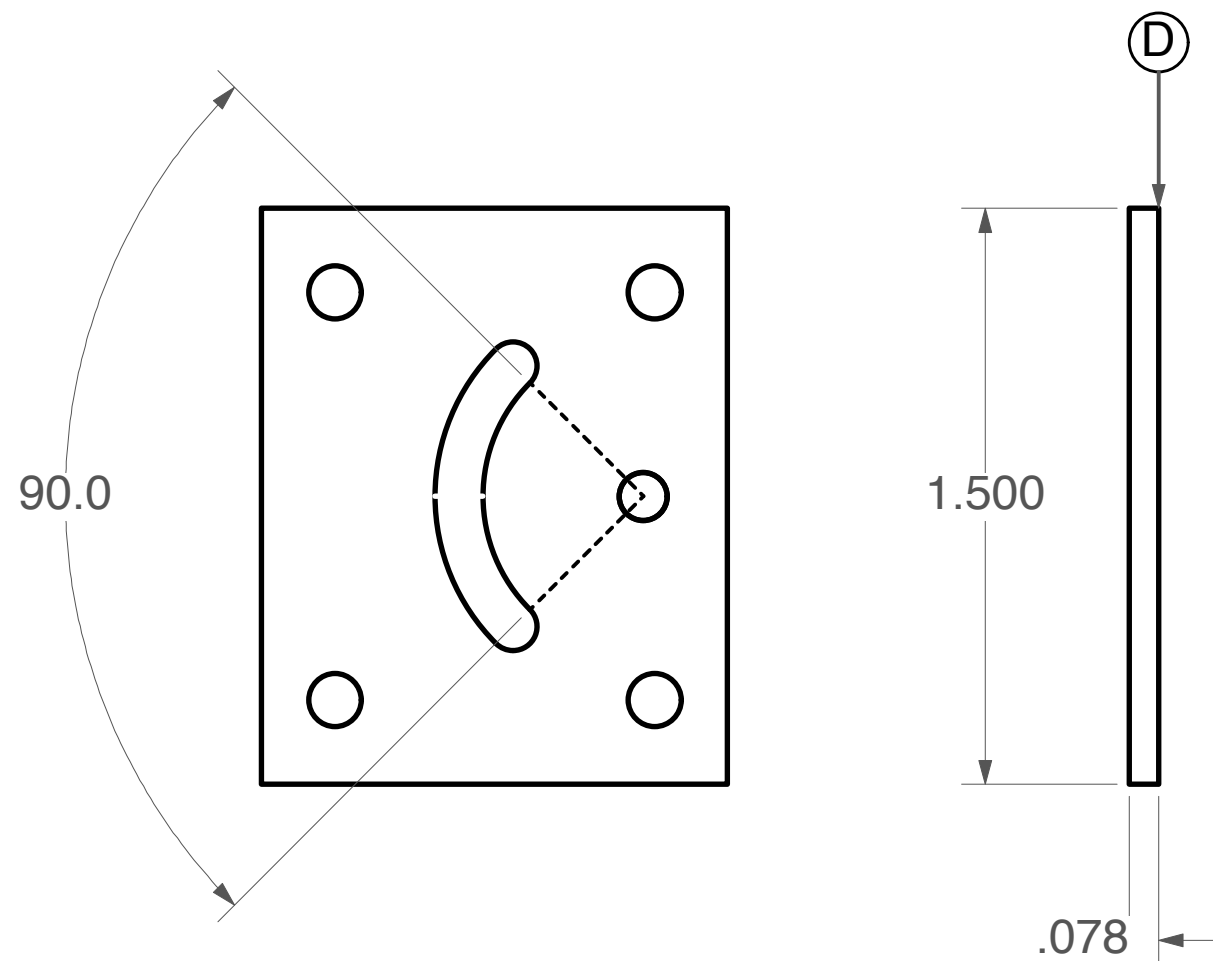
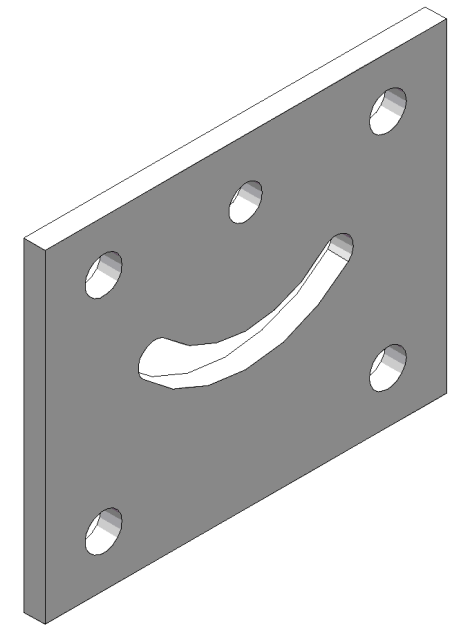
FLORIDA INTERNATIONAL UNIVERSITY
DEPARTMENT OF PHYSICS
11200 SW 8TH ST, MIAMI, FL 33199

DATE 04/04/11	PROJECT DIAGNOSTIC DESIGN	SHEET 1 OF 1
SCALE 1:1	TITLE COVERPLATE 1	DRAWN BY RAMONA VALENZUELA PEREZ

REV	DESCRIPTION	DATE	APPROVED

NOTES.

1. COVERPLATE 2 MADE TO FIT OVER MOUNT PIECE 2; CORRESPONDING HOLES SHOULD ALIGN.
2. (A) CREATE ARC ANGLE WITH A 5-40 .125 INCH DIAMETER MACHINE SCREW.
3. (B) BORE THRU A .125 INCH DIAMETER HOLE.
4. (C) BORE THRU FOR A 6-32 .138 INCH DIAMETER BUTTON HEAD SOCKET CAP SCREW.
5. (D) 2 X COVERPLATE 2 NEEDED.



ALL DIMENSIONS ARE IN INCHES.
 TOLERANCES UNLESS OTHERWISE SPECIFIED:
 X.X +/- .03
 X.XX +/- .01
 X.XXX +/- .005



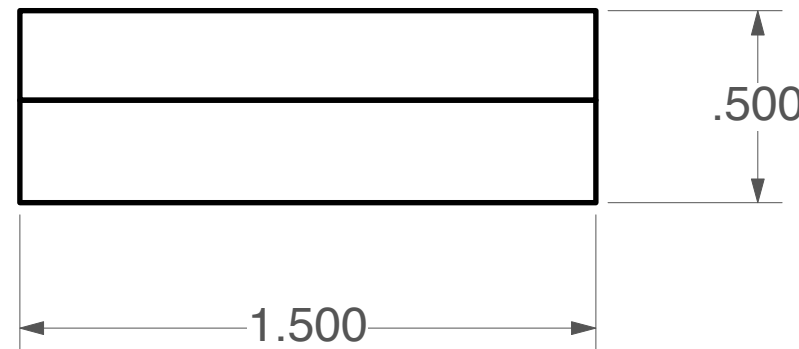
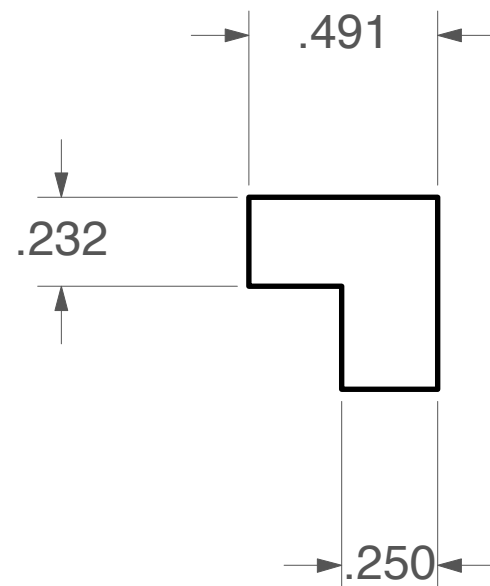
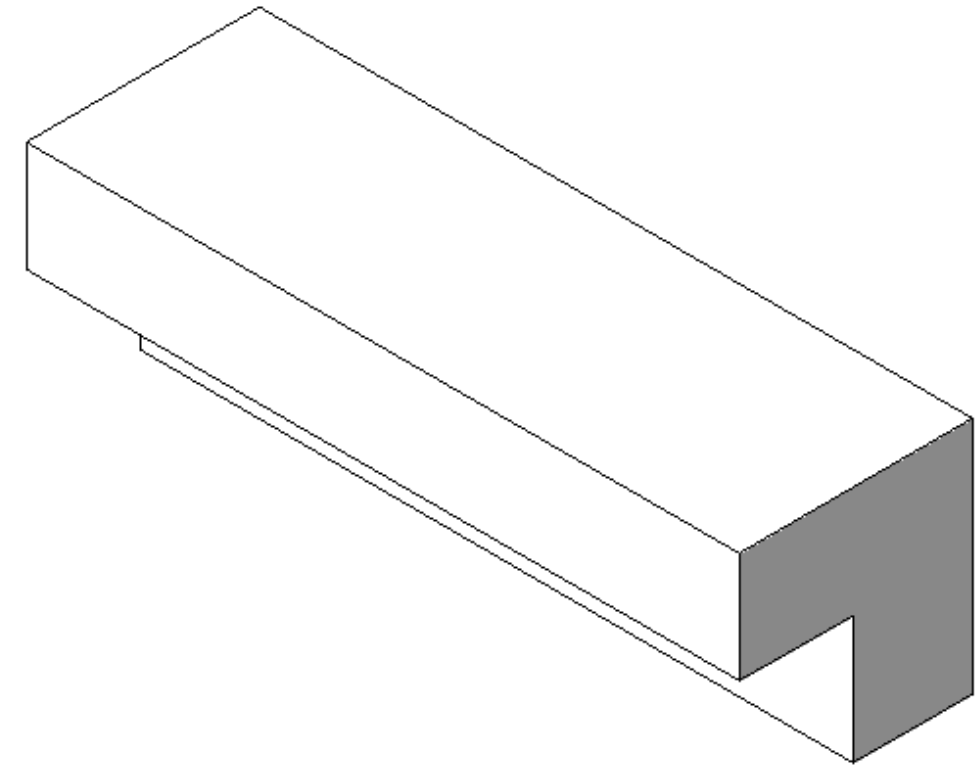
FLORIDA INTERNATIONAL UNIVERSITY
 DEPARTMENT OF PHYSICS
 11200 SW 8TH ST, MIAMI, FL 33199

DATE 04/04/11	PROJECT DIAGNOSTIC DESIGN	SHEET 1 OF 1
SCALE 2:1	TITLE COVERPLATE 2	DRAWN BY RAMONA VALENZUELA PEREZ

NOTES.

- 1. ANGLEBLOCK 1 MADE TO ROTATE MODULE 28 DEGREES AWAY FROM CENTER OF MOUNT PIECE 1.

REV	DESCRIPTION	DATE	APPROVED



ALL DIMENSIONS ARE IN INCHES.
 TOLERANCES UNLESS OTHERWISE SPECIFIED:
 X.X +/- .03
 X.XX +/- .01
 X.XXX +/- .005

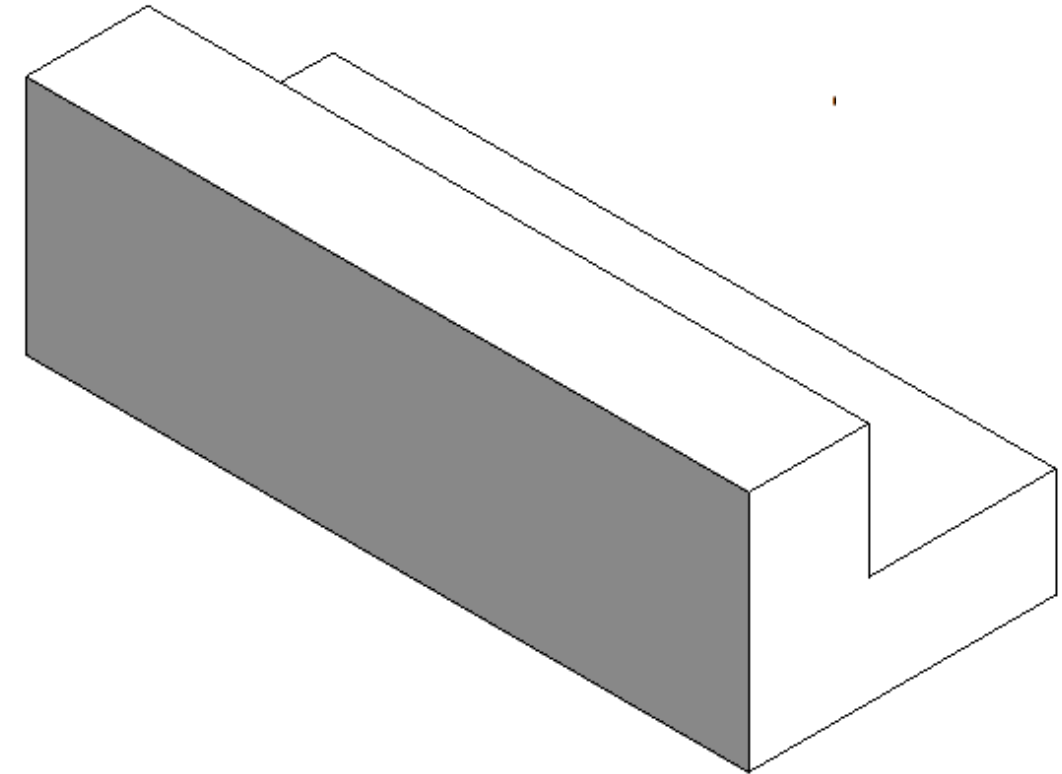
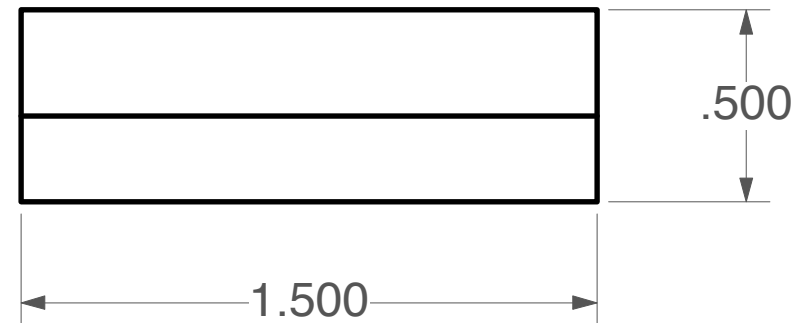
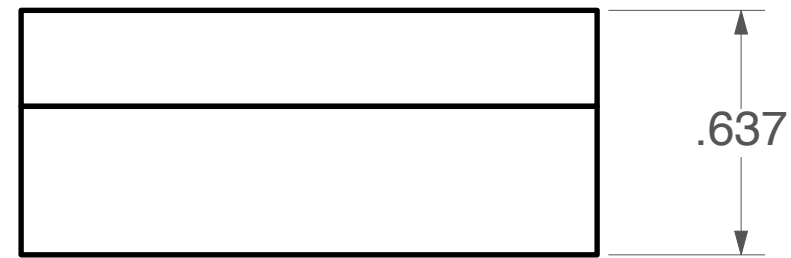
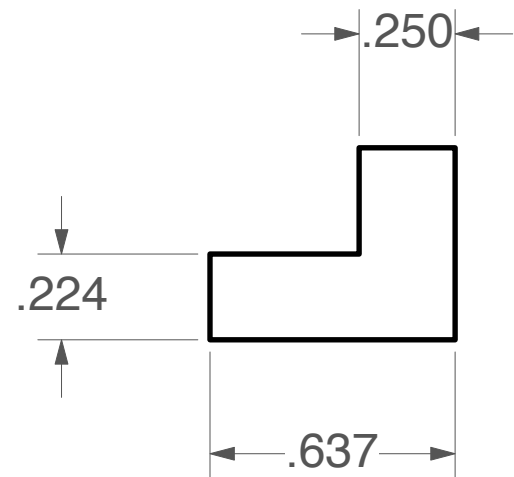
∠ +/- .5°

FIU	FLORIDA INTERNATIONAL UNIVERSITY DEPARTMENT OF PHYSICS 11200 SW 8TH ST, MIAMI, FL 33199	
	DATE 04/04/11	PROJECT DIAGNOSTIC DESIGN
SCALE 2:1	TITLE ANGLEBLOCK 1	SHEET 1 OF 1
DRAWN BY RAMONA VALENZUELA PEREZ		

NOTES.

1. ANGLEBLOCK 2 MADE TO ROTATE MODULE 10 DEGREES TOWARDS CENTER OF MOUNT PIECE 1.

REV	DESCRIPTION	DATE	APPROVED



ALL DIMENSIONS ARE IN INCHES.
 TOLERANCES UNLESS OTHERWISE SPECIFIED:
 X.X +/- .03
 X.XX +/- .01
 X.XXX +/- .005

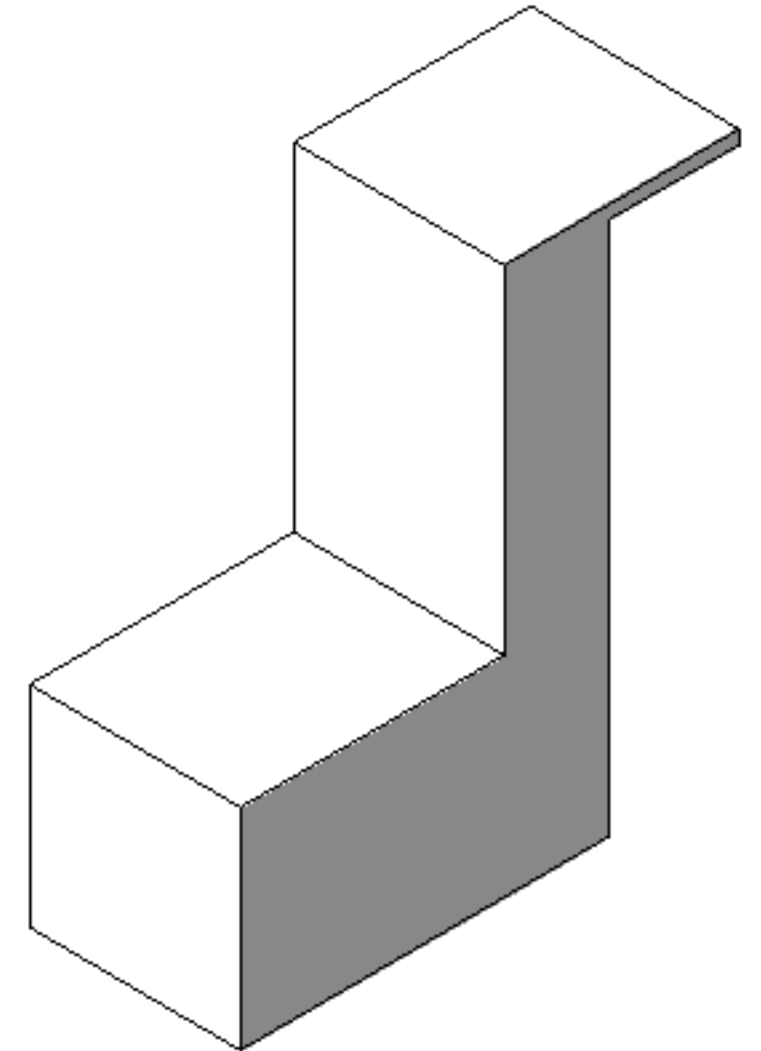
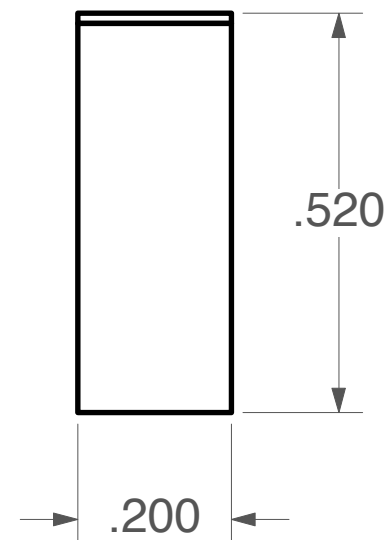
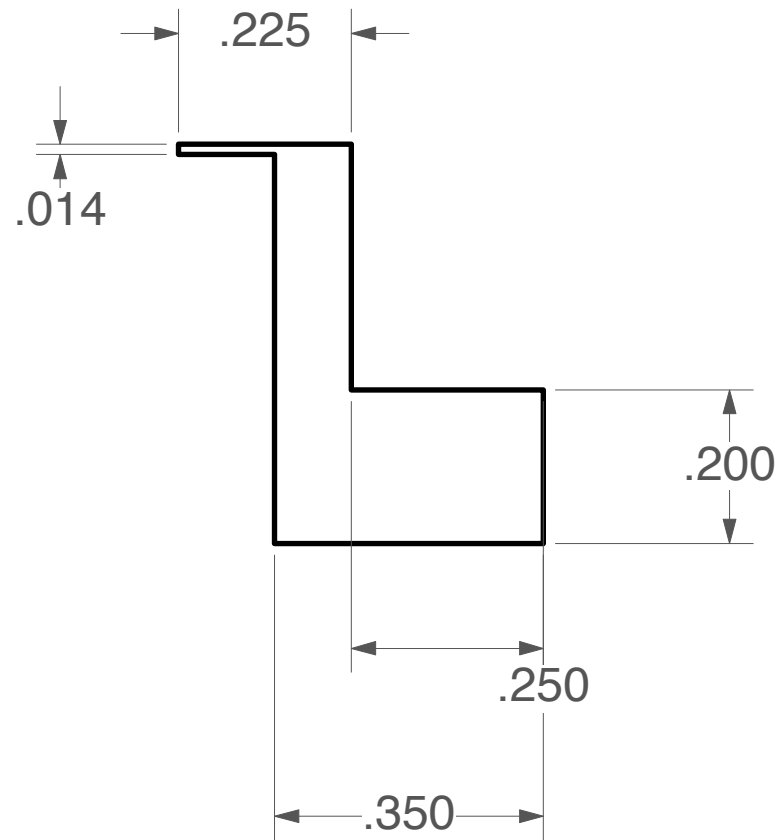
∠ +/- .5°

FIU	FLORIDA INTERNATIONAL UNIVERSITY DEPARTMENT OF PHYSICS 11200 SW 8TH ST, MIAMI, FL 33199	
	DATE 04/04/11	PROJECT DIAGNOSTIC DESIGN
SCALE 2:1	SHEET 1 OF 1	
TITLE ANGLEBLOCK 2	DRAWN BY RAMONA VALENZUELA PEREZ	

NOTES.

1. ANGLEBLOCK 3 MADE TO ROTATE MOUNT BY 43 DEGREES.

REV	DESCRIPTION	DATE	APPROVED



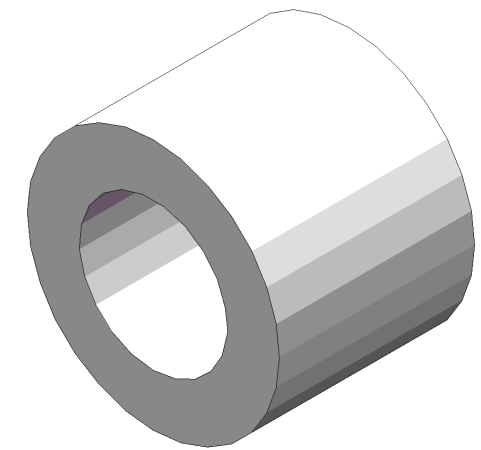
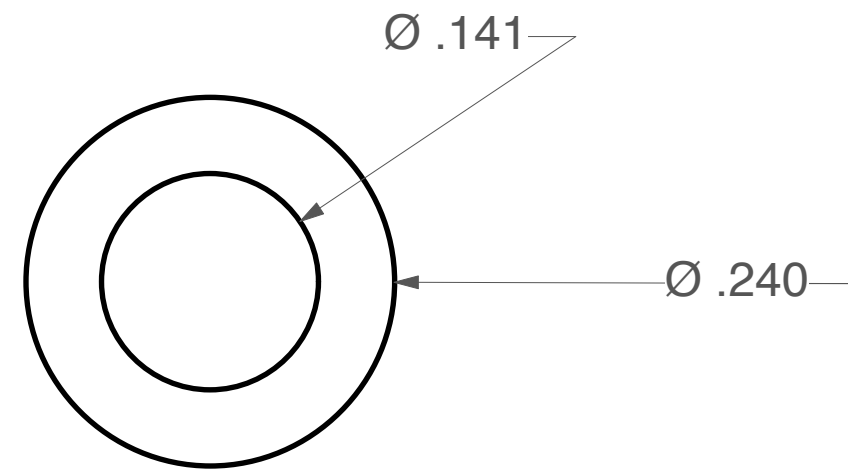
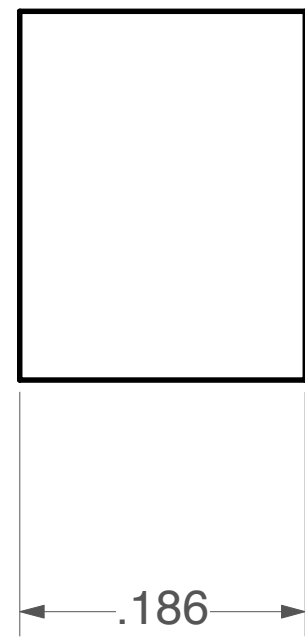
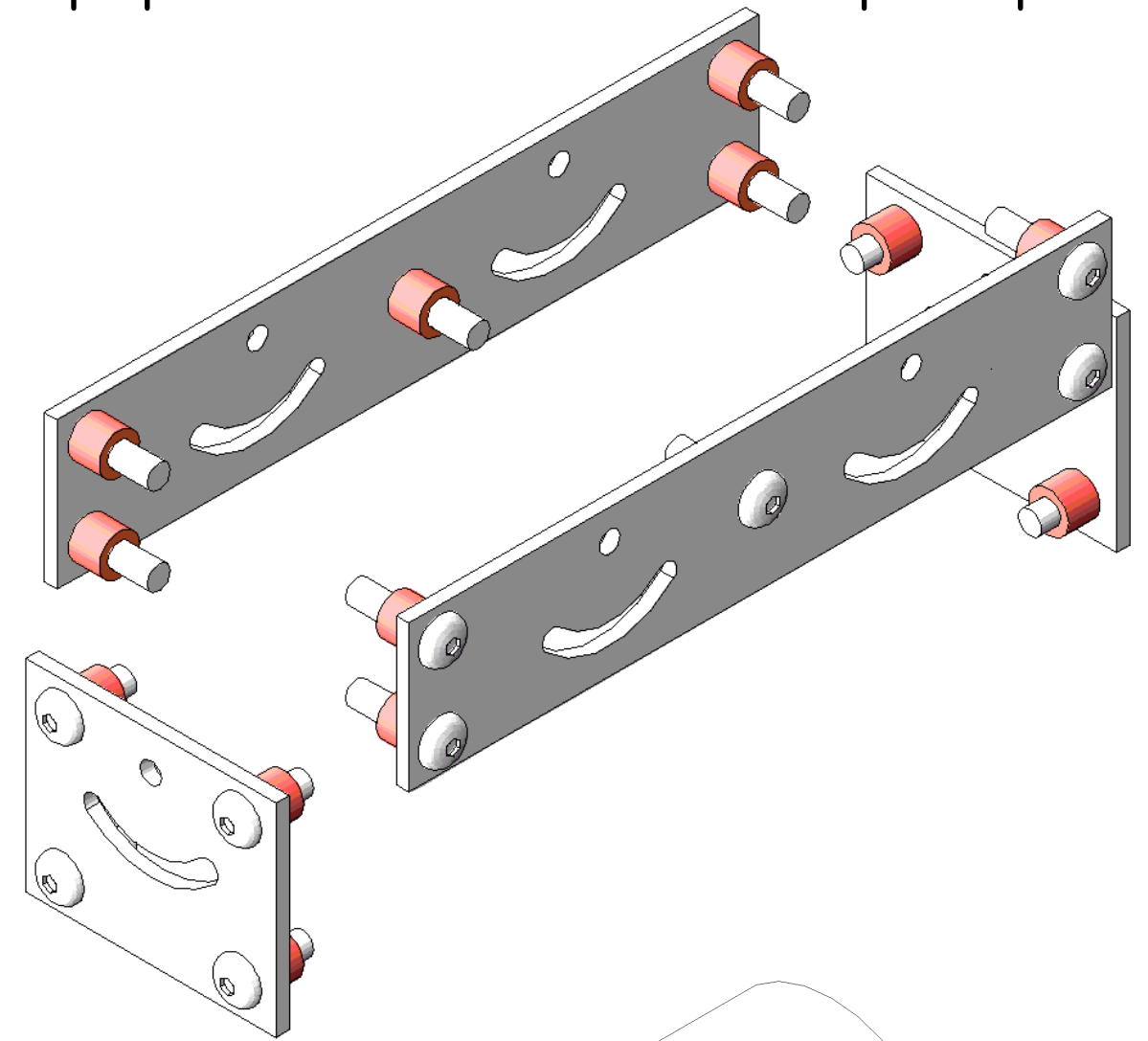
ALL DIMENSIONS ARE IN INCHES.
TOLERANCES UNLESS OTHERWISE SPECIFIED:
X.X +/- .03
X.XX +/- .01
X.XXX +/- .005



FLORIDA INTERNATIONAL UNIVERSITY
DEPARTMENT OF PHYSICS
11200 SW 8TH ST, MIAMI, FL 33199


DATE 04/04/11	PROJECT DIAGNOSTIC DESIGN	SHEET 1 OF 1
SCALE 4:1	TITLE ANGLEBLOCK 3	DRAWN BY RAMONA VALENZUELA PEREZ

REVISION HISTORY			
REV	DESCRIPTION	DATE	APPROVED



ALL DIMENSIONS ARE IN INCHES.
 TOLERANCES UNLESS OTHERWISE SPECIFIED:
 X.X +/- .03
 X.XX +/- .01
 X.XXX +/- .005

∠ +/- .5°

 FLORIDA INTERNATIONAL UNIVERSITY DEPARTMENT OF PHYSICS 11200 SW 8TH ST, MIAMI, FL 33199	DATE 04/04/11	PROJECT	SHEET 1 OF 1
	SCALE 8:1	DIAGNOSTIC DESIGN	
TITLE	COVERPLATE WASHER		DRAWN BY RAMONA VALENZUELA PEREZ