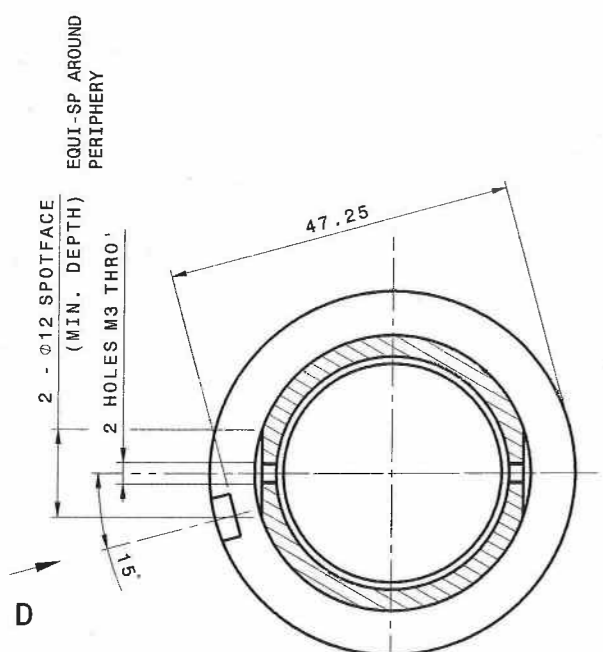
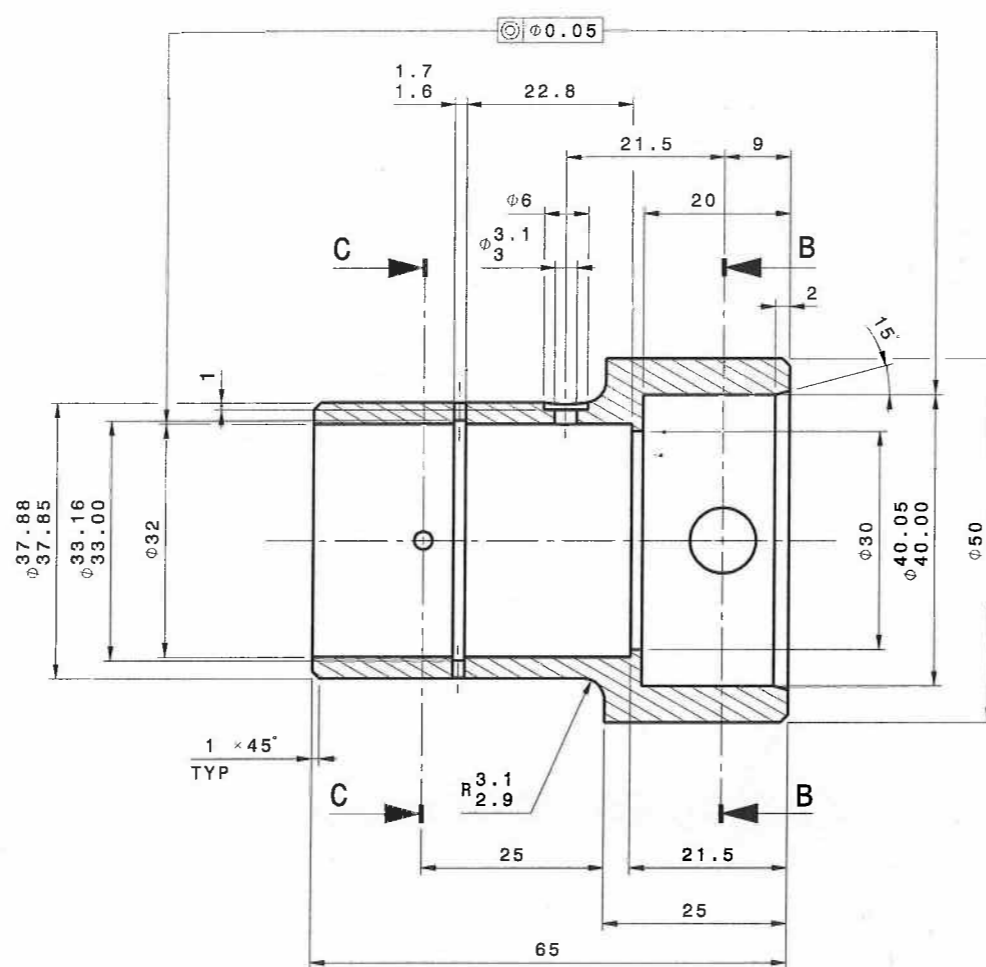


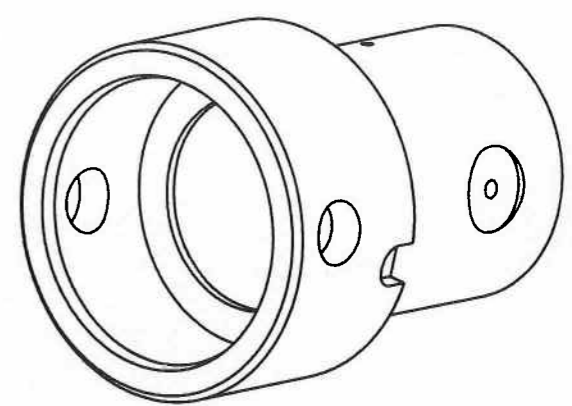
THIRD ANGLE PROJECTION - DO NOT SCALE - IF IN DOUBT ASK



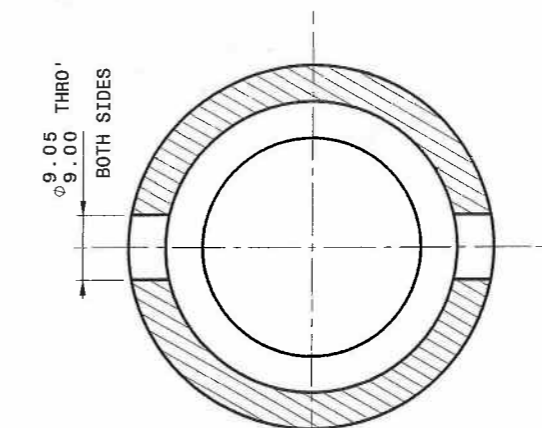
SECTION C - C



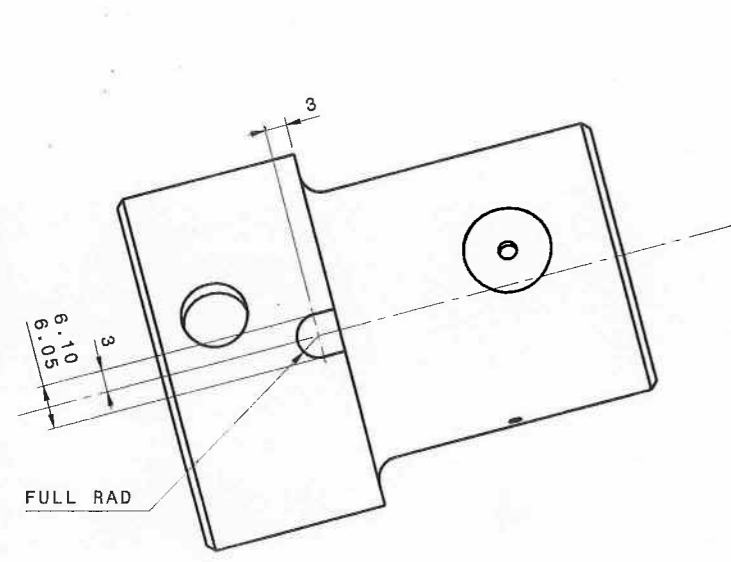
SECTION A - A



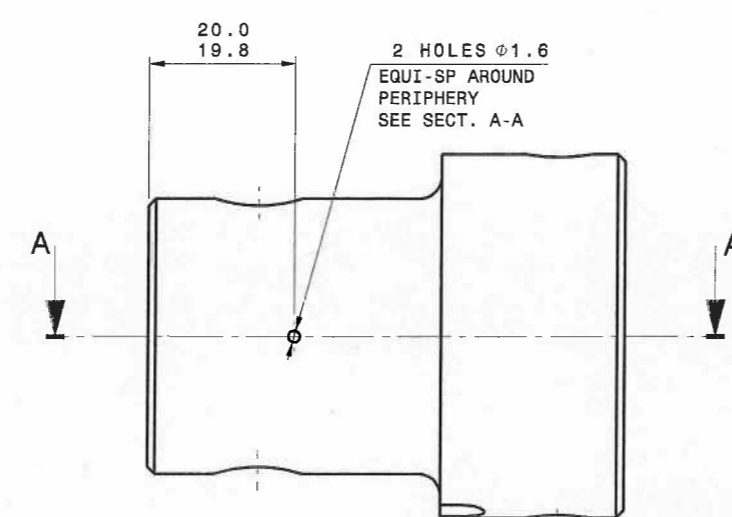
ISOMETRIC VIEW



SECTION B - B



VIEW ON ARROW D



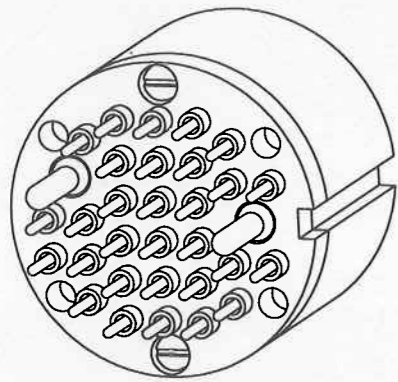
**FOR MANUFACTURE**

NOTES:-

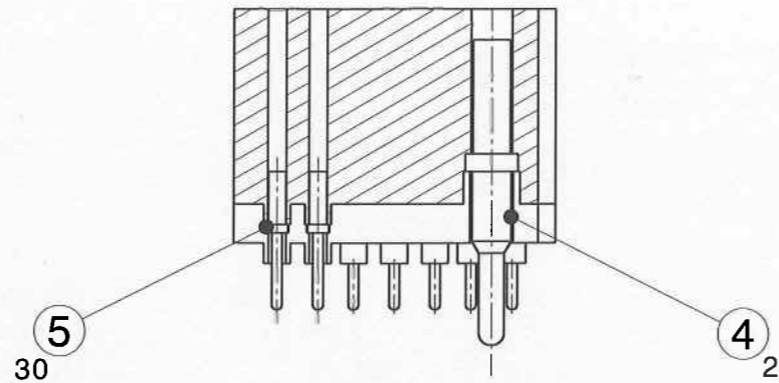
- UNLESS OTHERWISE STATED THE FOLLOWING APPLIES.
- 1. ALL MACHINING TOLERANCES TO  $\pm 0.2\text{mm}$  EXCEPT WHERE SHOWN OTHERWISE
- 2. ALL THREADS ARE METRIC COARSE SERIES 6H/6g (RIGHT HAND)
- 3. ALL CUT OR MACHINED SHARP EDGES TO BE DE-BURRED

CAD DRAWN NOT TO BE MODIFIED BY HAND				MATERIAL AND SPECIFICATION				DIMENSIONS IN MILLIMETERS UNLESS STATED				TECHNICAL CLASSIFICATIONS (FOR INTERNAL USE ONLY)				DRAWN BY		P.R.JONES		SUBJECT TO WORK PROCEDURE			
				ST. STEEL 316				GENERAL TOLERANCING IS TO 2768-1 & -2				R/H				CHECKED BY		S.BAILEY		WELD ENG			
				SURFACE TEXTURE UNLESS STATED				PERMISSIBLE DEVIATIONS FOR LINEAR DIMS				QUALITY CLASS				APPROVED BY		S ALLAN					
				N7				PERMISSIBLE DEVIATIONS FOR ANGULAR DIMS				THIS DRAWING IS THE PROPERTY OF CCFE AND MAY NOT WITHOUT THE PRIOR CONSENT OF CCFE BE COPIED IN WHOLE OR IN PART OR USED FOR ANY PURPOSE OTHER THAN THAT FOR WHICH IT IS SUPPLIED				DRG No		M 11501213		CURRENT ISSUE			
				SURFACE TREATMENT				D O REF				ORIGINAL SCALE				FIRST ISSUE DATE		SHEET No 01 OF 01 SHEETS A1		C			
				CLEAN				50				2:1				010310							
C 310712 SEE MOD. SHEET M115/09				IF NW RG DDI.73				M11501282				SEE SMARTTEAM											
B 211010 SEE MOD. SHEET M115/05				IF NW RG DDI.61																			
ISSUE DATE MODIFICATIONS/COMMENTS				DRN BY CHKD APPD REF				WEIGHT				REMOVE ALL BURRS AND SHARP EDGES											
								0.26kg															

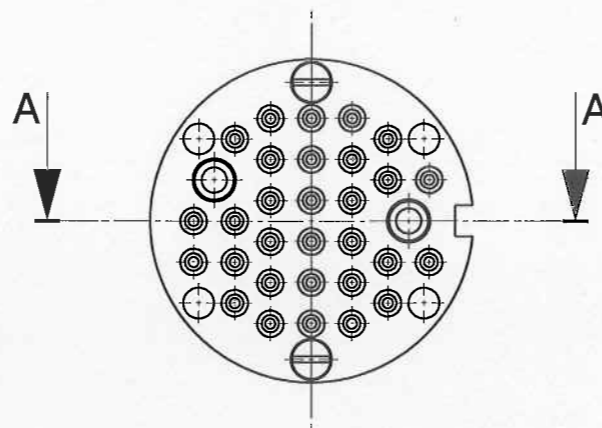
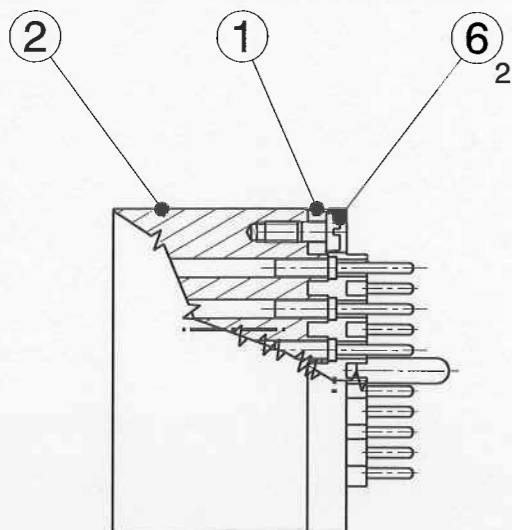
THIRD ANGLE PROJECTION - DO NOT SCALE - IF IN DOUBT ASK



ISOMETRIC VIEW



SECTION A - A



ITEM No	DRAWING No	DESCRIPTION	No OFF
1	M11501201	PIN HOUSING	1
2	M11501202	PIN RETAINER	1
3			
4	LBCX SEE NOTE 1.	CONTACT PIN 1.5-2.5sq.mm RS stock No 437-4709	2
5	DJVX SEE NOTE 2.	MALE CONTACT DPIN-MC Caburn Pt No 1510101	30
6	JCHS-2-6	SCREW M2 x 6Lg CHEESE HD STAIN.S.	2

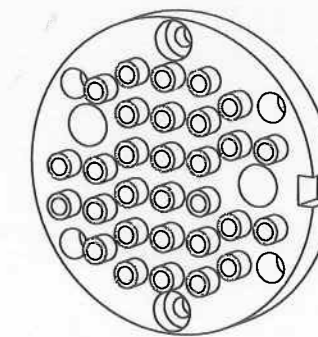
NOTES:-

- ITEMS 4 AVAILABLE FROM:-  
RS COMPONENTS LTD  
WALSINGHAM DRIVE  
NUNEATON  
CV10 7RS  
TEL:- 02476 3377700 FAX:- 0845 850 9911  
uk.rs-online.com
- ITEMS 5 AVAILABLE FROM:-  
CABURN-MDC LTD  
MENZIES ROAD  
PONSWOOD INDUSTRIAL ESTATE  
ST. LEONARDS-ON-SEA  
EAST SUSSEX TN38 9BB  
TEL:- 0870 428 7646 FAX:- 0870 428 7647  
www.sales@caburn.co.uk

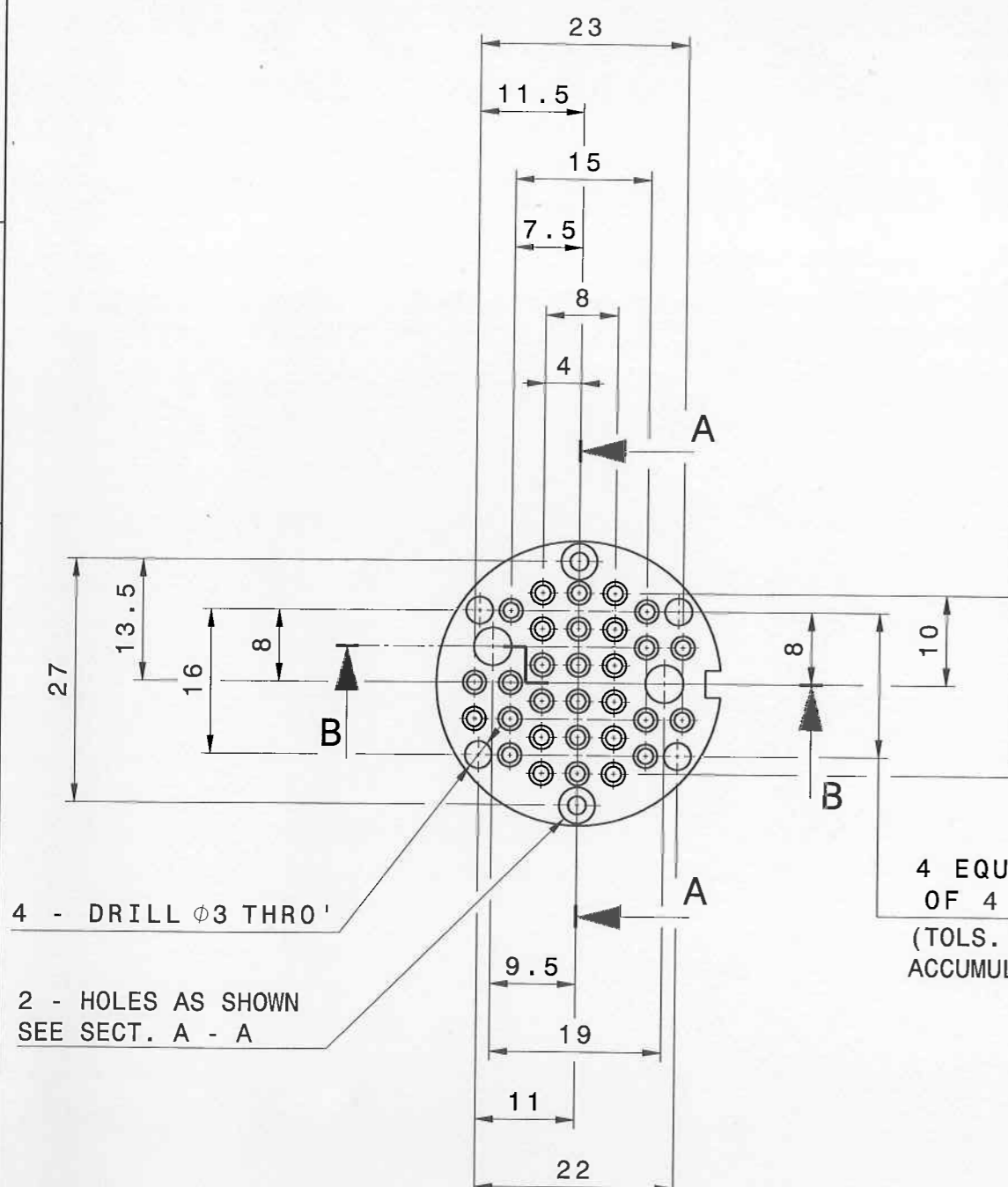
CAD DRAWN NOT TO BE MODIFIED BY HAND				MATERIAL AND SPECIFICATION				DIMENSIONS IN MILLIMETERS UNLESS STATED				TECHNICAL CLASSIFICATIONS (FOR INTERNAL USE ONLY)				DRAWN BY P.R.JONES		SUBJECT TO WORK PROCEDURE	
				SEE ITEMS LIST				GENERAL TOLERANCING IS TO 2768-1 & -2				R/H RAD. VAC. TRIT.				CHECKED BY S.BAILEY		WELD ENG.	
				SURFACE TEXTURE UNLESS STATED				PERMISSIBLE DEVIATIONS FOR LINEAR DIMS.				QUALITY CLASS				APPROVED BY S.ALLAN			
				SURFACE TREATMENT CLEAN				PERMISSIBLE DEVIATIONS FOR ANGULAR DIMS				THIS DRAWING IS THE PROPERTY OF CCFE AND MAY NOT WITHOUT THE PRIOR CONSENT OF CCFE BE COPIED IN WHOLE OR IN PART OR USED FOR ANY PURPOSE OTHER THAN THAT FOR WHICH IT IS SUPPLIED				TITLE MALE CONNECTOR ASSY			
ISSUE DATE MODIFICATIONS/COMMENTS				DRN.BY CHKD. APPD. REF				UP TO 10 UP TO 30 UP TO 50 UP TO 120 UP TO 400				UP TO 10 UP TO 30 UP TO 50 UP TO 120 UP TO 400				DRG No M11501205		CURRENT ISSUE B	
WEIGHT 0.02kg				REMOVE ALL BURRS AND SHARP EDGES				D.O. REF 50				ORIGINAL SCALE 1:1				FIRST ISSUE DATE 010310		SHEET No 01 01 SHEETS A2	



THIRD ANGLE PROJECTION - DO NOT SCALE - IF IN DOUBT ASK



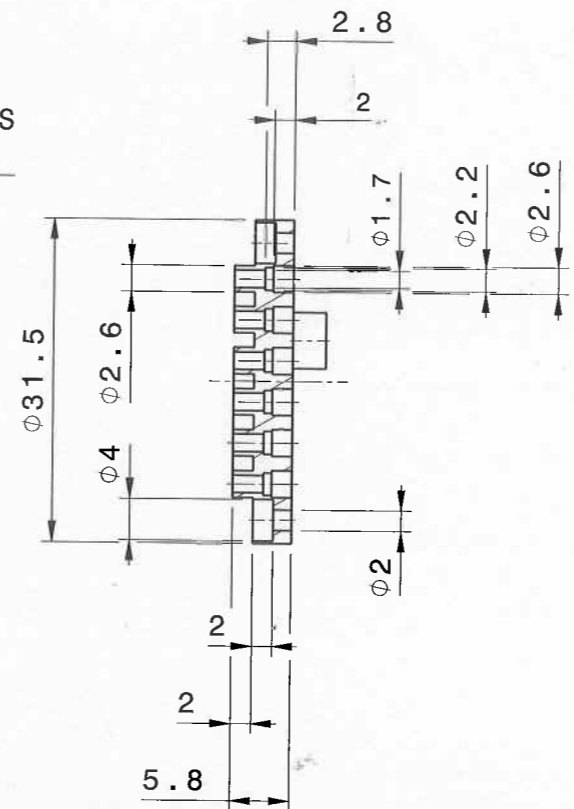
ISOMETRIC VIEW



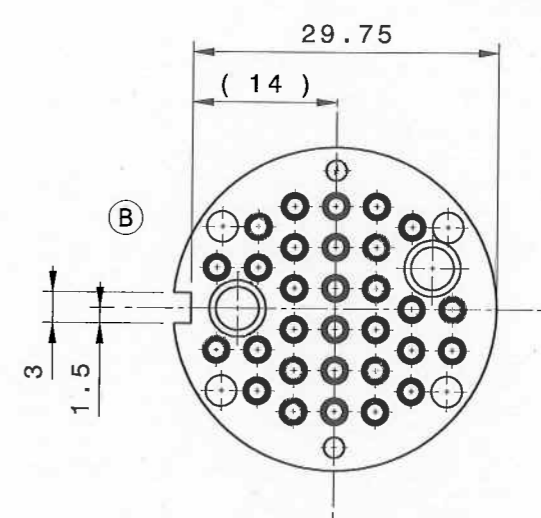
4 - DRILL  $\phi 3$  THRO'  
2 - HOLES AS SHOWN  
SEE SECT. A - A

5 EQUAL PITCHES  
OF 4 = 20  
(TOLS. NON-  
ACCUMULATIVE)

4 EQUAL PITCHES  
OF 4 = 16  
(TOLS. NON-  
ACCUMULATIVE)



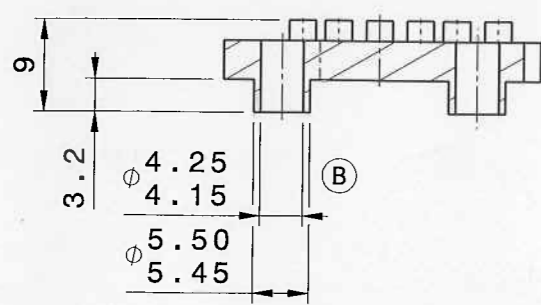
SECTION A - A



SECTION B - B

NOTES:-

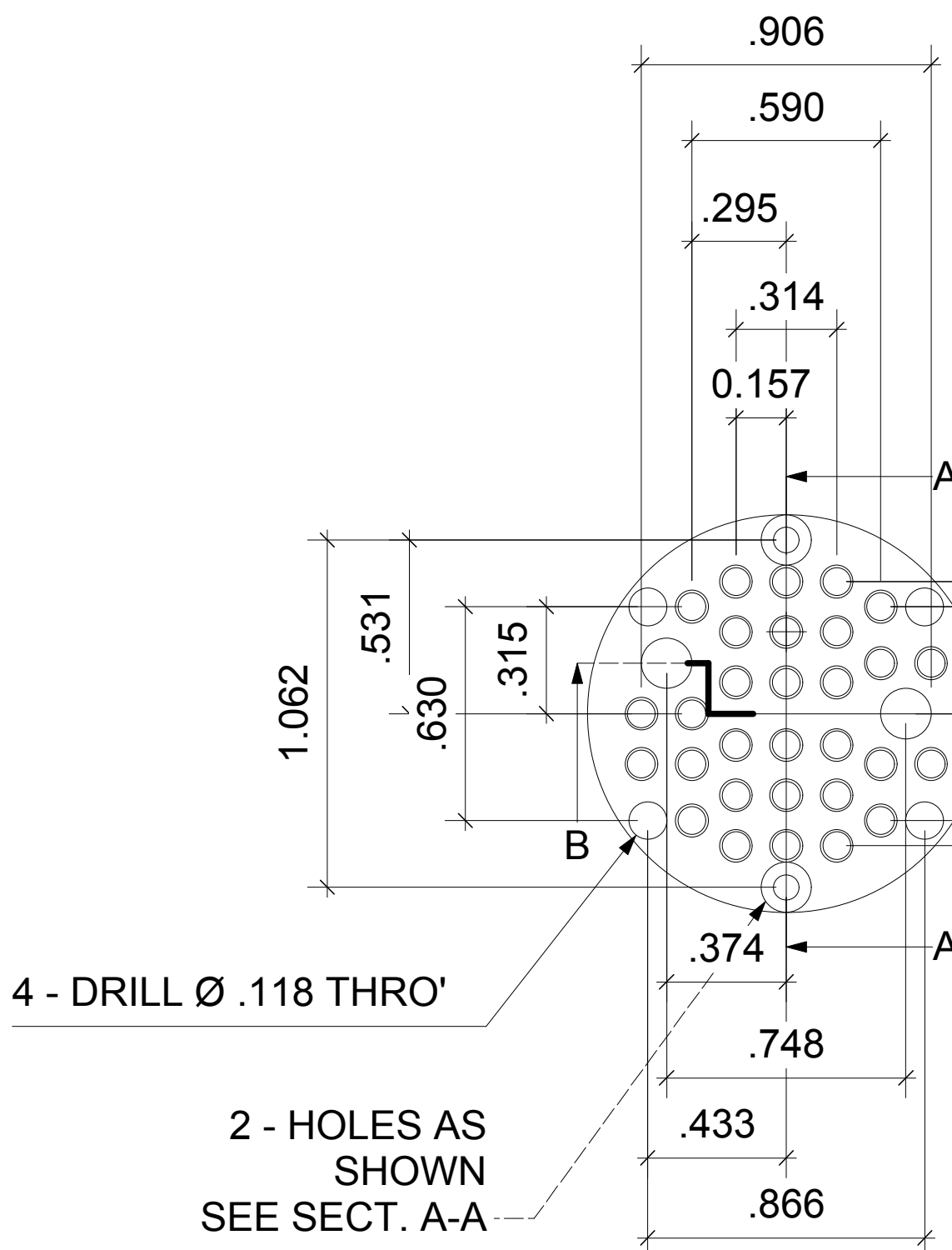
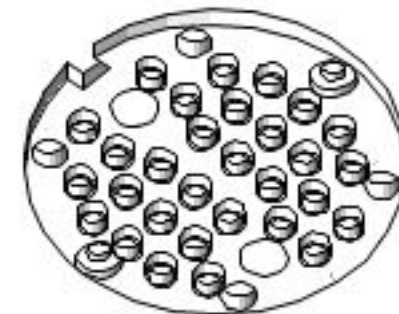
1. ALL CUT OR MACHINED SHARP EDGES TO BE DE-BURRED.
2. DIMENSIONS IN BRACKETS ARE FOR REFERENCE ONLY.



CAD DRAWN NOT TO BE MODIFIED BY HAND				MATERIAL AND SPECIFICATION				DIMENSIONS IN MILLIMETERS UNLESS STATED				TECHNICAL CLASSIFICATIONS (FOR INTERNAL USE ONLY)				DRAWN BY		P. R. JONES		SUBJECT TO WORK PROCEDURE			
				PEEK 1000				GENERAL TOLERANCING IS TO 2768-1 & -2				R/H				CHECKED BY		S. BAILEY		WELD ENG.			
				SURFACE TEXTURE UNLESS STATED				PERMISSIBLE DEVIATIONS FOR LINEAR DIMS.				R/H				APPROVED BY		S. ALLAN					
				N7				PERMISSIBLE DEVIATIONS FOR ANGULAR DIMS PERMISSIBLE DEVIATIONS FOR RANGES OF LENGTHS OF THE SHORTER SIDE OF THE ANGLE CONCERNED				QUALITY CLASS				United Kingdom Atomic Energy Authority		CCFE		CULHAM CENTRE FOR FUSION ENERGY			
				SURFACE TREATMENT				PERMISSIBLE DEVIATIONS FOR ANGULAR DIMS PERMISSIBLE DEVIATIONS FOR RANGES OF LENGTHS OF THE SHORTER SIDE OF THE ANGLE CONCERNED				THIS DRAWING IS THE PROPERTY OF CCFE AND MAY NOT WITHOUT THE PRIOR CONSENT OF CCFE BE COPIED IN WHOLE OR IN PART OR USED FOR ANY PURPOSE OTHER THAN THAT FOR WHICH IT IS SUPPLIED				TITLE		PIN HOUSING					
				CLEAN				PERMISSIBLE DEVIATIONS FOR ANGULAR DIMS PERMISSIBLE DEVIATIONS FOR RANGES OF LENGTHS OF THE SHORTER SIDE OF THE ANGLE CONCERNED								DRG No		M 11501201		CURRENT ISSUE			
				USED ON/REF DRAWING												SHEET No		01 OF 01 SHEETS		A2			
B 210411				NOTCH & DIMS: 1.5, 3, (14) & 29.75 ADDED. HOLES DIA. 4.15/4.25 WERE 3.8/3.85				D.O. REF				ORIGINAL SCALE				FIRST ISSUE DATE							
ISSUE DATE				MODIFICATIONS/COMMENTS				50				2:1				010310							
WEIGHT				0.00kg				SEE SMARTTEAM															
				REMOVE ALL BURRS AND SHARP EDGES																			

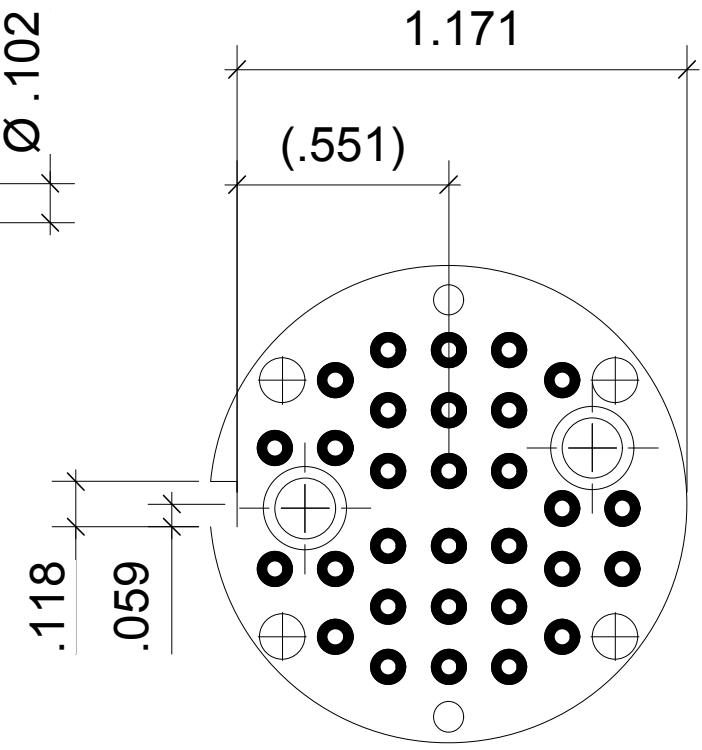
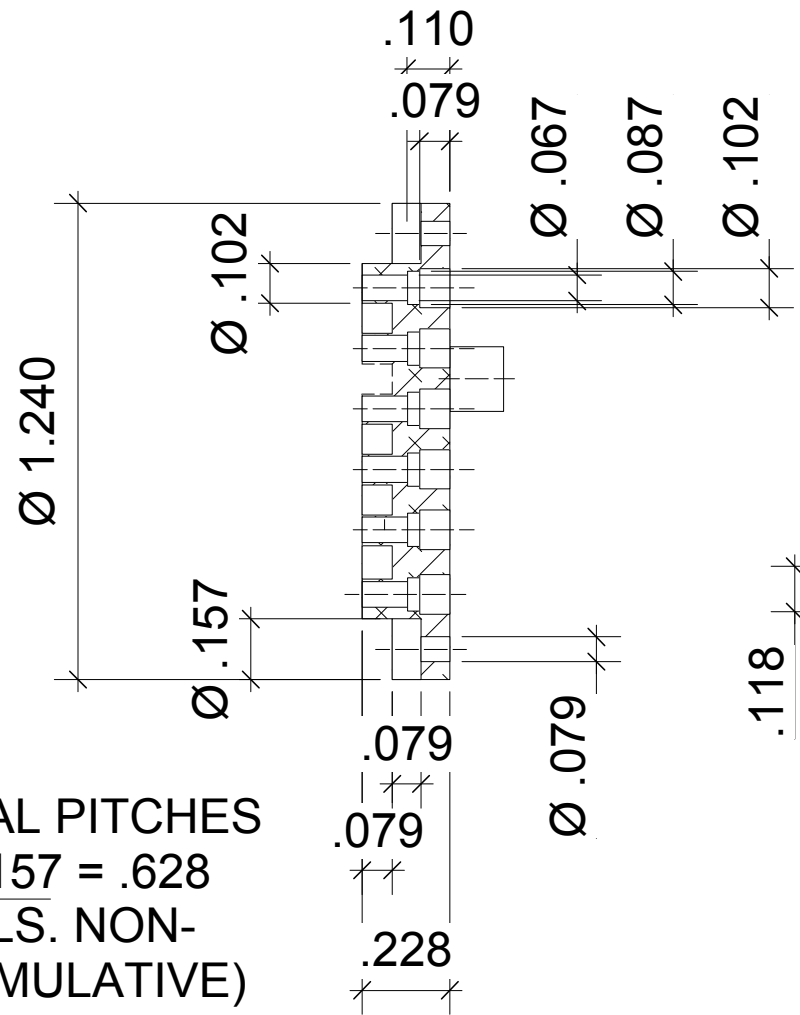
NOTES:

1. ALL CUTS OR MACHINED SHARP EDGES TO BE DE-BURRED.
2. DIMENSIONS IN BRACKETS ARE FOR REFERENCE ONLY.



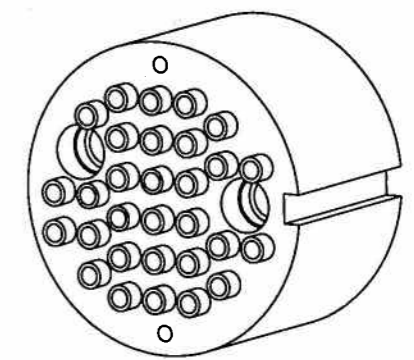
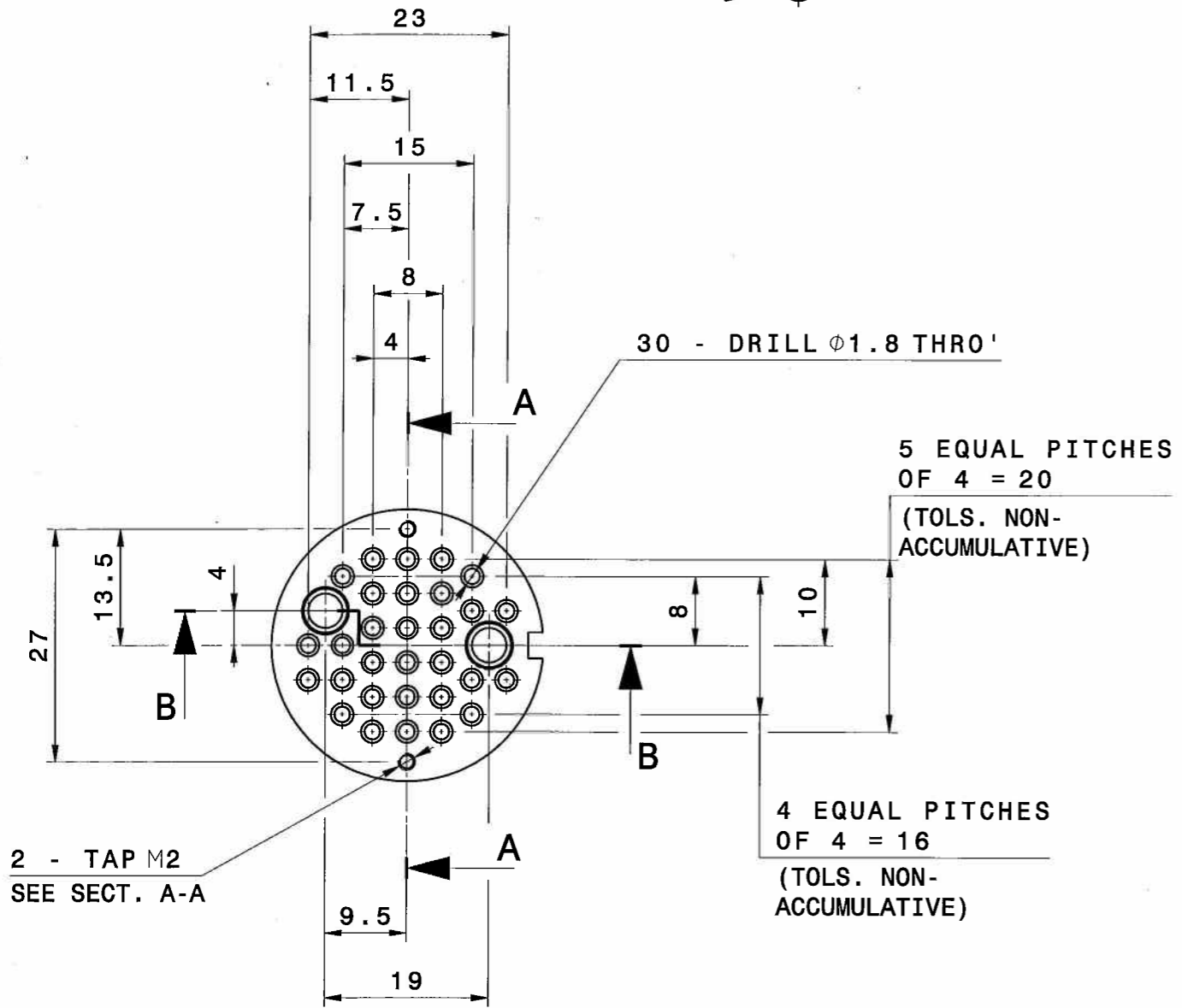
5 EQUAL PITCHES  
OF .157 = .785  
(TOLS. NON-ACCUMULATIVE)

4 EQUAL PITCHES  
OF .157 = .628  
(TOLS. NON-ACCUMULATIVE)

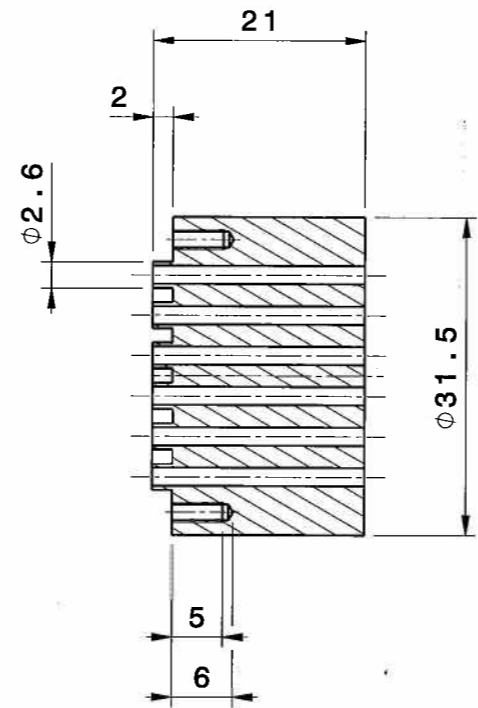


CONVERSION OF UNITS FOR MAST MACHINE DRAWING M11501201:  
DRAWN BY: OMAR LEON  
CHECKED BY: PIERRE AVILA

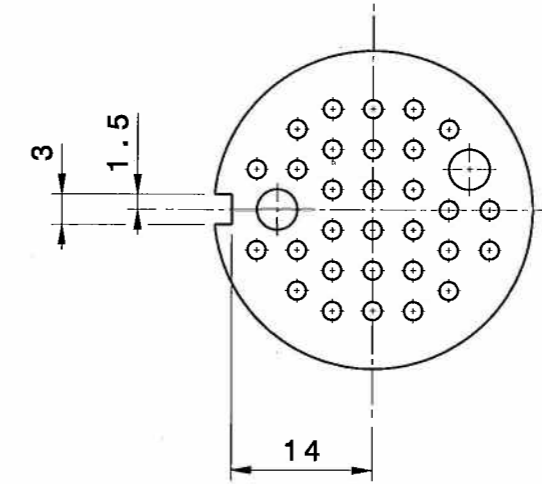
THIRD ANGLE PROJECTION - DO NOT SCALE - IF IN DOUBT ASK



ISOMETRIC VIEW

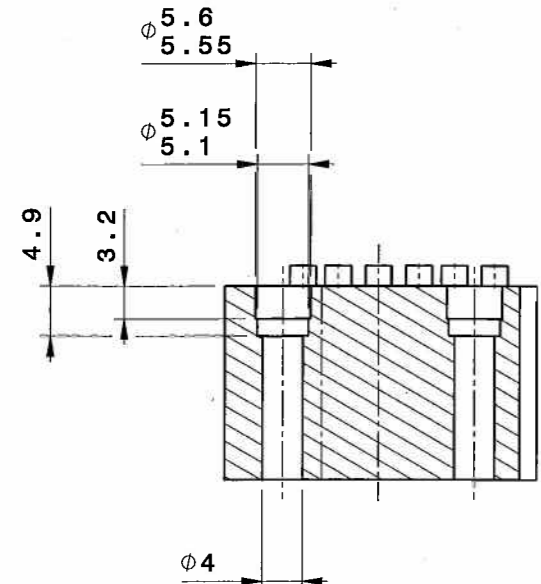


SECTION A - A



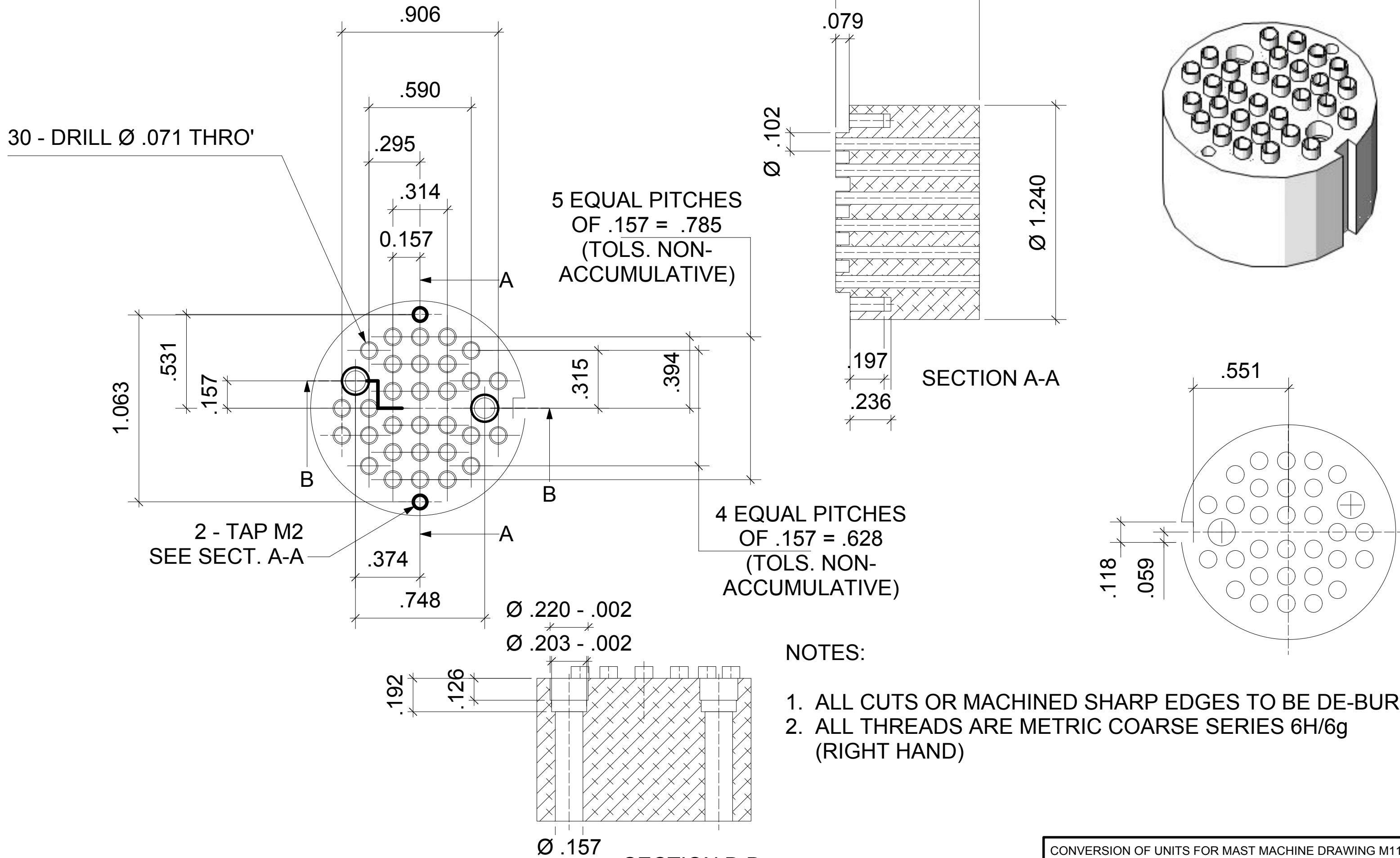
NOTES:-

1. ALL CUT OR MACHINED SHARP EDGES TO BE DE-BURRED.
2. ALL THREADS ARE METRIC COARSE SERIES 6H/6g (RIGHT HAND)



SECTION B - B

CAD DRAWN NOT TO BE MODIFIED BY HAND				MATERIAL AND SPECIFICATION				DIMENSIONS IN MILLIMETERS UNLESS STATED				TECHNICAL CLASSIFICATIONS (FOR INTERNAL USE ONLY)				DRAWN BY P. R. JONES		SUBJECT TO WORK PROCEDURE													
				PEEK 1000				GENERAL TOLERANCING IS TO 2768-1 & -2				R/H				CHECKED BY S. BAILEY		WELD ENG.													
				SURFACE TEXTURE UNLESS STATED				PERMISSIBLE DEVIATIONS FOR LINEAR DIMS.				QUALITY CLASS				APPROVED BY S. ALLAN															
				N7				PERMISSIBLE DEVIATIONS FOR ANGULAR DIMS				THIS DRAWING IS THE PROPERTY OF CCFE AND MAY NOT WITHOUT THE PRIOR CONSENT OF CCFE BE COPIED IN WHOLE OR IN PART OR USED FOR ANY PURPOSE OTHER THAN THAT FOR WHICH IT IS SUPPLIED				TITLE		CCFE													
				SURFACE TREATMENT				UP TO 10				OVER 10 UP TO 50				OVER 50 UP TO 120				OVER 120 UP TO 400				OVER 400				CULHAM CENTRES FOR FUSION ENERGY			
				CLEAN				±1°				±0°30'				±0°20'				±0°10'				±0°5'				DRG No M11501202		CURRENT ISSUE A	
ISSUE DATE MODIFICATIONS/COMMENTS DRN BY CHKD. APPD. REF				USED ON/REF DRAWING				D.O. REF				ORIGINAL SCALE				FIRST ISSUE DATE				SHEET No 01 OF 01 SHEETS A2											
WEIGHT 0.02kg				REMOVE ALL BURRS AND SHARP EDGES				SEE SMARTTEAM				50				2:1				010310											



NOTES:

1. ALL CUTS OR MACHINED SHARP EDGES TO BE DE-BURRED.
2. ALL THREADS ARE METRIC COARSE SERIES 6H/6g (RIGHT HAND)

CONVERSION OF UNITS FOR MAST MACHINE DRAWING M11501202:

DRAWN BY: OMAR LEON  
 CHECKED BY: PIERRE AVILA