

Turn on FIU Data Acquisition Software

Please note that this is not the final version of the software for July's Data Collection.

From the Citrix Network use VNC to log into the computer called mast_rp-pd-pc.mast.ccfе.ac.uk If you are following this procedure then I will have sent you the password. On the Desktop select the LabVIEW 2012 icon and open the program.

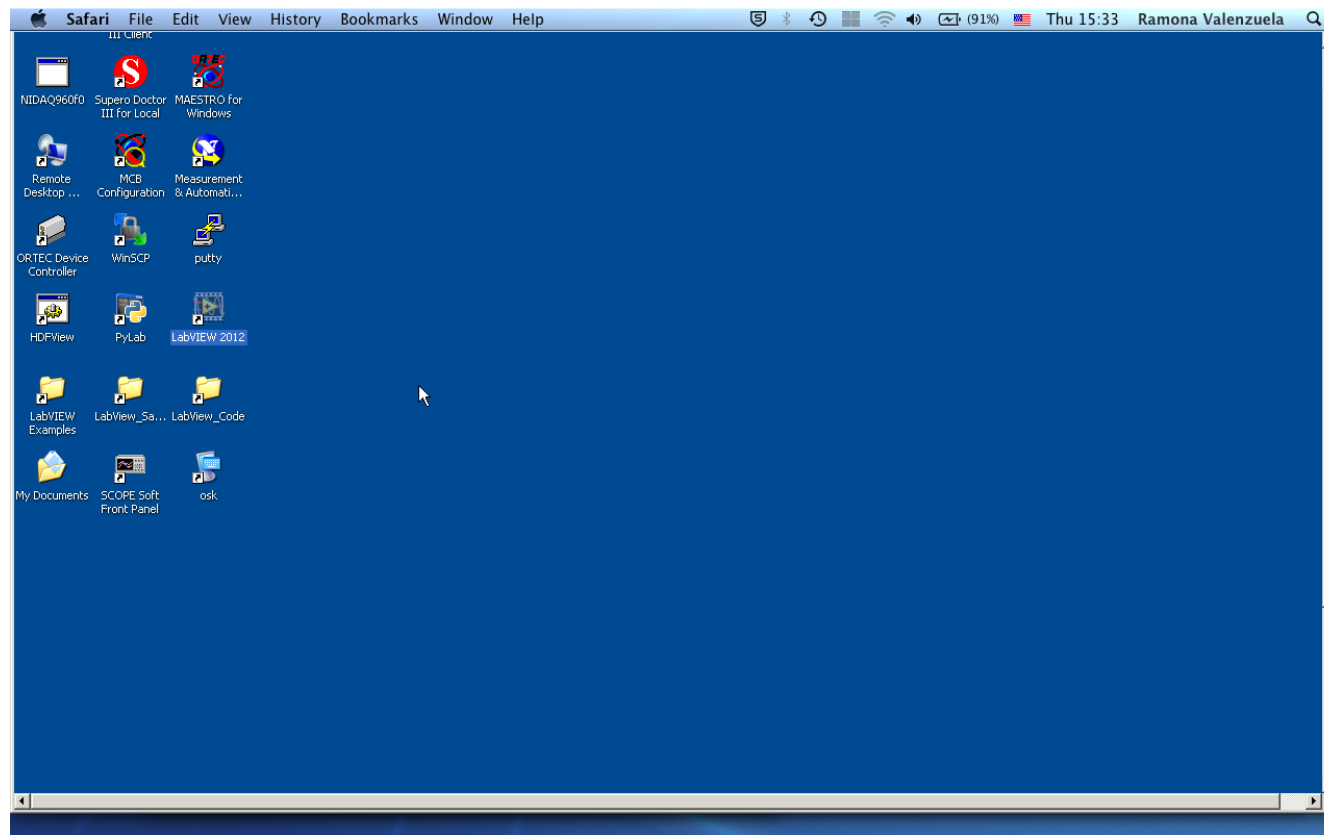


Figure 1: Desktop Background.

Once the main LabVIEW menu, or splashscreen, is open select the file called "Noise_testing_DAQ.lvproj" to open.

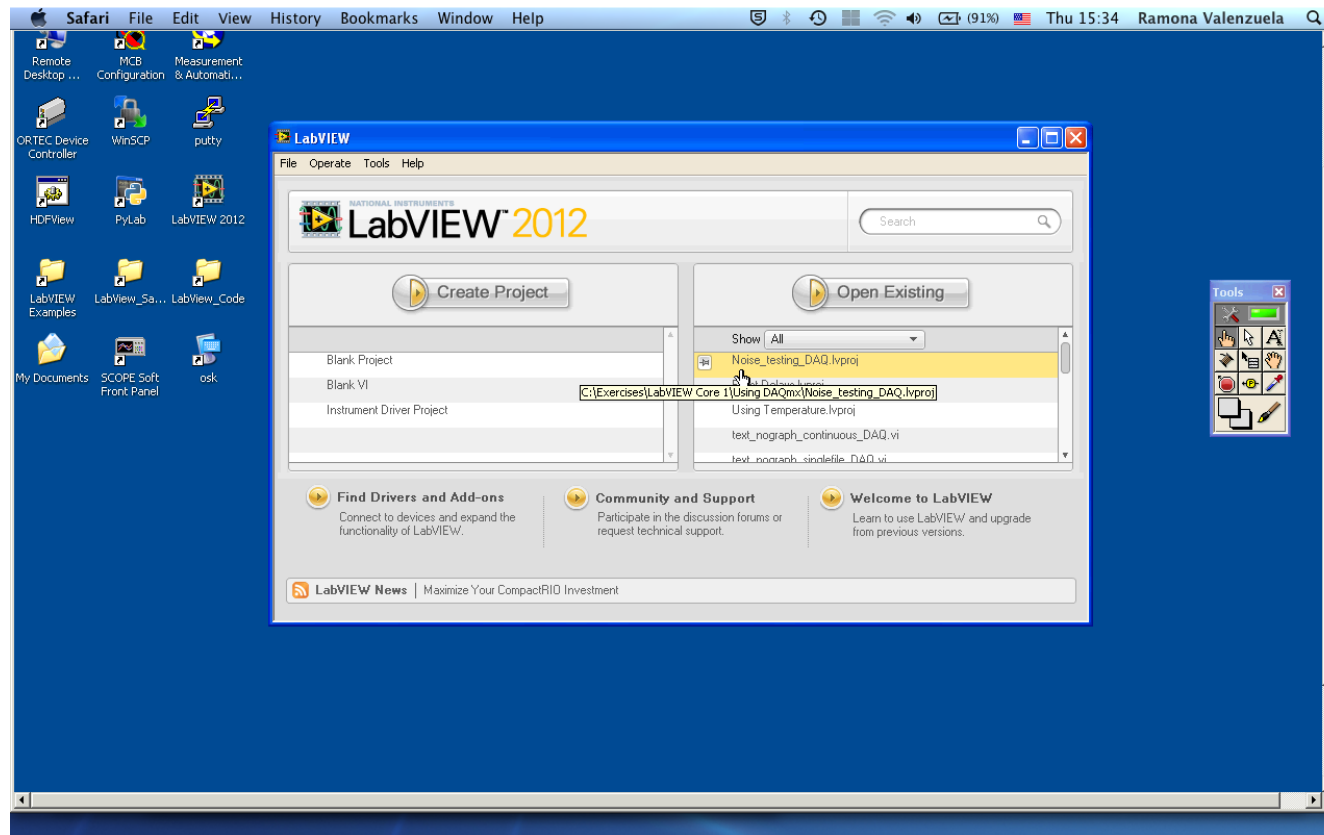


Figure 2: LabVIEW main menu.

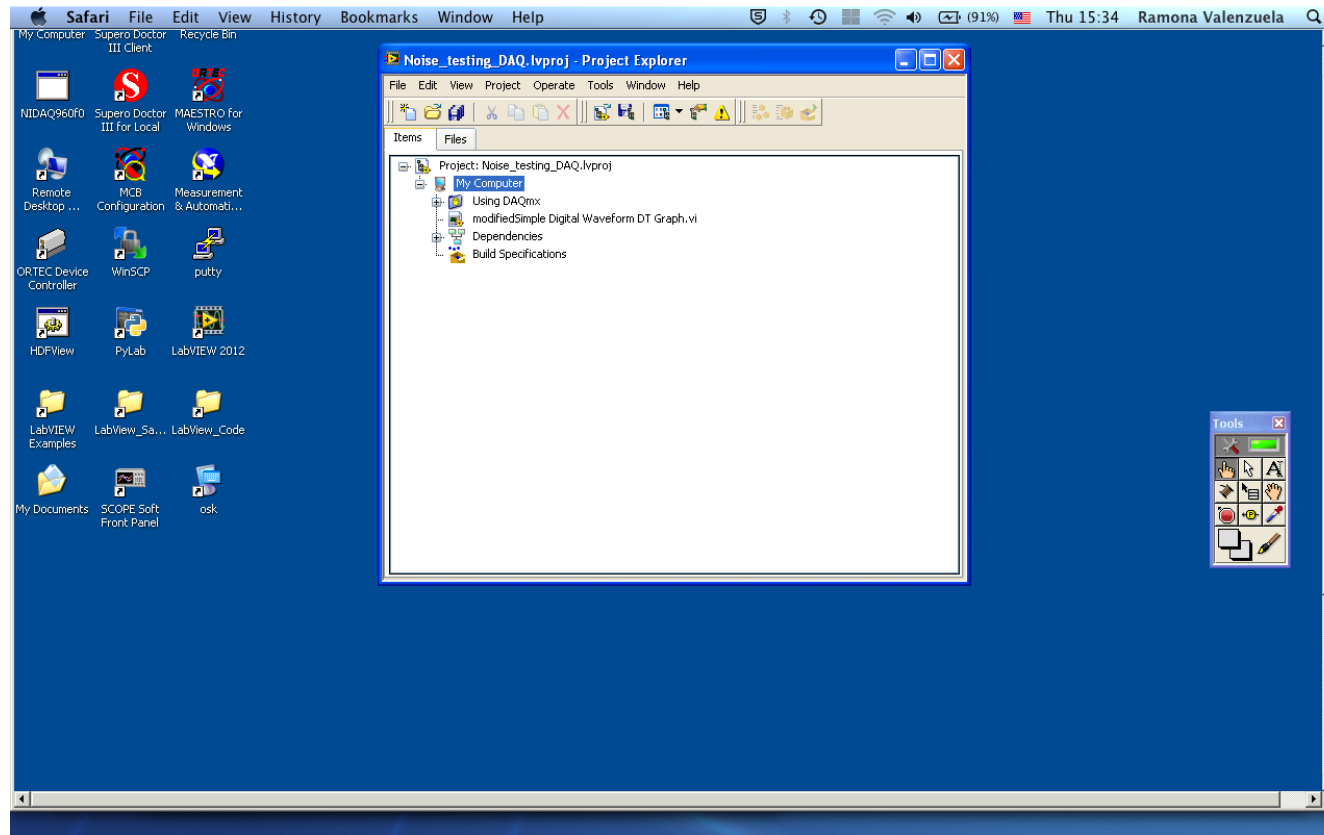


Figure 3: Project view with unexpanded folder.

Once the project is open, expand the "Using DAQmx" file by clicking plus sign to left of folder.

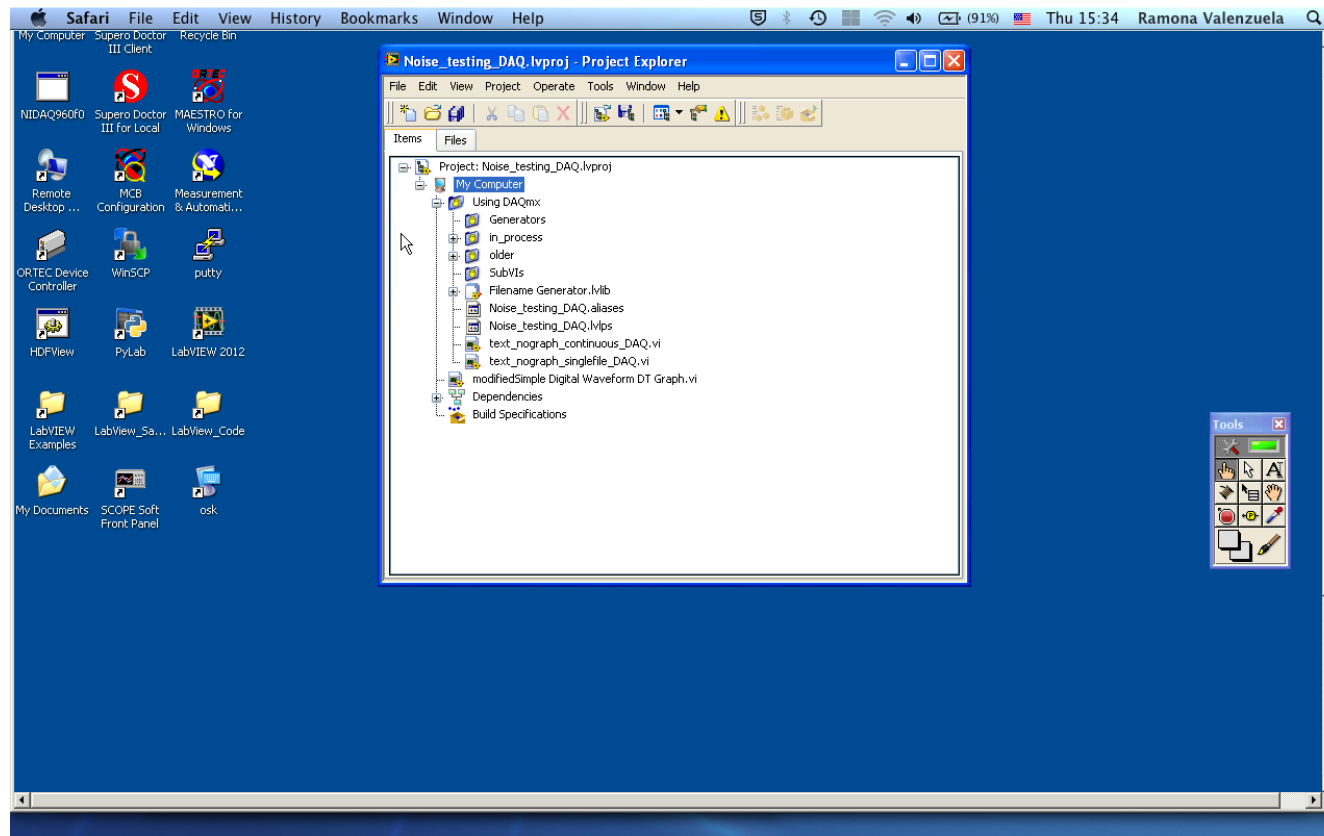


Figure 4: Expanded folder.

Open the file "text_nograph_continuous_DAQ.vi" and you should see the program's front panel.

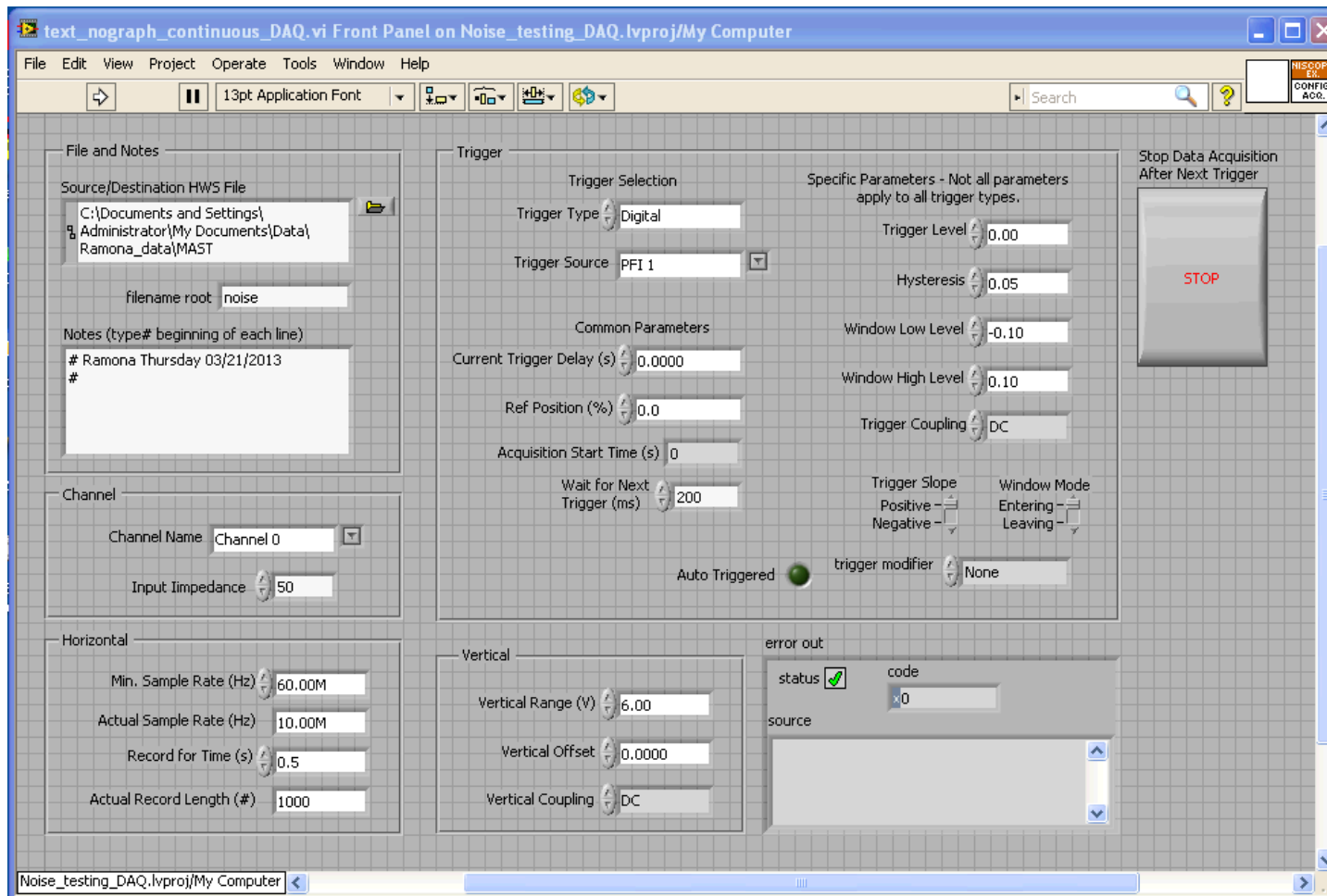


Figure 5: Program front panel.

Default values should be set correctly, but just in case please check these:

- there is the MAST folder selected for the source destination
- specified Channel for which to record data (Default Channel 0)
- verify 50 Ohm "Input Impedance" for Channel
- make sure "Record for Time" is at least 0.5 seconds
- verify 60.00M "Min. Sample Rate"
- verify "Trigger Type" is Digital
- verify "Trigger Source" is PFI 1

To run the program, press the white arrow in the top left-hand corner of the program front panel window. While it is running, the white arrow will turn black.

The program will stop on its own after the maximum amount of time to wait for the trigger has passed.

If you need to select the folder for the file source destination, then select the MAST folder on the Desktop and click "Current Folder."

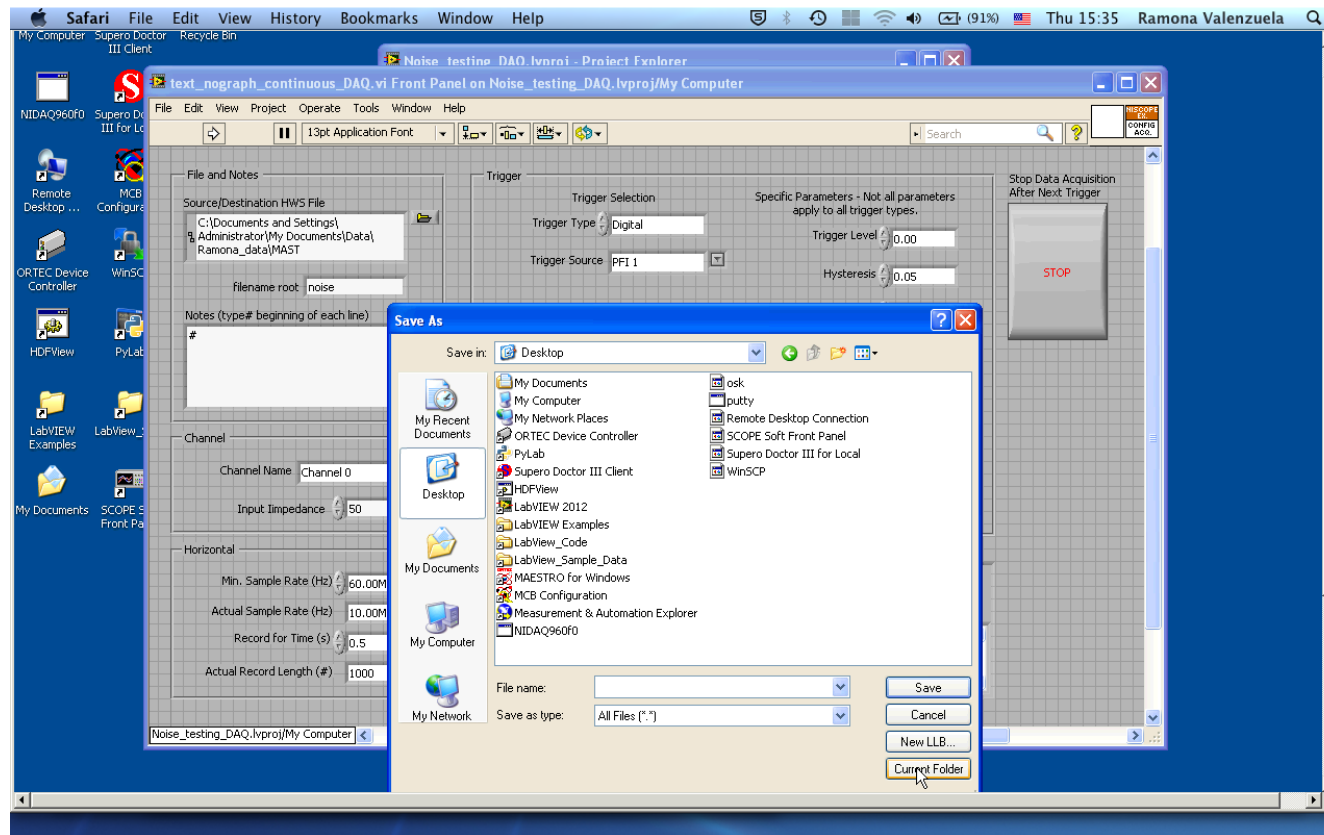


Figure 6: Setting directory for source destination.