

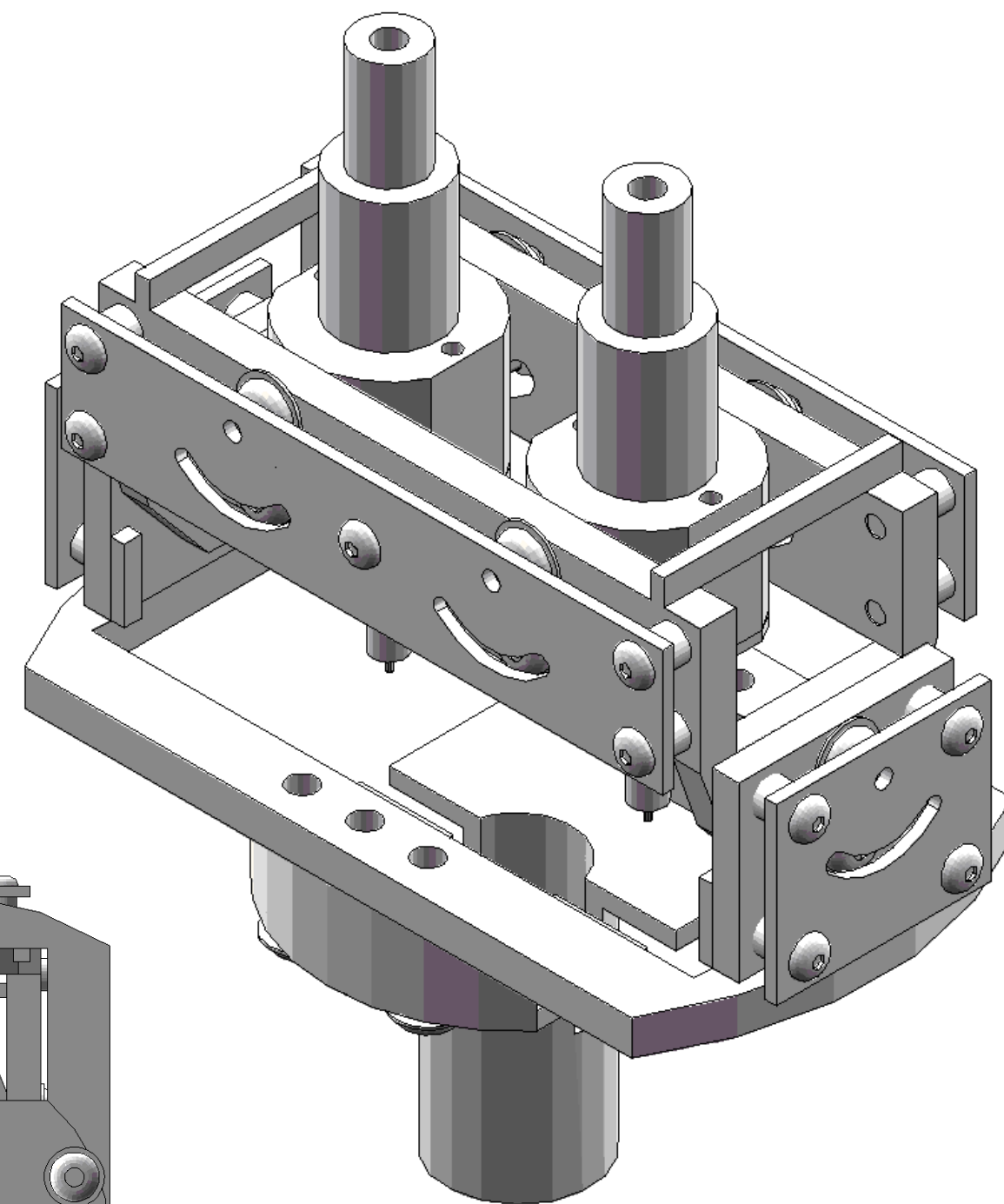
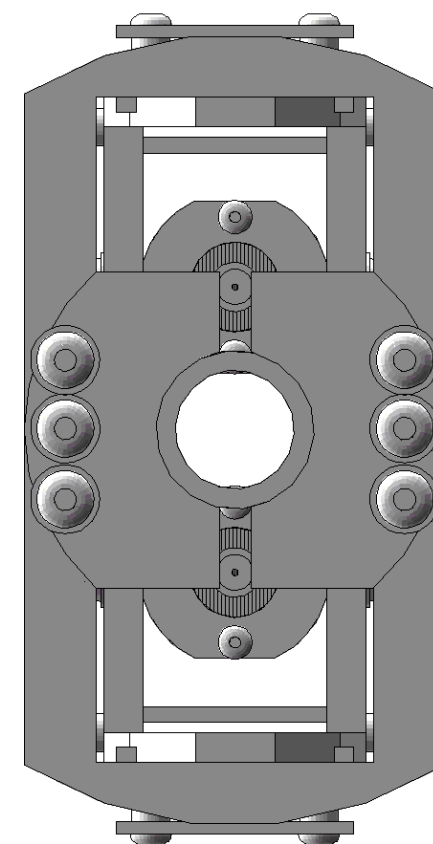
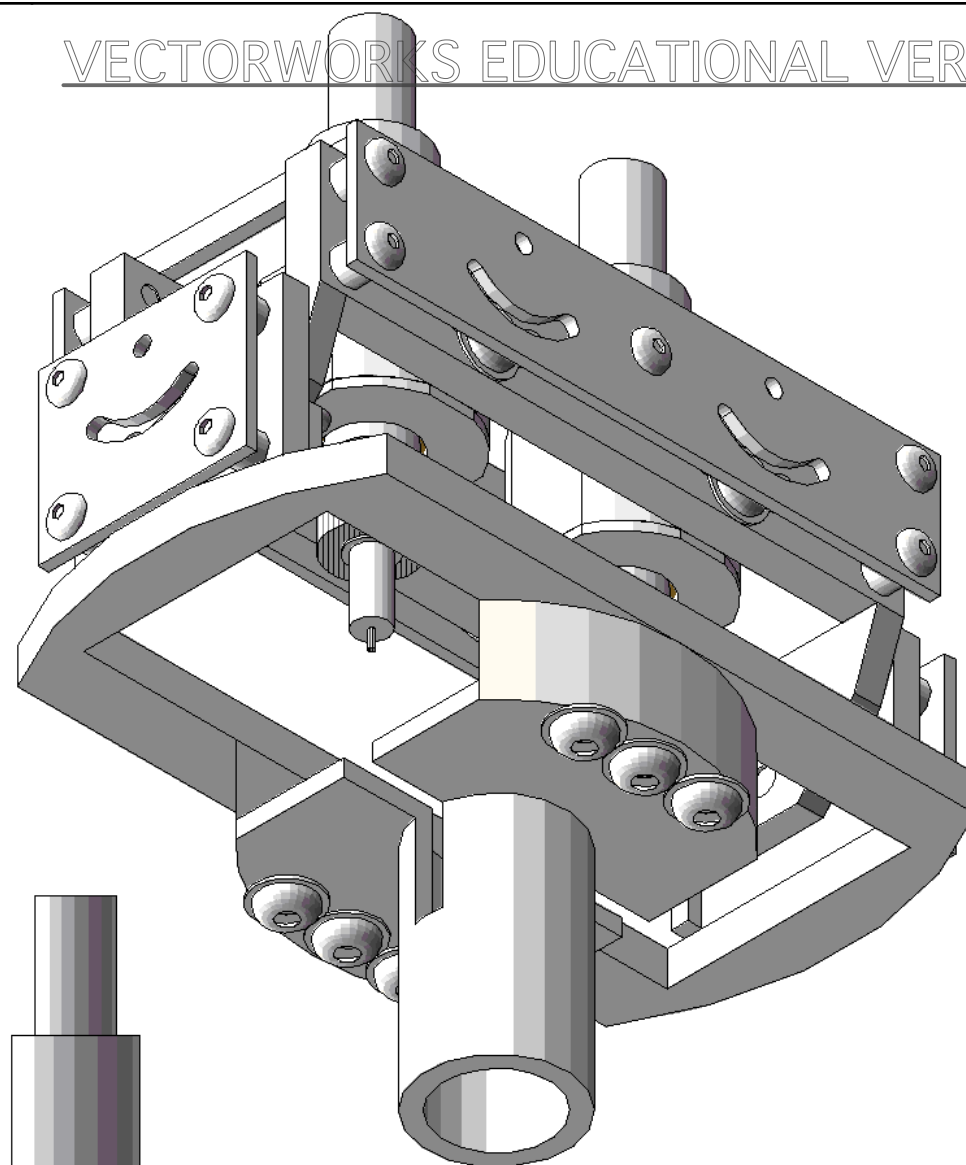
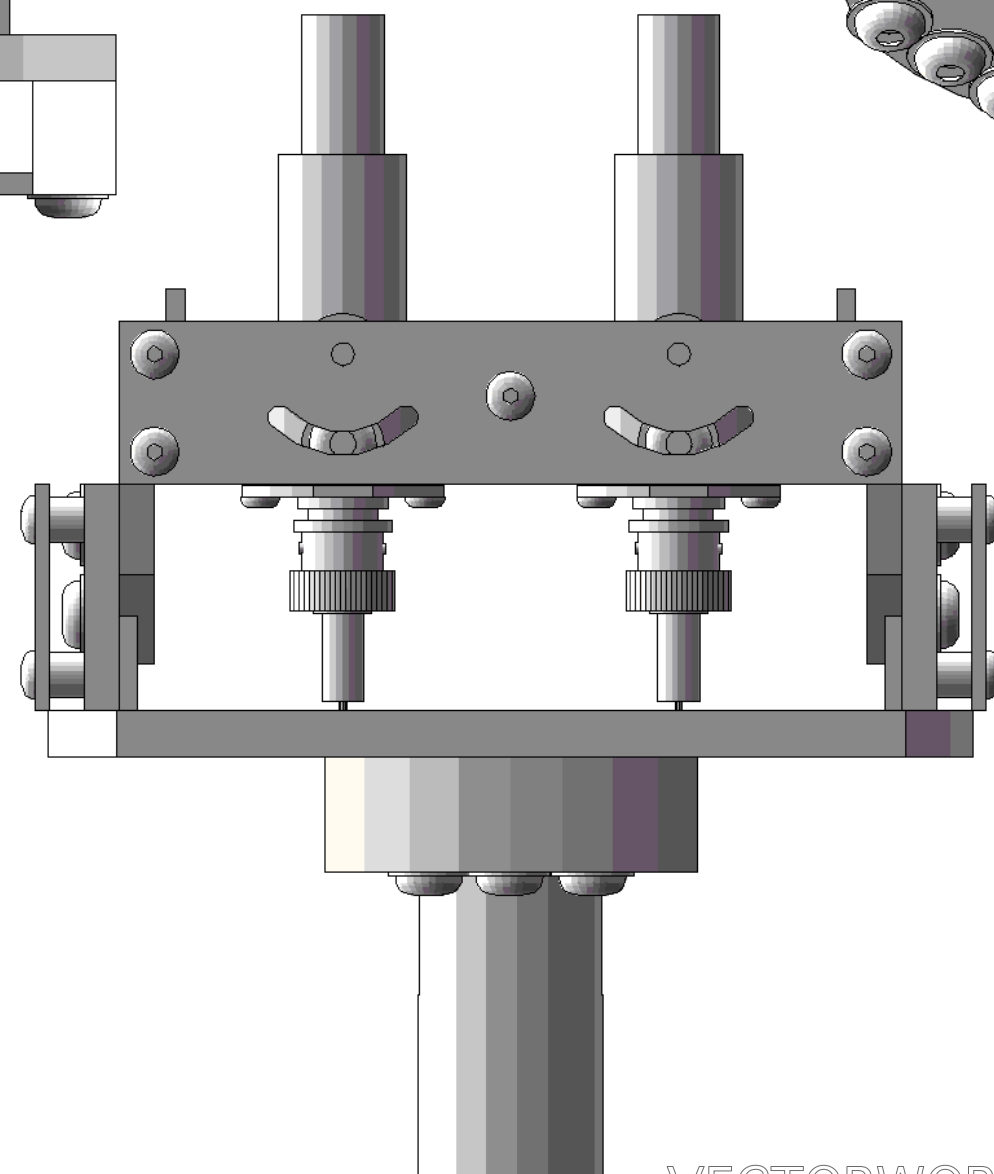
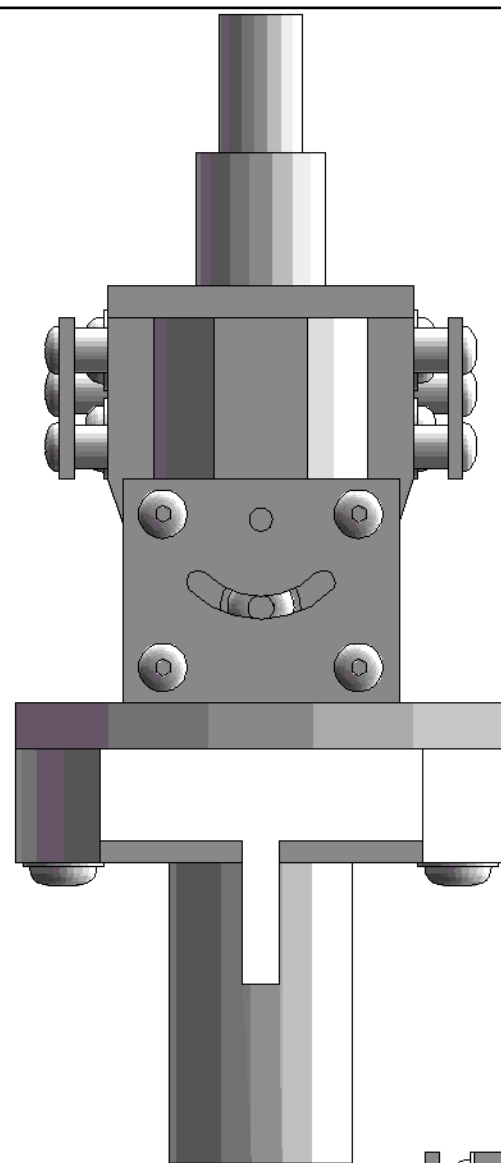
NOTES.

1. ONLY MATERIAL TO BE USED IS STAINLESS STEEL 316.
2. PPPL WILL SILVER PLATE ALL SCREWS.

VECTORWORKS EDUCATIONAL VERSION

REVISION HISTORY

REV	DESCRIPTION	DATE	APPROVED



VECTORWORKS EDUCATIONAL VERSION

FIU FLORIDA INTERNATIONAL UNIVERSITY		DEPARTMENT OF PHYSICS	
11200 SW 8TH ST, MIAMI, FL 33199			
DATE 04/27/11	PROJECT		
SCALE	DIAGNOSTIC DESIGN	SHEET 1 OF 1	
TITLE	MACRO ASSEMBLED VIEW	DRAWN BY	

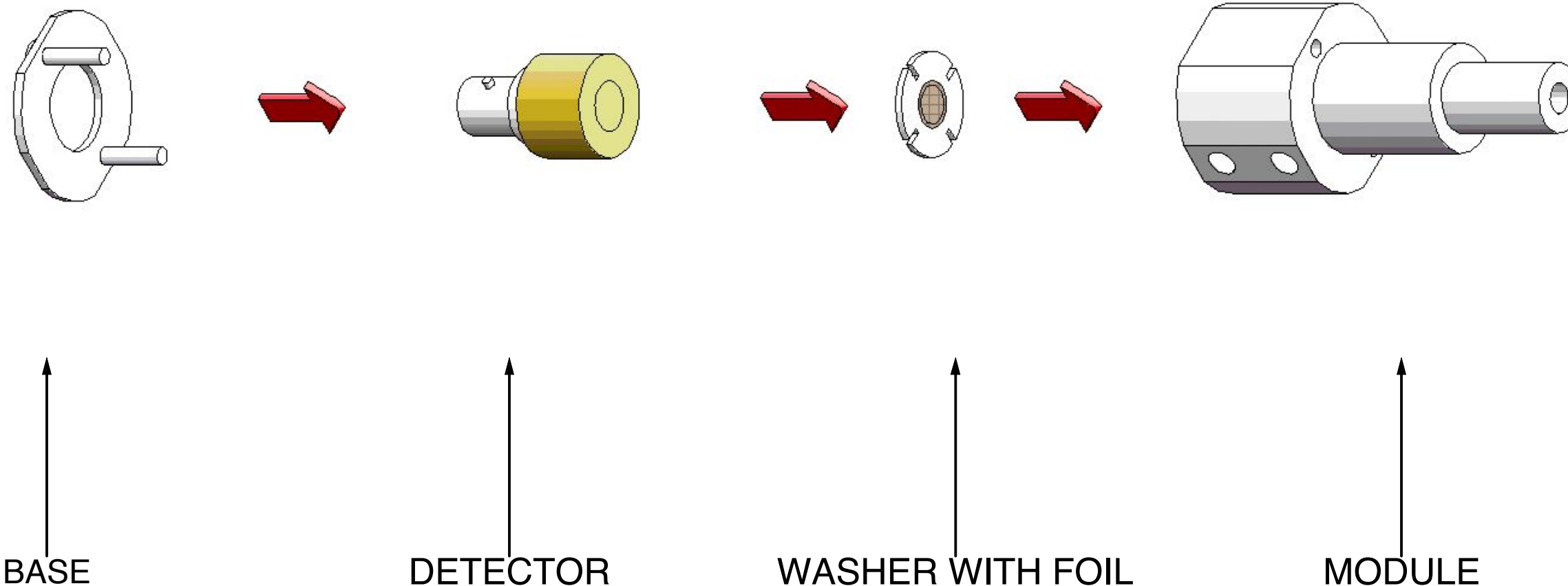
NOTES.

1. ONLY MATERIAL TO BE USED IS STAINLESS STEEL 316.
2. PPPL WILL SILVER PLATE ALL SCREWS.

VECTORWORKS EDUCATIONAL VERSION

REVISION HISTORY

REV	DESCRIPTION	DATE	APPROVED



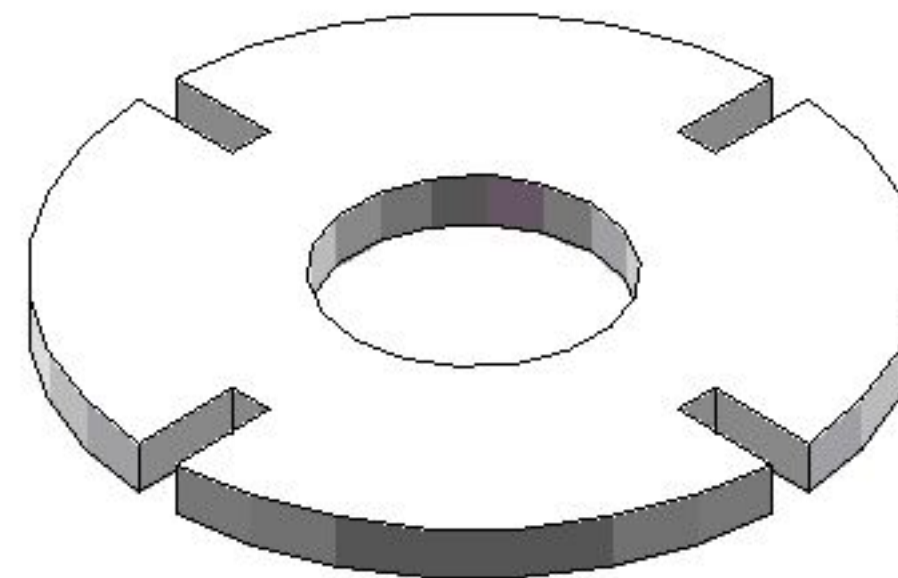
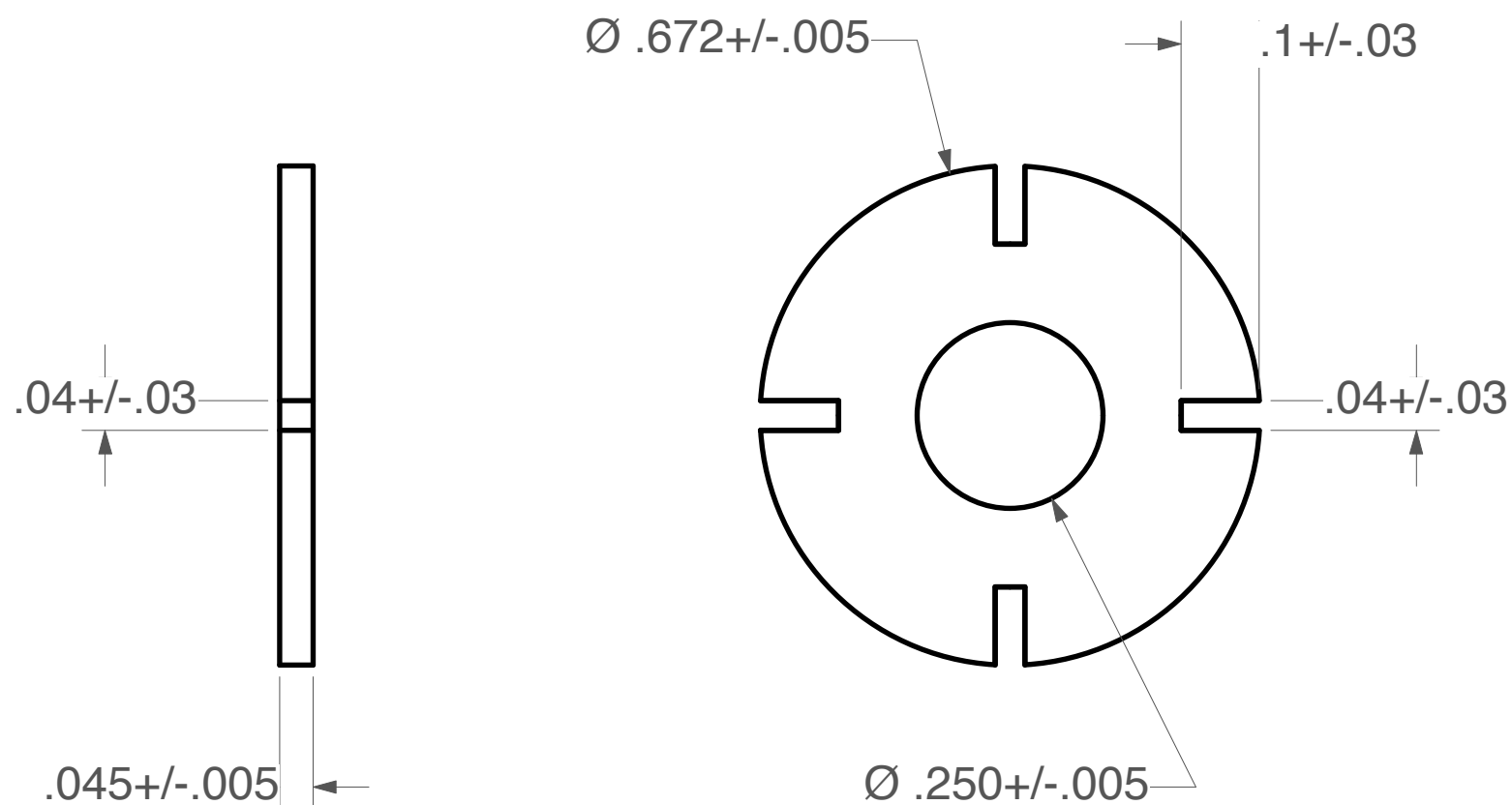
FIU FLORIDA INTERNATIONAL UNIVERSITY DEPARTMENT OF PHYSICS 11200 SW 8TH ST, MIAMI, FL 33199		
DATE 04/27/11	PROJECT	SHEET 1 OF 1
SCALE	DIAGNOSTIC DESIGN	
TITLE	DRAWN BY RAMONA VALENZUELA PEREZ	
MODULE ASSEMBLED VIEW		

VECTORWORKS EDUCATIONAL VERSION

REV	DESCRIPTION	DATE	APPROVED

NOTES.

1. WASHER MADE TO FIT INSIDE MODULE.



ALL DIMENSIONS ARE IN INCHES. TOLERANCES UNLESS OTHERWISE SPECIFIED:

X.XXX +/- .01 < +/- .5



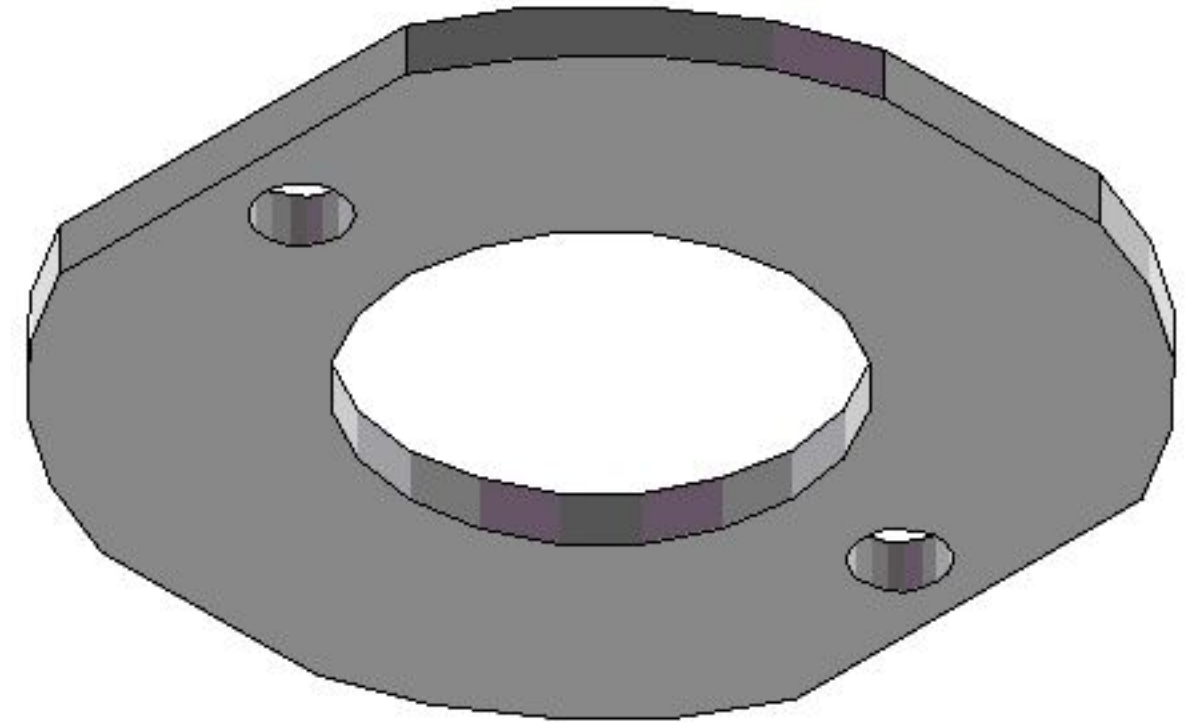
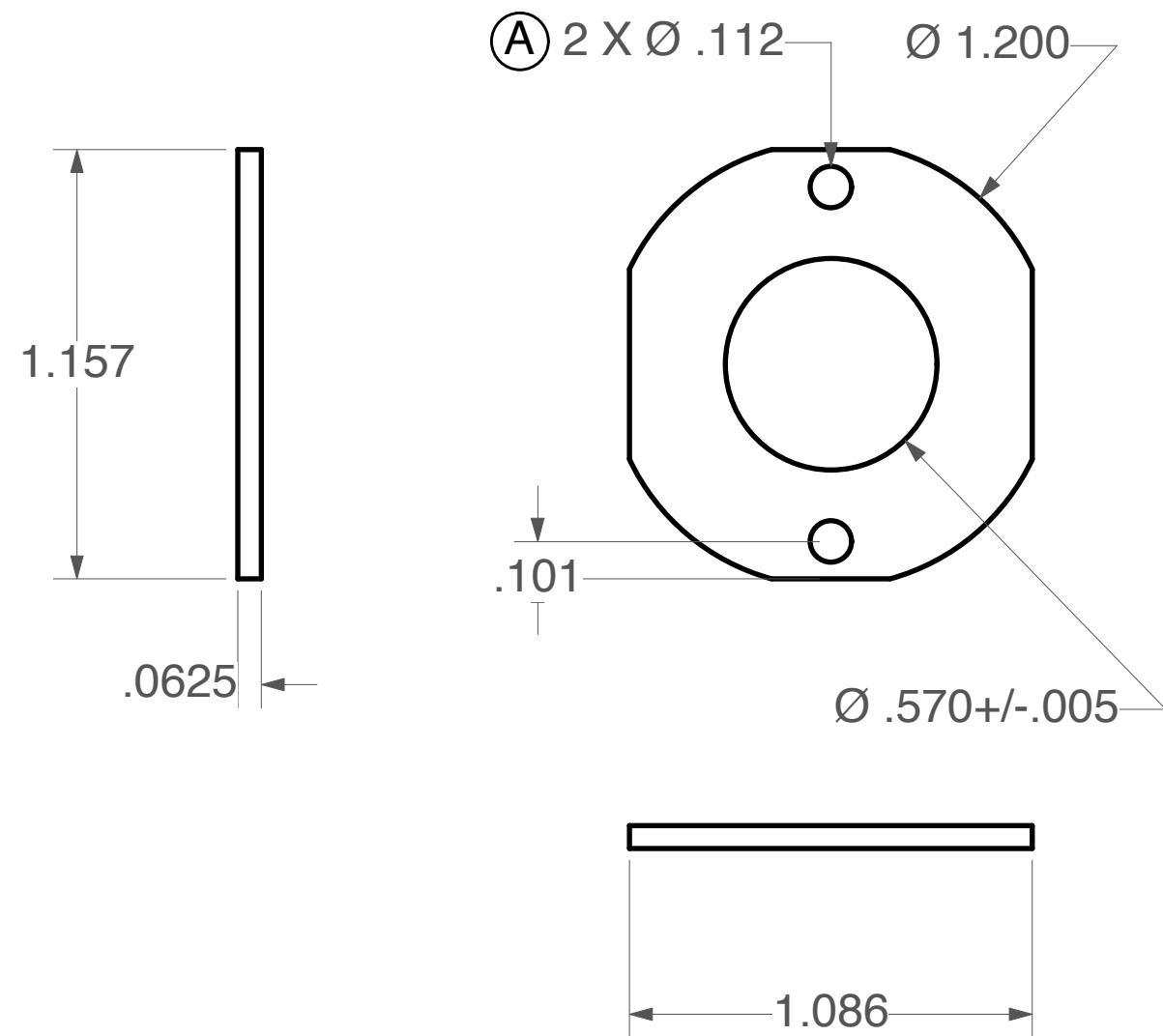
FLORIDA INTERNATIONAL UNIVERSITY
DEPARTMENT OF PHYSICS
11200 SW 8TH ST, MIAMI, FL 33199

DATE 04/27/11	PROJECT DIAGNOSTIC DESIGN	SHEET 1 OF 1
SCALE 4:1	TITLE WASHER FOR FOIL	DRAWN BY RAMONA VALENZUELA PEREZ

NOTES.

1. BASE IS MADE TO FIT TO BOTTOM OF MODULE; ALL BORED HOLES MUST ALIGN WITH BOTTOM OF MODULE.
2. (A) BORE THRU FOR A 4-40 .112 INCH DIAMETER BUTTON HEAD SOCKET CAP SCREW.

REV	DESCRIPTION	DATE	APPROVED



ALL DIMENSIONS ARE IN INCHES. TOLERANCES UNLESS OTHERWISE SPECIFIED:

X.XXX +/- .01 \angle +/- .5



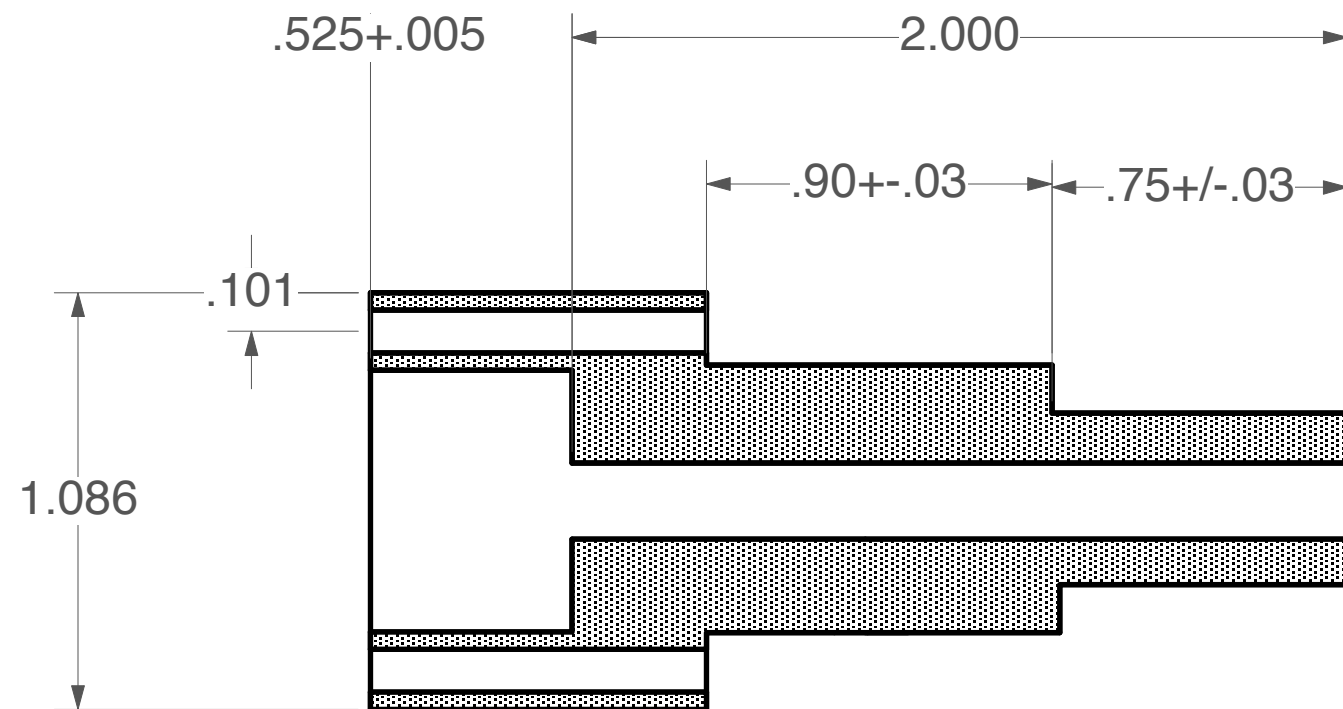
FLORIDA INTERNATIONAL UNIVERSITY
DEPARTMENT OF PHYSICS
11200 SW 8TH ST, MIAMI, FL 33199

DATE 04/27/11	PROJECT DIAGNOSTIC DESIGN	SHEET 1 OF 1
SCALE 2:1	TITLE BASE	DRAWN BY RAMONA VALENZUELA PEREZ

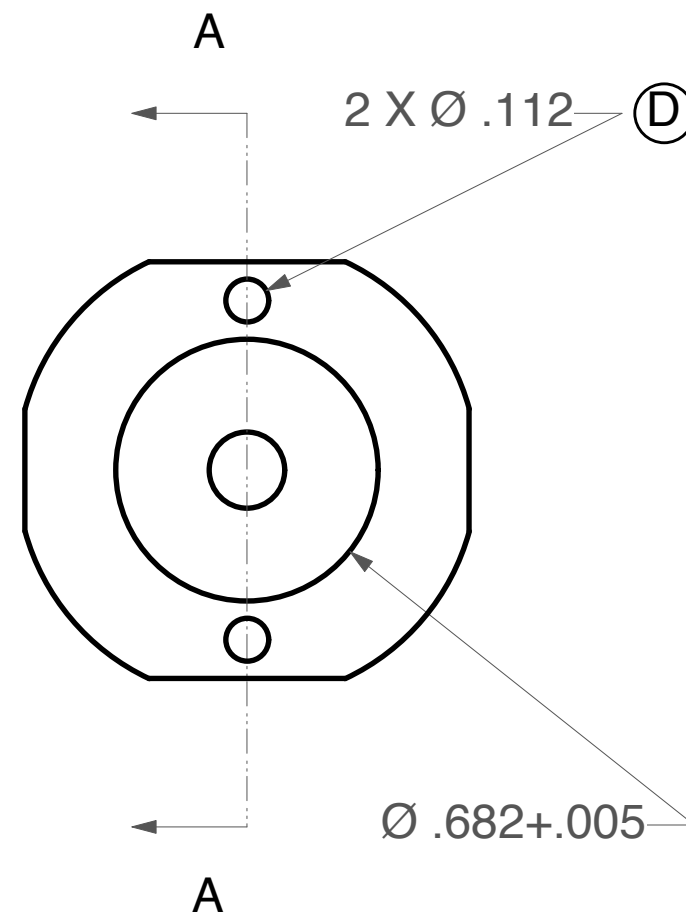
NOTES.

1. BOTTOM OF MODULE IS MADE TO FIT TO BASE, THEREFORE ALL BOTTOM HOLES ALIGN WITH BORED BASE HOLES.
2. (D) TAP THRU FOR A 4-40 .112 INCH DIAMETER BUTTON HEAD SOCKET CAP SCREW.

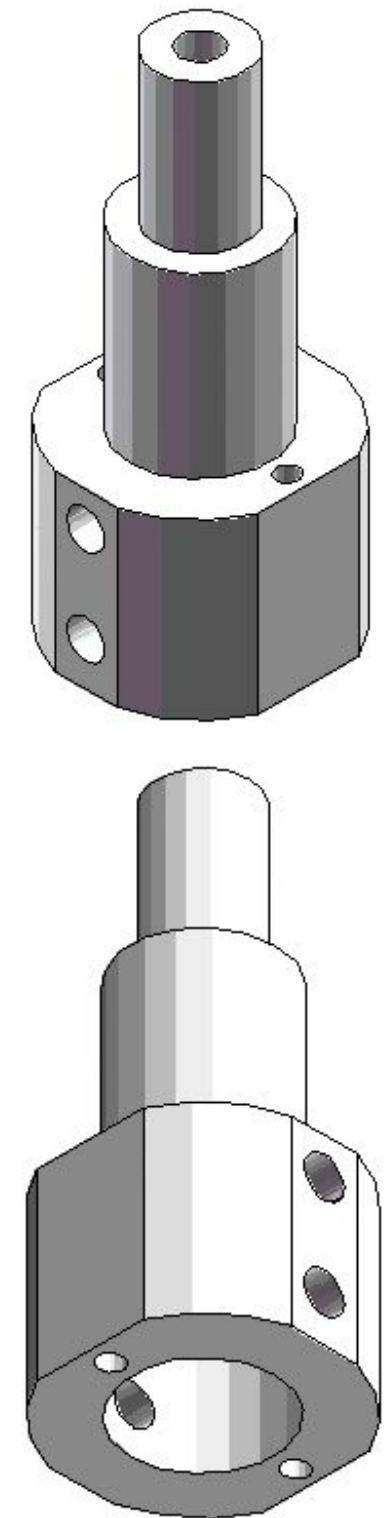
REV	DESCRIPTION	DATE	APPROVED



A SECTIONAL VIEW A



BOTTOM VIEW



ALL DIMENSIONS ARE IN INCHES. TOLERANCES UNLESS OTHERWISE SPECIFIED:

X.XXX +/- .01 \angle +/- .05



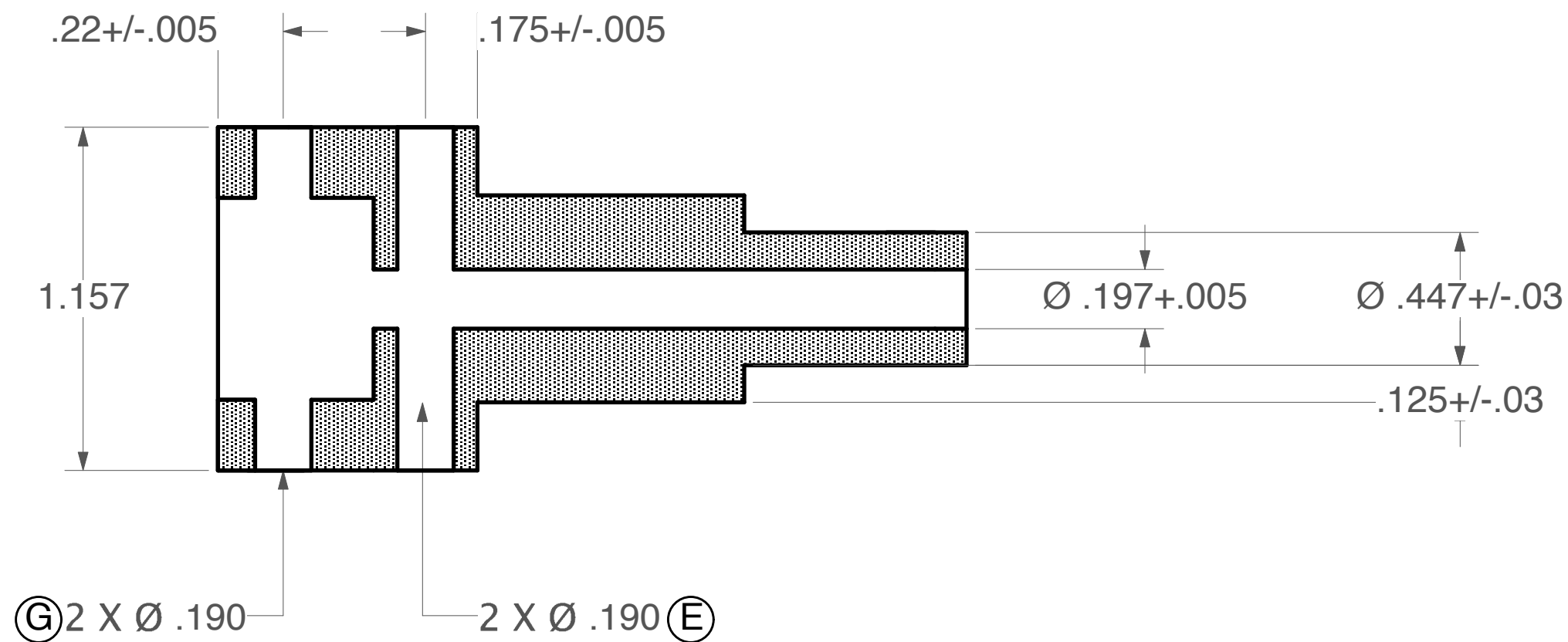
FLORIDA INTERNATIONAL UNIVERSITY
DEPARTMENT OF PHYSICS
11200 SW 8TH ST, MIAMI, FL 33199

DATE 04/27/11	PROJECT DIAGNOSTIC DESIGN	SHEET 1 OF 2
SCALE 1:1	TITLE MODULE	DRAWN BY RAMONA VALENZUELA PEREZ

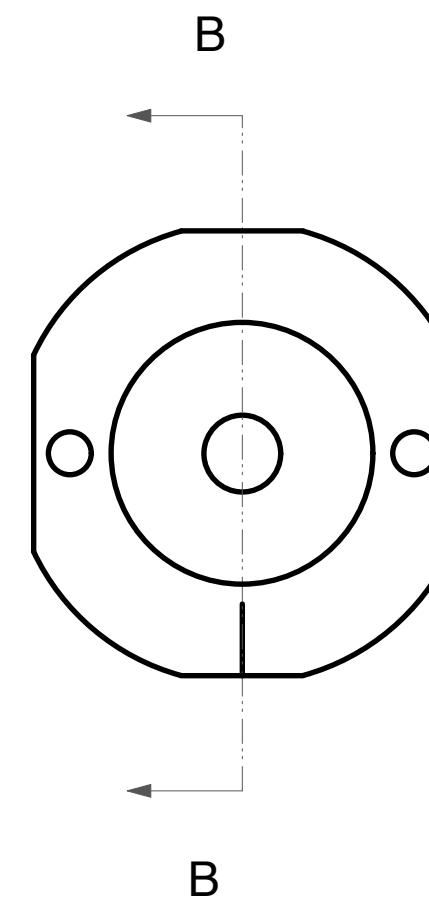
NOTES.

1. BOTTOM OF MODULE IS MADE TO FIT TO BASE, ALL BOTTOM HOLES ALIGN WITH BORED BASE HOLES.
2. (E) TAP THRU FOR A 10-24 SHOULDER SCREW: THREAD LENGTH .375 INCHES, SHOULDER DIAMETER .25 INCHES, SHOULDER LENGTH .25 INCHES.
3. (G) TAP THRU FOR A 10-32 .190 INCH DIAMETER BUTTON HEAD SOCKET CAP SCREW.

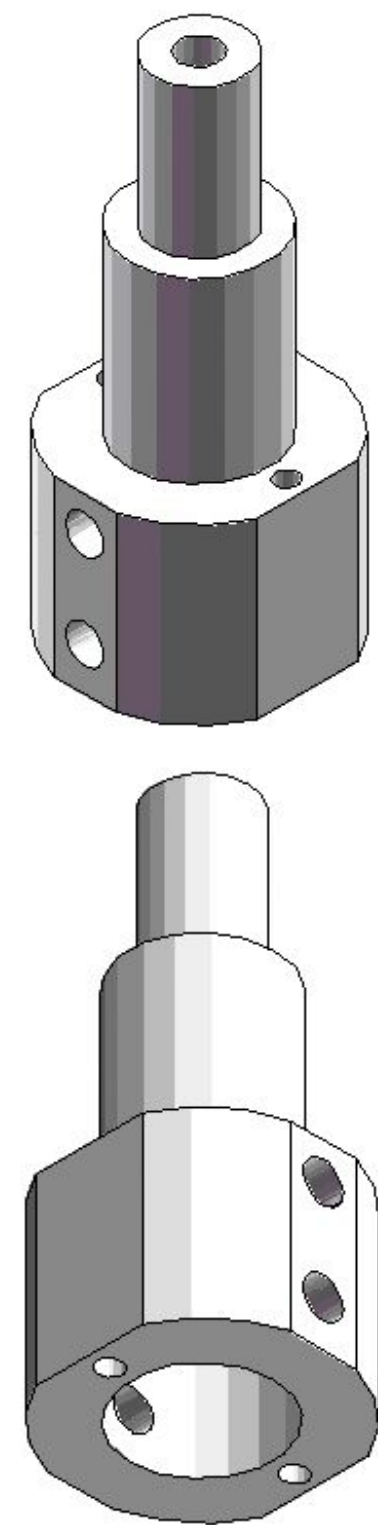
REV	DESCRIPTION	DATE	APPROVED




B SECTIONAL VIEW B



BOTTOM VIEW



ALL DIMENSIONS ARE IN INCHES. TOLERANCES UNLESS OTHERWISE SPECIFIED:
 X.XXX +/- .01 < +/- .5

 FLORIDA INTERNATIONAL UNIVERSITY DEPARTMENT OF PHYSICS 11200 SW 8TH ST, MIAMI, FL 33199	DATE 04/27/11	PROJECT	SHEET 2 OF 2
	SCALE 1:1	DIAGNOSTIC DESIGN	
TITLE	MODULE		DRAWN BY RAMONA VALENZUELA PEREZ

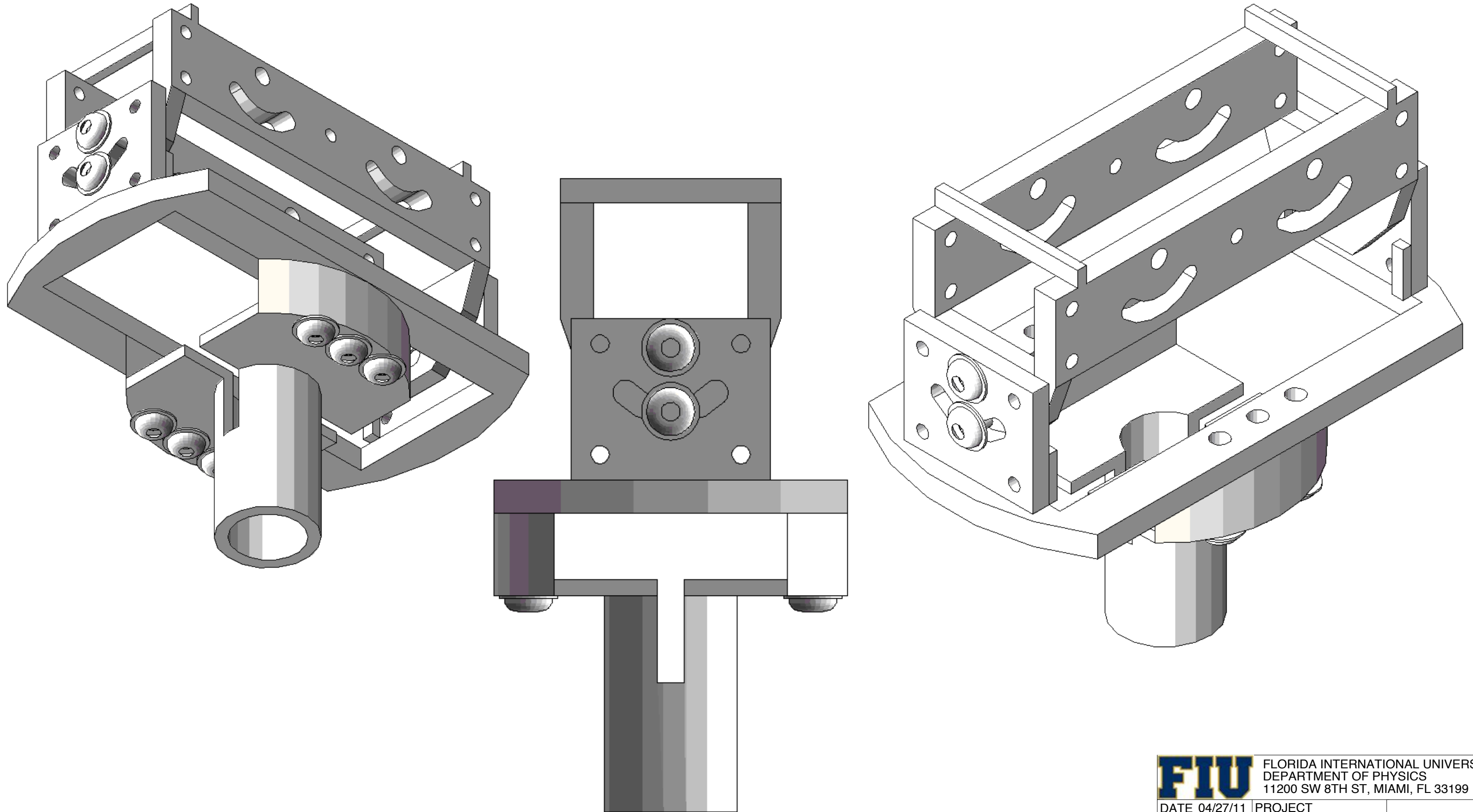
NOTES.

1. ONLY MATERIAL TO BE USED IS STAINLESS STEEL 316.
2. PPPL WILL SILVER PLATE ALL SCREWS.


VECTORWORKS EDUCATIONAL VERSION

REVISION HISTORY

REV	DESCRIPTION	DATE	APPROVED



VECTORWORKS EDUCATIONAL VERSION

 FLORIDA INTERNATIONAL UNIVERSITY DEPARTMENT OF PHYSICS 11200 SW 8TH ST, MIAMI, FL 33199		
DATE 04/27/11	PROJECT	SHEET 1 OF 1
SCALE	DIAGNOSTIC DESIGN	
TITLE		DRAWN BY
ASSEMBLED MOUNTS		RAMONA VALENZUELA PEREZ

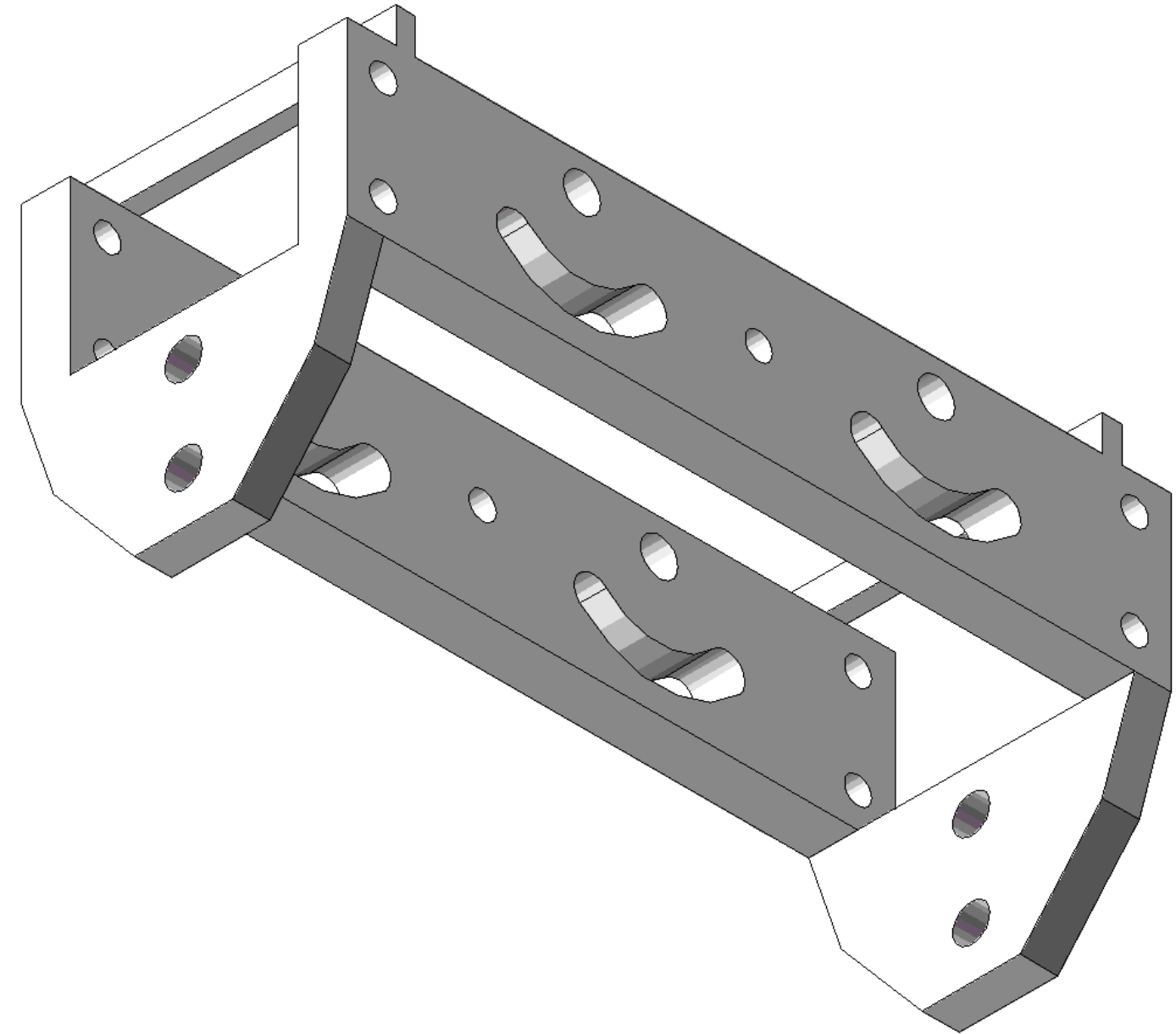
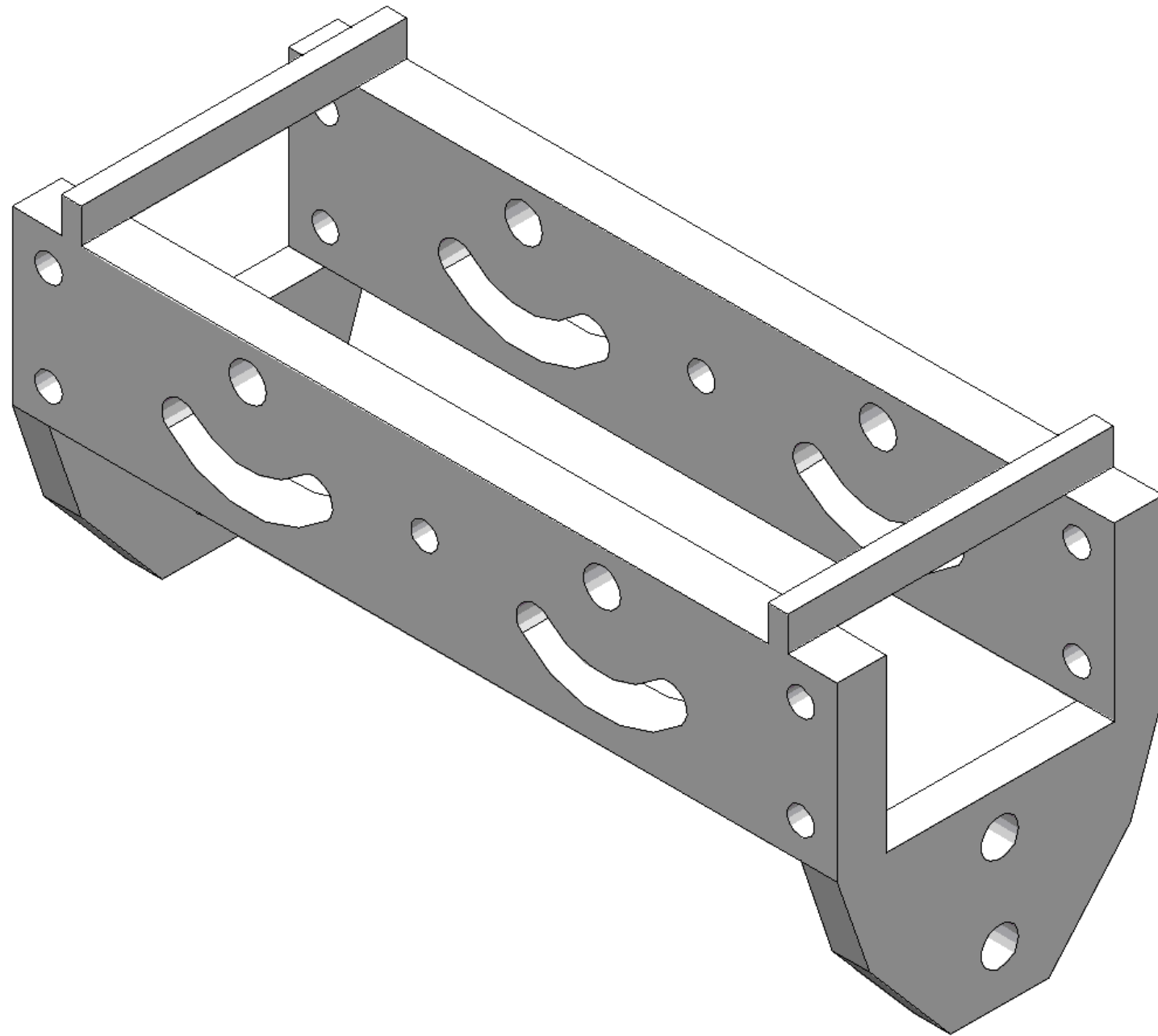
NOTES.

- 1. ONLY MATERIAL TO BE USED IS STAINLESS STEEL 316.
- 2. PPPL WILL SILVER PLATE ALL SCREWS.


VECTORWORKS EDUCATIONAL VERSION

REVISION HISTORY

REV	DESCRIPTION	DATE	APPROVED



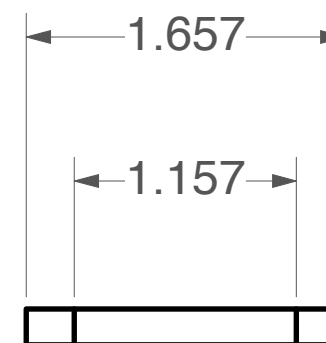
VECTORWORKS EDUCATIONAL VERSION

 FLORIDA INTERNATIONAL UNIVERSITY DEPARTMENT OF PHYSICS 11200 SW 8TH ST, MIAMI, FL 33199		
DATE 04/27/11	PROJECT	SHEET 1 OF 1
SCALE	DIAGNOSTIC DESIGN	
TITLE	DRAWN BY	
ASSEMBLED MOUNTS	RAMONA VALENZUELA PEREZ	

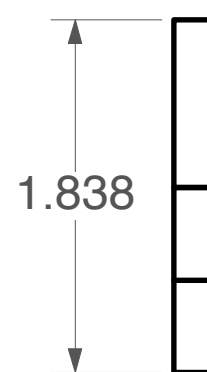
REV	DESCRIPTION	DATE	APPROVED

NOTES.

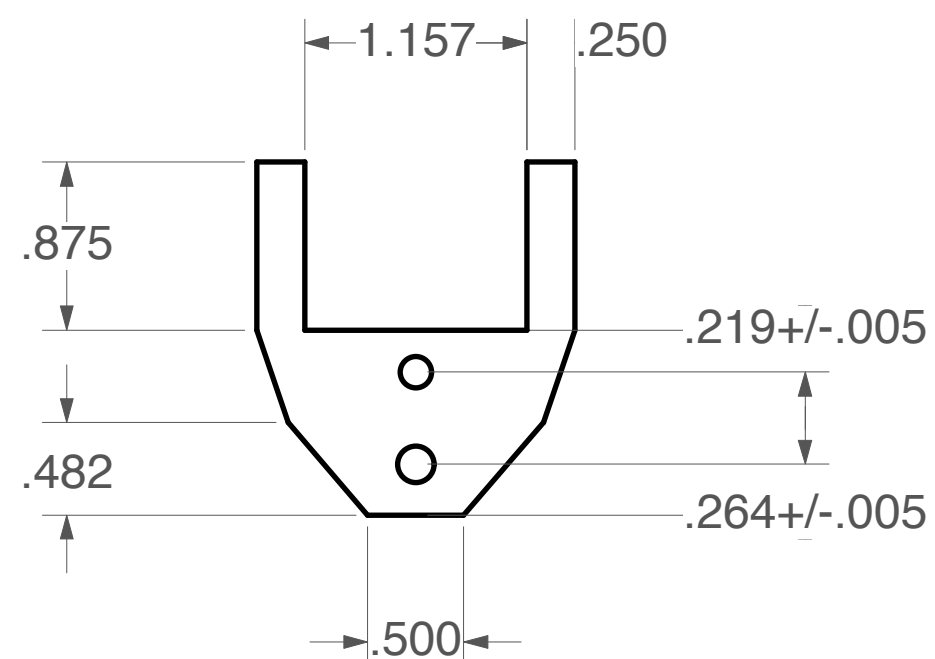
1. MOUNT PIECE 1 IS MADE TO FIT TO MOUNT PIECE 2 AND THE MODULE; CORRESPONDING HOLES SHOULD ALIGN.
2. 2 X THIS MOUNT 1A ARE NEEDED.
3. (A) TAP THRU FOR A 10-32 .190 INCH DIAMETER BUTTON HEAD SOCKET CAP SCREW.
4. (B) TAP THRU FOR A 8-32 SHOULDER SCREW: THREAD LENGTH .1875 INCHES, SHOULDER DIAMETER .1875 INCHES, SHOULDER LENGTH 1875 INCHES.



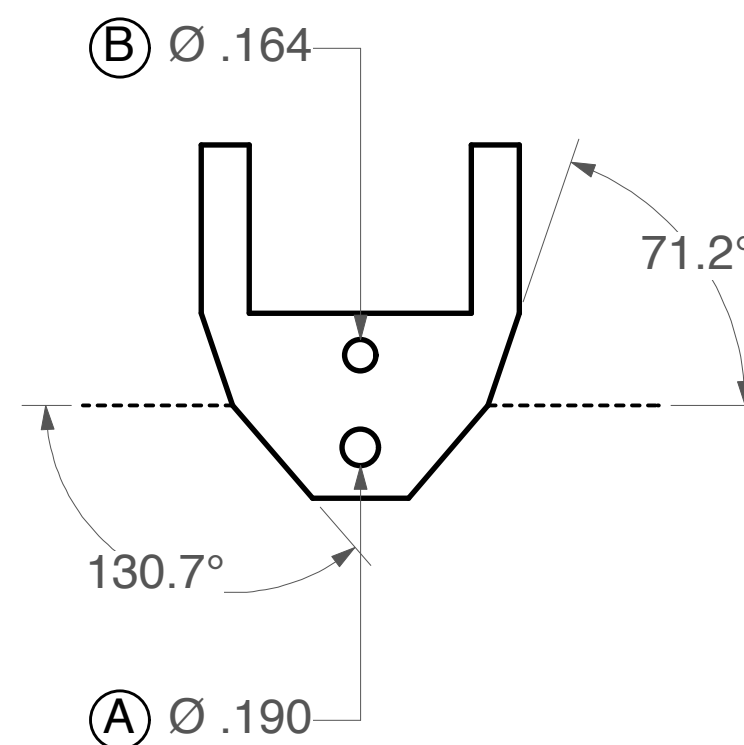
TOP VIEW



SIDE VIEW



FRONT VIEW



FRONT VIEW

ALL DIMENSIONS ARE IN INCHES. TOLERANCES UNLESS OTHERWISE SPECIFIED:

X.XXX +/- .01 < +/- .5



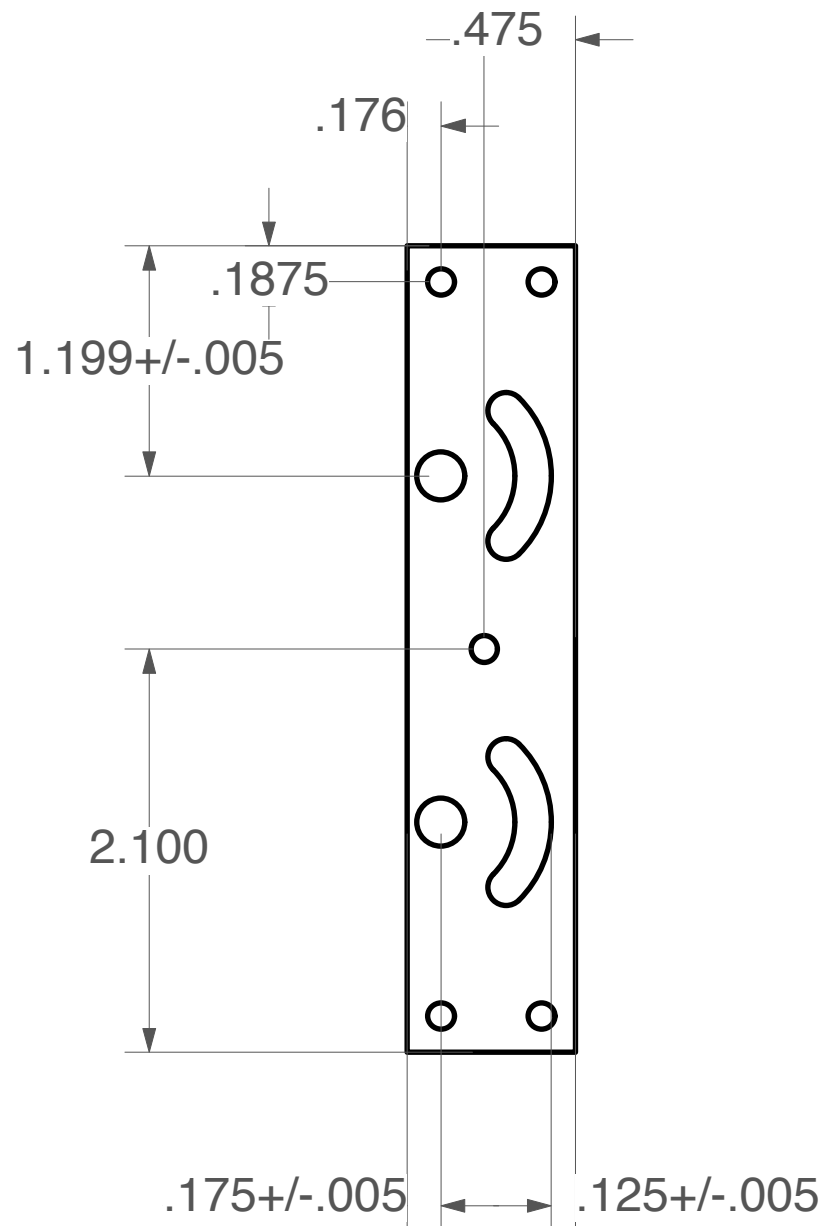
FLORIDA INTERNATIONAL UNIVERSITY
DEPARTMENT OF PHYSICS
11200 SW 8TH ST, MIAMI, FL 33199

DATE 04/27/11	PROJECT DIAGNOSTIC DESIGN	SHEET 1 OF 3
SCALE 1:1	TITLE MOUNT PIECE 1	DRAWN BY RAMONA VALENZUELA PEREZ

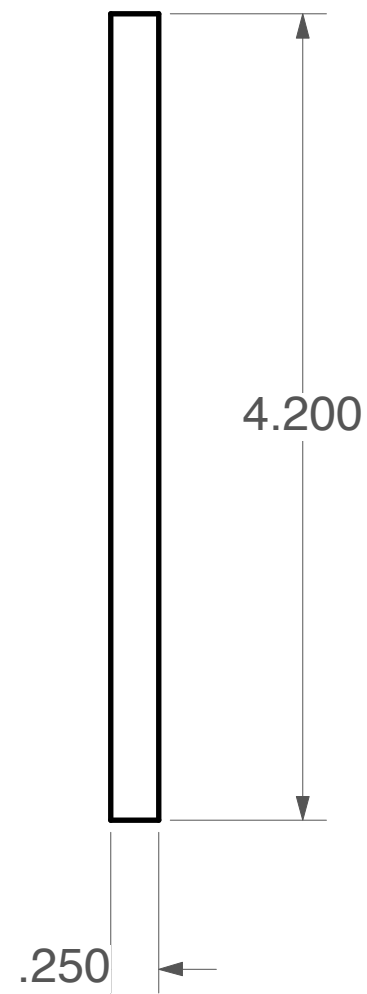
NOTES.

1. MOUNT PIECE 1 IS MADE TO FIT TO MOUNT PIECE 2 AND THE MODULE; CORRESPONDING HOLES SHOULD ALIGN.
2. 2 X MOUNT 1B ARE NEEDED.
3. (A) CREATE ARC ANGLE TO FIT A 10-32 .190 INCH DIAMETER BUTTON HEAD SOCKET CAP SCREW.
4. (B) TAP THRU FOR A 6-32 .138 INCH DIAMETER BUTTON HEAD SOCKET CAP SCREW.
5. (C) BORE THRU FOR A 10-24 .190 INCH DIAMETER SHOULDER SCREW: SHOULDER DIAMETER .25 INCHES, SHOULDER LENGTH .3125 INCHES.

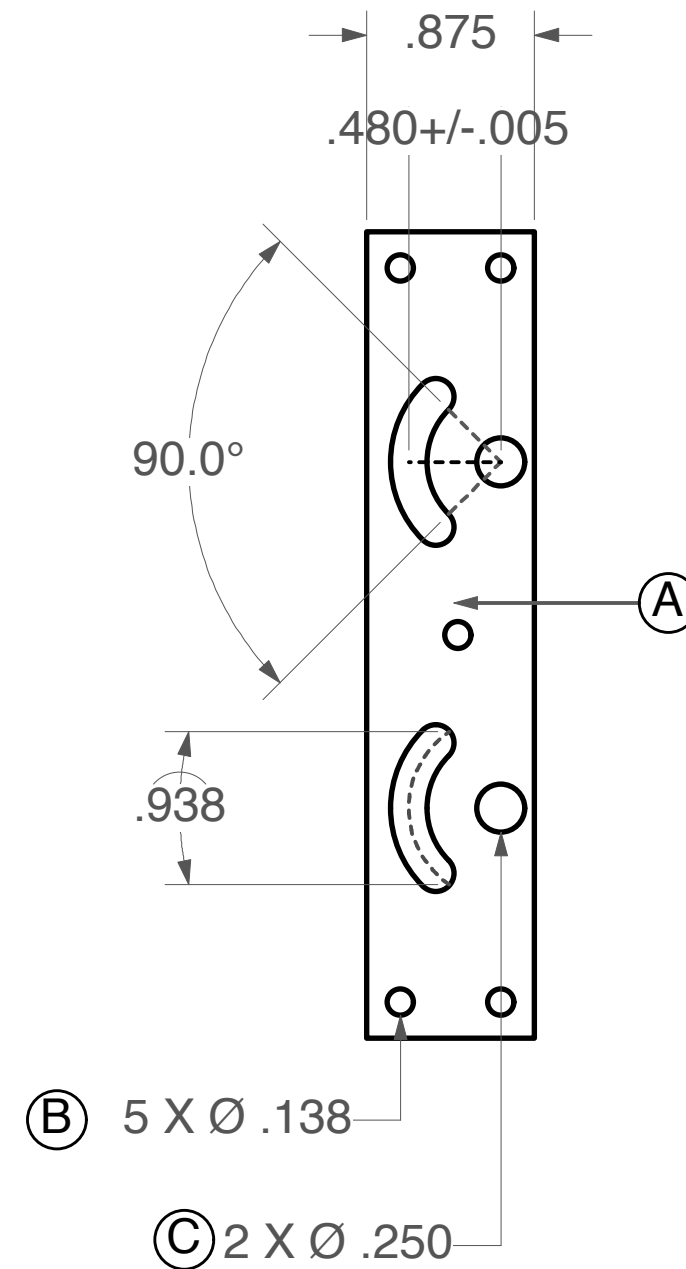
REV	DESCRIPTION	DATE	APPROVED



SIDE VIEW



FRONT VIEW



SIDE VIEW

ALL DIMENSIONS ARE IN INCHES. TOLERANCES UNLESS OTHERWISE SPECIFIED:

X.XXX +/- .01 < +/- .5



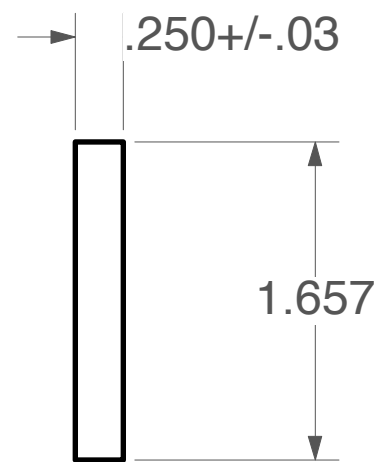
FLORIDA INTERNATIONAL UNIVERSITY
DEPARTMENT OF PHYSICS
11200 SW 8TH ST, MIAMI, FL 33199

DATE 04/27/11	PROJECT DIAGNOSTIC DESIGN	SHEET 2 OF 3
SCALE 1:1	TITLE MOUNT PIECE 1	DRAWN BY RAMONA VALENZUELA PEREZ

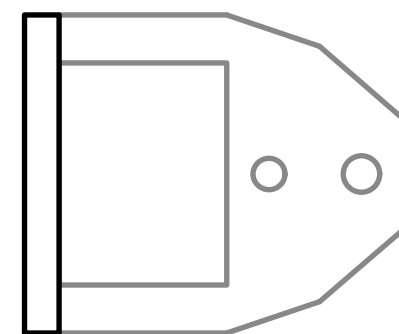
REV	DESCRIPTION	DATE	APPROVED

NOTES.

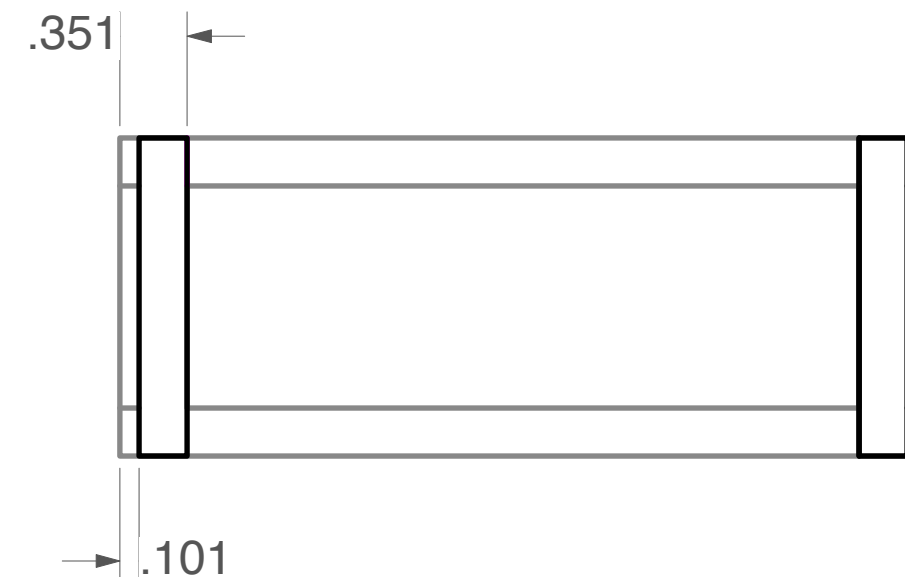
1. MOUNT PIECE 1 IS MADE TO FIT TO MOUNT PIECE 2 AND THE MODULE; CORRESPONDING HOLES SHOULD ALIGN.
2. 2 X MOUNT 1C ARE NEEDED.



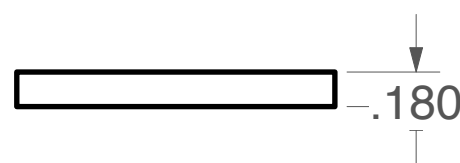
TOP VIEW



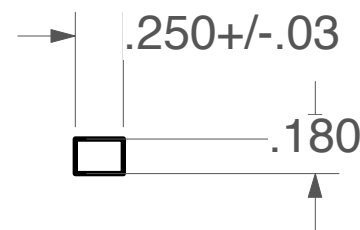
SIDE VIEW WELDED TO MOUNT 1A



TOP VIEW WELDED TO MOUNT 1B



SIDE VIEW



FRONT VIEW

ALL DIMENSIONS ARE IN INCHES. TOLERANCES UNLESS OTHERWISE SPECIFIED:

X.XXX +/- .01 \angle +/- .05



FLORIDA INTERNATIONAL UNIVERSITY
DEPARTMENT OF PHYSICS
11200 SW 8TH ST, MIAMI, FL 33199

DATE 04/27/11	PROJECT DIAGNOSTIC DESIGN	SHEET 3 OF 3
SCALE 1:1	TITLE MOUNT PIECE 1	DRAWN BY RAMONA VALENZUELA PEREZ

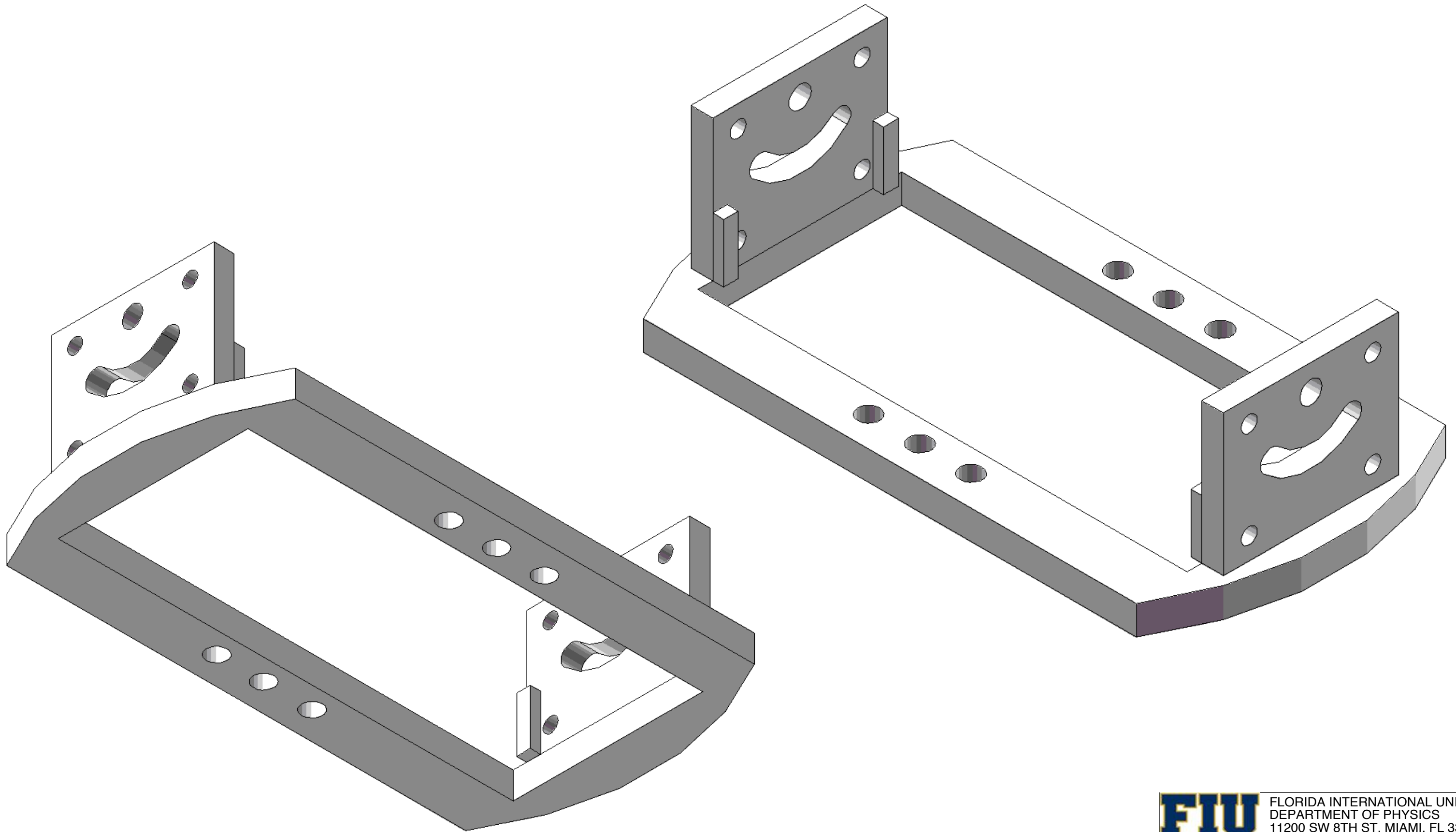
NOTES.

1. ONLY MATERIAL TO BE USED IS STAINLESS STEEL 316.
2. PPPL WILL SILVER PLATE ALL SCREWS.

VECTORWORKS EDUCATIONAL VERSION

REVISION HISTORY

REV	DESCRIPTION	DATE	APPROVED



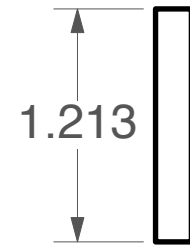
VECTORWORKS EDUCATIONAL VERSION

FIU		FLORIDA INTERNATIONAL UNIVERSITY DEPARTMENT OF PHYSICS 11200 SW 8TH ST, MIAMI, FL 33199	
DATE 04/27/11	PROJECT	SHEET 1 OF 1	
SCALE	DIAGNOSTIC DESIGN		
TITLE	ASSEMBLED MOUNTS	DRAWN BY RAMONA VALENZUELA PEREZ	

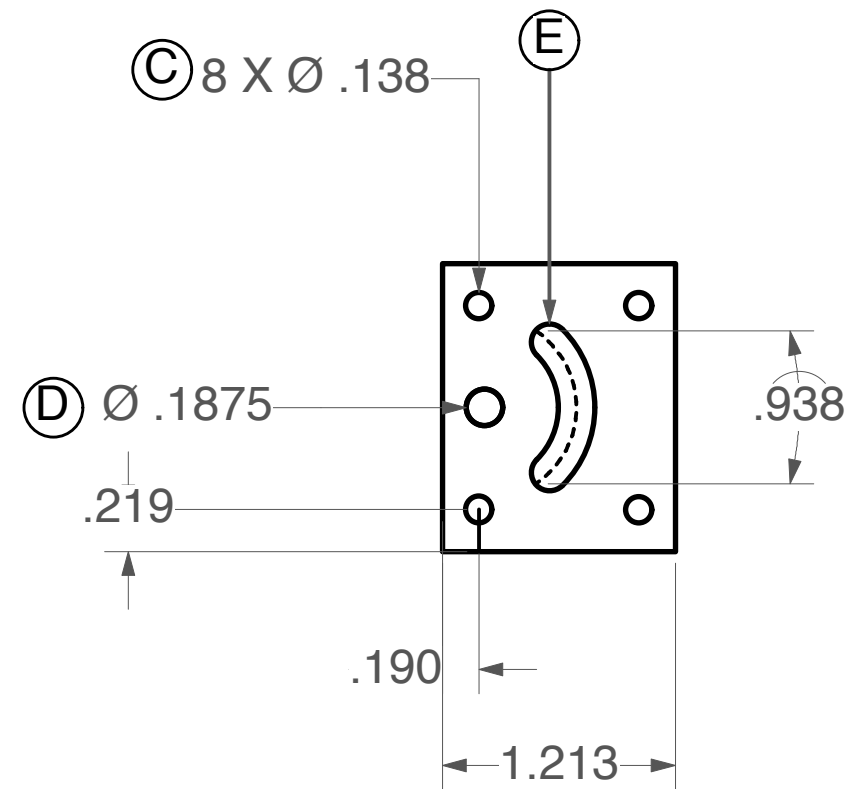
NOTES.

1. MOUNT PIECE 2 IS MADE TO FIT TO MOUNT PIECE 1 AND MOUNT PIECE 3;
CORRESPONDING HOLES SHOULD ALIGN.
2. 2 X MOUNT 2A ARE NEEDED.
3. (C) TAP THRU FOR A 6-32 .138 INCH DIAMETER BUTTON HEAD SOCKET CAP SCREW.
4. (D) BORE THRU FOR A 8-32 SHOULDER SCREW: SHOULDER DIAMTER .1875 INCHES,
SHOULDER LENGTH .1875 INCHES.
5. (E) CREATE ARC ANGLE TO FIT A 10-32 .190 INCH DIAMETER MACHINE SCREW.

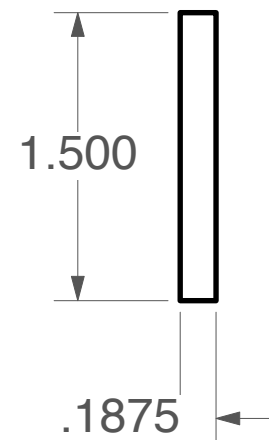
REV	DESCRIPTION	DATE	APPROVED



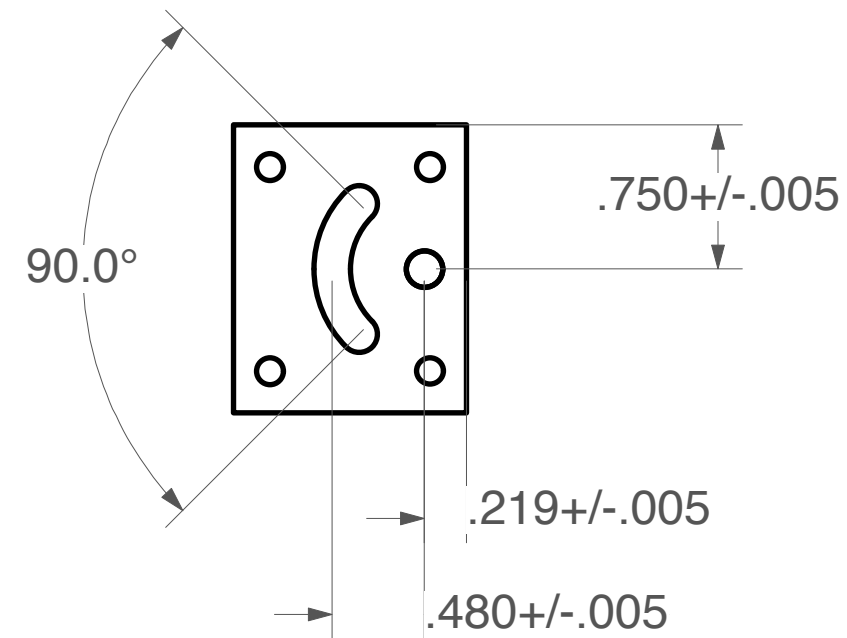
TOP VIEW



SIDE VIEW



FRONT VIEW



SIDE VIEW

ALL DIMENSIONS ARE IN INCHES.
TOLERANCES UNLESS OTHERWISE SPECIFIED:

X.XXX +/- .01 \angle +/- .5



FLORIDA INTERNATIONAL UNIVERSITY
DEPARTMENT OF PHYSICS
11200 SW 8TH ST, MIAMI, FL 33199

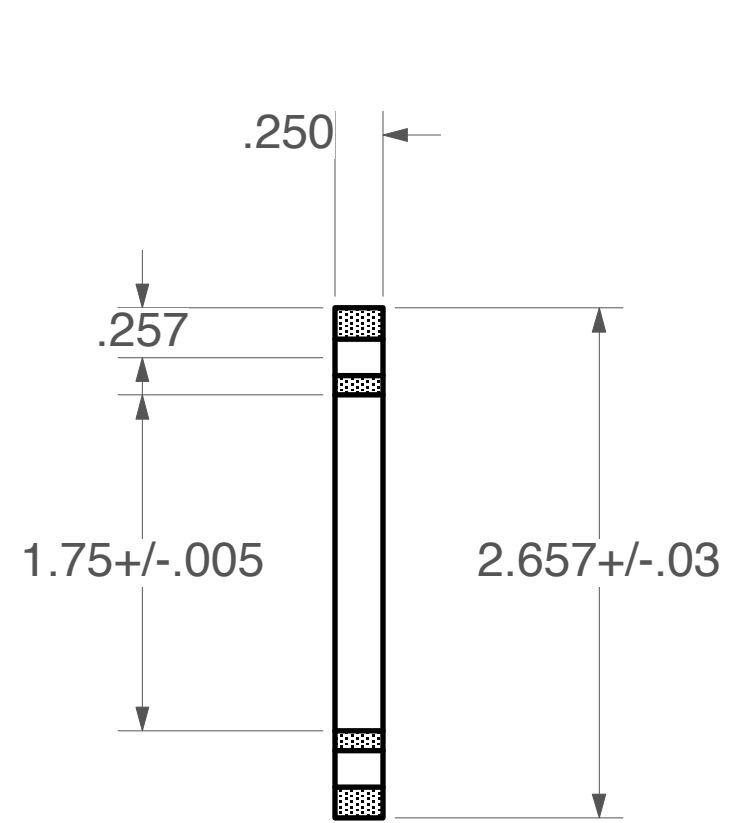
DATE 04/27/11	PROJECT DIAGNOSTIC DESIGN	SHEET 1 OF 3
---------------	---------------------------	--------------

TITLE MOUNT PIECE 2	DRAWN BY RAMONA VALENZUELA PEREZ
---------------------	----------------------------------

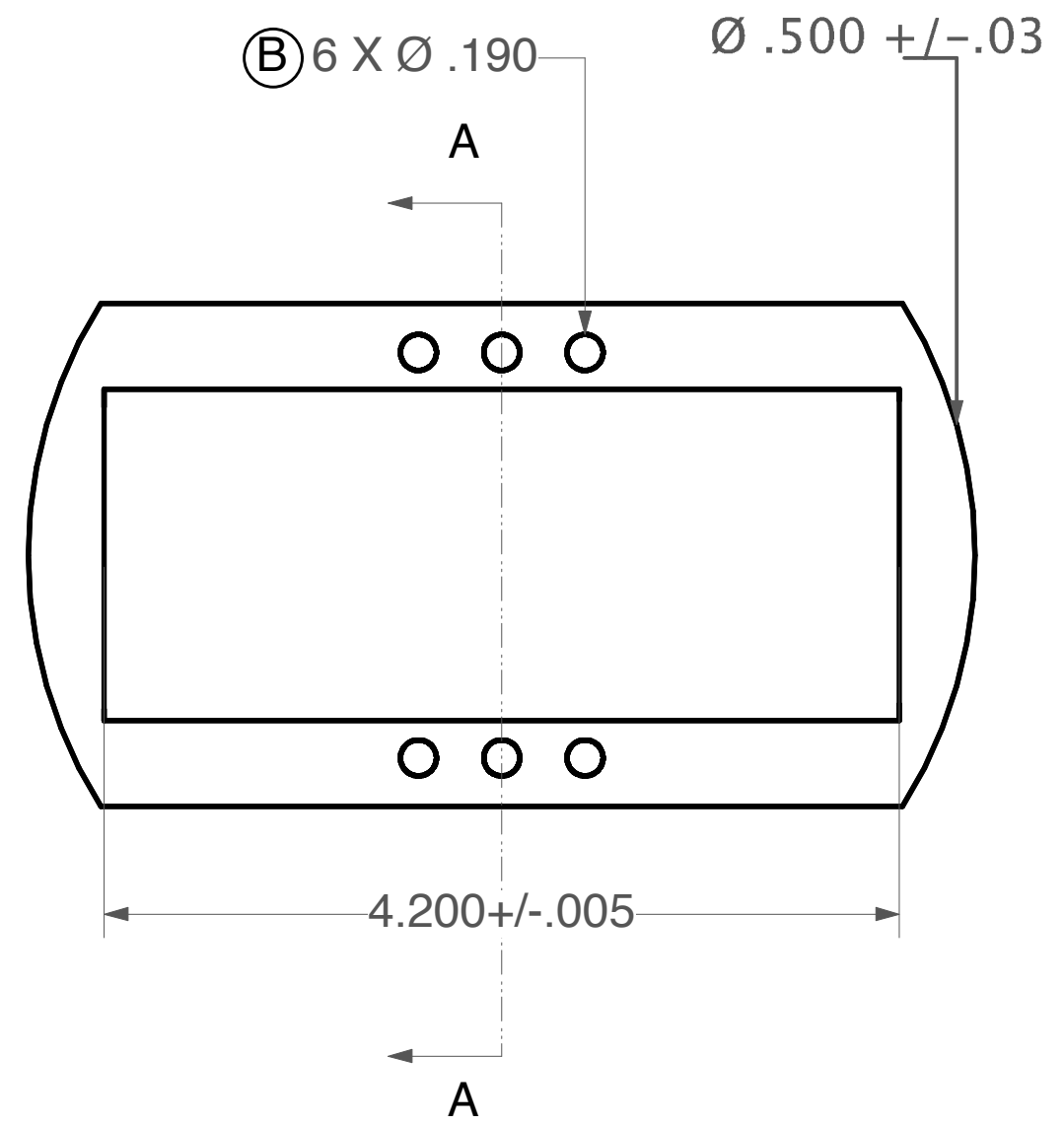
NOTES.

1. MOUNT PIECE 2 IS MADE TO FIT TO MOUNT PIECE 1 AND MOUNT PIECE 3; CORRESPONDING HOLES SHOULD ALIGN.
2. (B) TAP THRU FOR A 10-32 .190 INCH DIAMETER BUTTON HEAD SOCKET CAP SCREW.

REV	DESCRIPTION	DATE	APPROVED



A SECTIONAL VIEW A



TOP VIEW

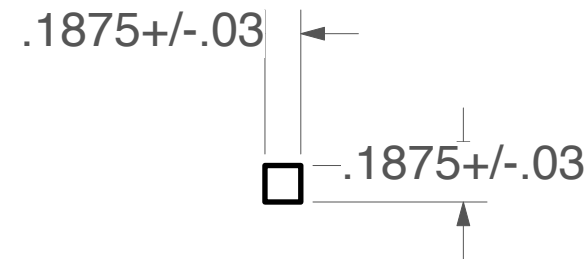
ALL DIMENSIONS ARE IN INCHES.
TOLERANCES UNLESS OTHERWISE SPECIFIED:
X.XXX +/- .01 < +/- .05

FIU	FLORIDA INTERNATIONAL UNIVERSITY DEPARTMENT OF PHYSICS 11200 SW 8TH ST, MIAMI, FL 33199		
	DATE 04/27/11	PROJECT DIAGNOSTIC DESIGN	SHEET 2 OF 3
SCALE 1:1	TITLE MOUNT PIECE 2		DRAWN BY RAMONA VALENZUELA PEREZ

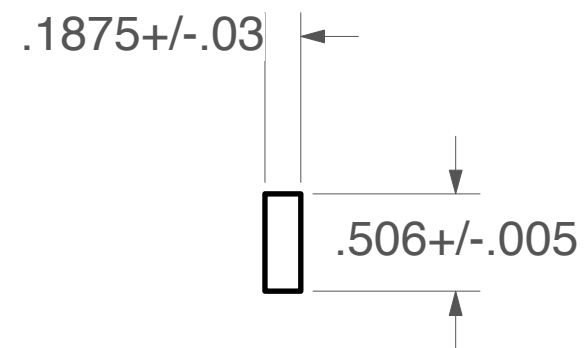
NOTES.

1. MOUNT PIECE 2 IS MADE TO FIT TO MOUNT PIECE 1 AND MOUNT PIECE 3; CORRESPONDING HOLES SHOULD ALIGN.
2. 4 X MOUNT 2C ARE NEEDED.

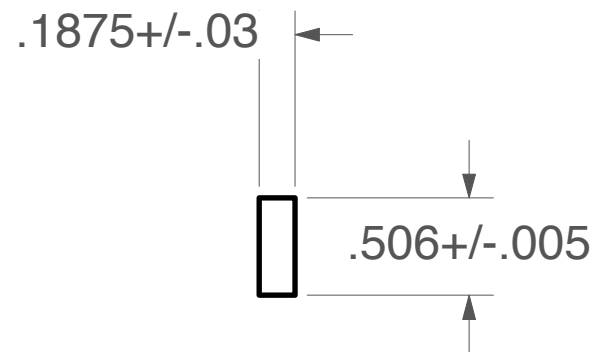
REV	DESCRIPTION	DATE	APPROVED



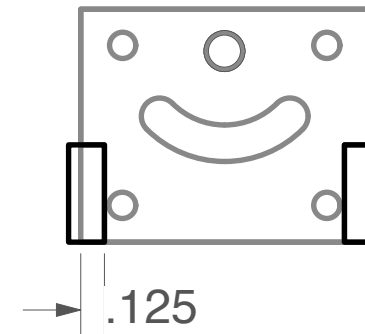
TOP VIEW



FRONT VIEW



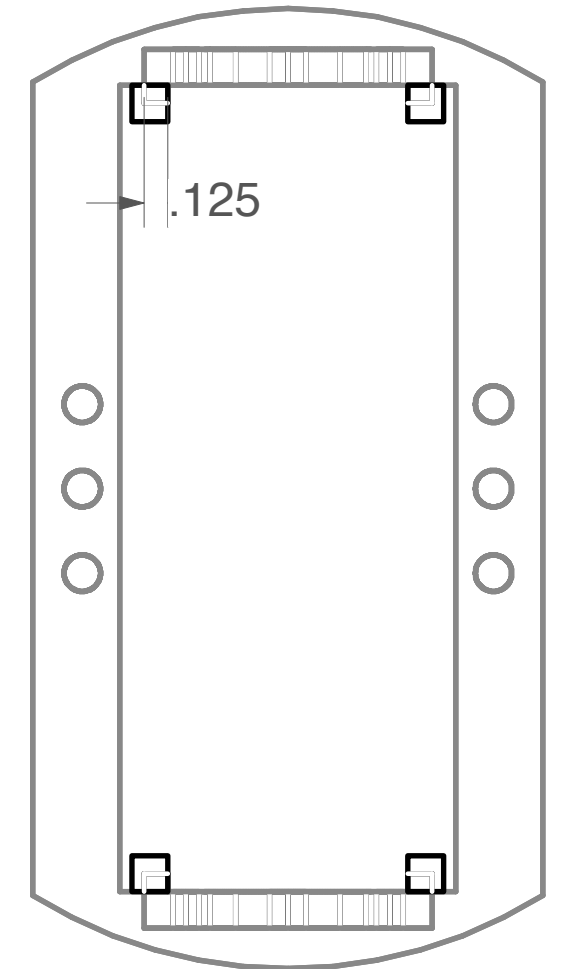
SIDE VIEW



FRONT VIEW WELDED TO MOUNT 1A



SIDE VIEW WELDED TO MOUNT 1A



TOP VIEW WELDED TO MOUNT 1A

ALL DIMENSIONS ARE IN INCHES. TOLERANCES UNLESS OTHERWISE SPECIFIED:

X.XXX +/- .01 < +/- .5



FLORIDA INTERNATIONAL UNIVERSITY
DEPARTMENT OF PHYSICS
11200 SW 8TH ST, MIAMI, FL 33199

DATE 04/27/11	PROJECT DIAGNOSTIC DESIGN	SHEET 3 OF 3
SCALE 1:1	TITLE MOUNT PIECE 2	DRAWN BY RAMONA VALENZUELA PEREZ

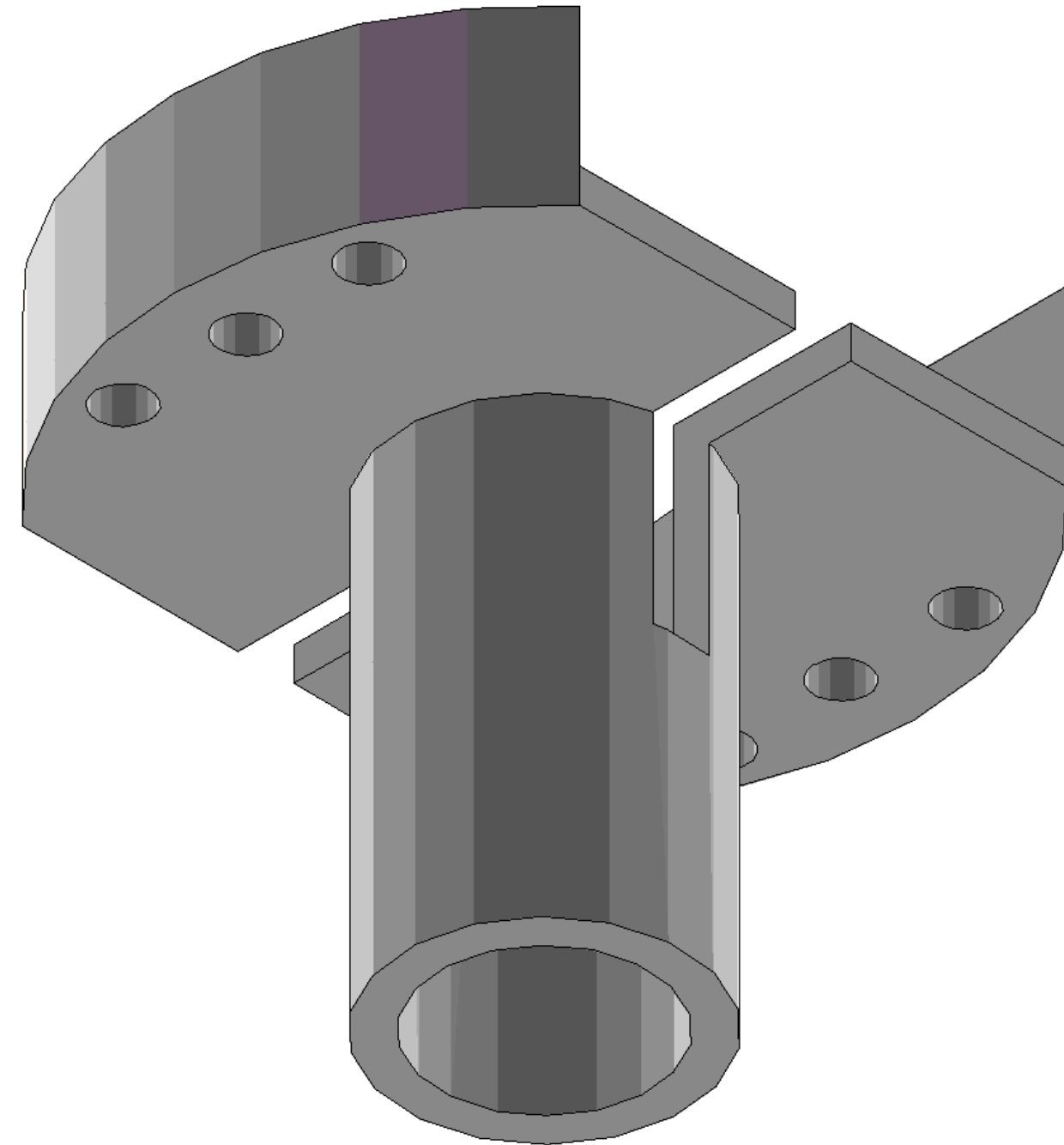
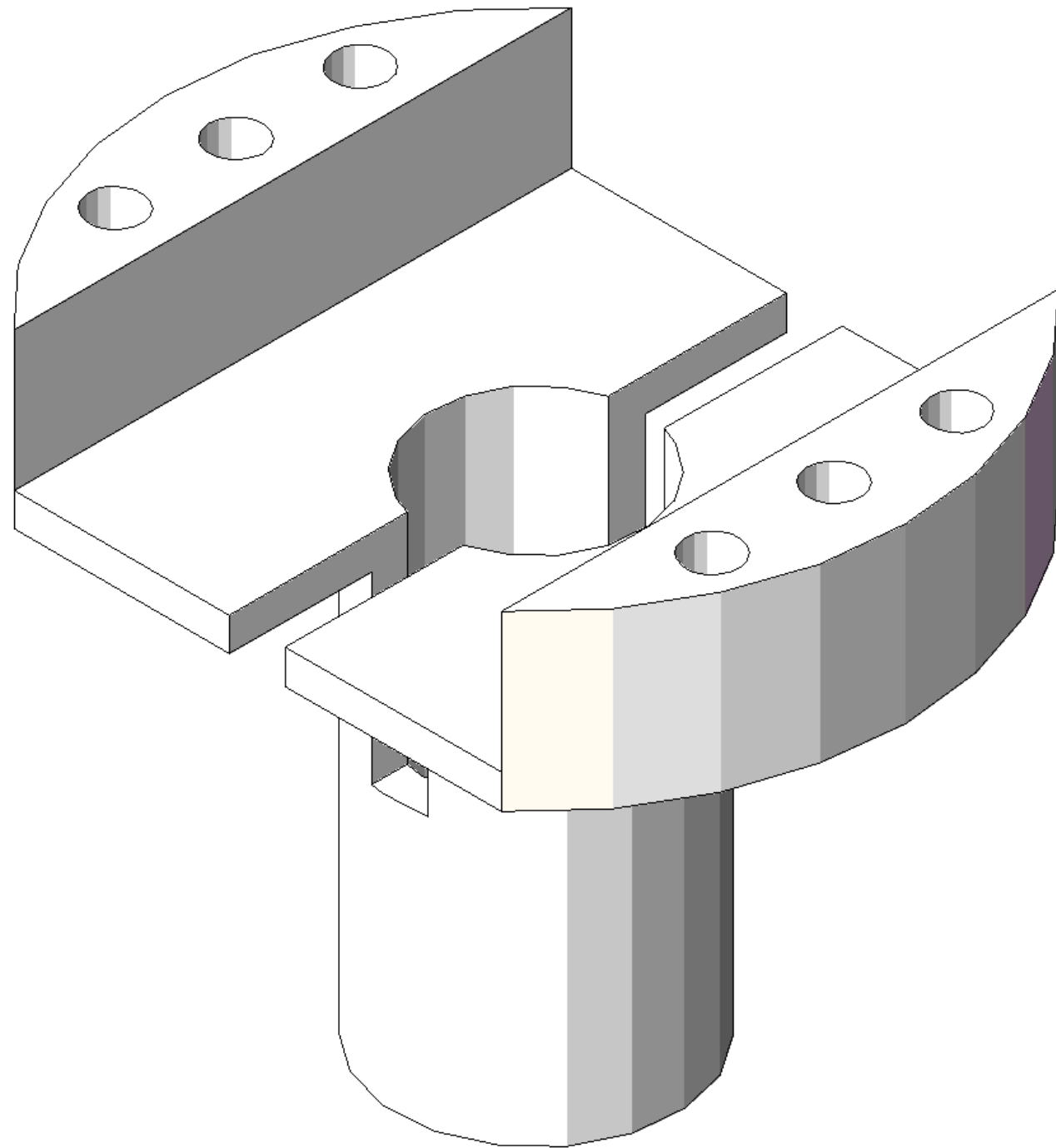
NOTES.

- 1. ONLY MATERIAL TO BE USED IS STAINLESS STEEL 316.
- 2. PPPL WILL SILVER PLATE ALL SCREWS.

VECTORWORKS EDUCATIONAL VERSION

REVISION HISTORY

REV	DESCRIPTION	DATE	APPROVED



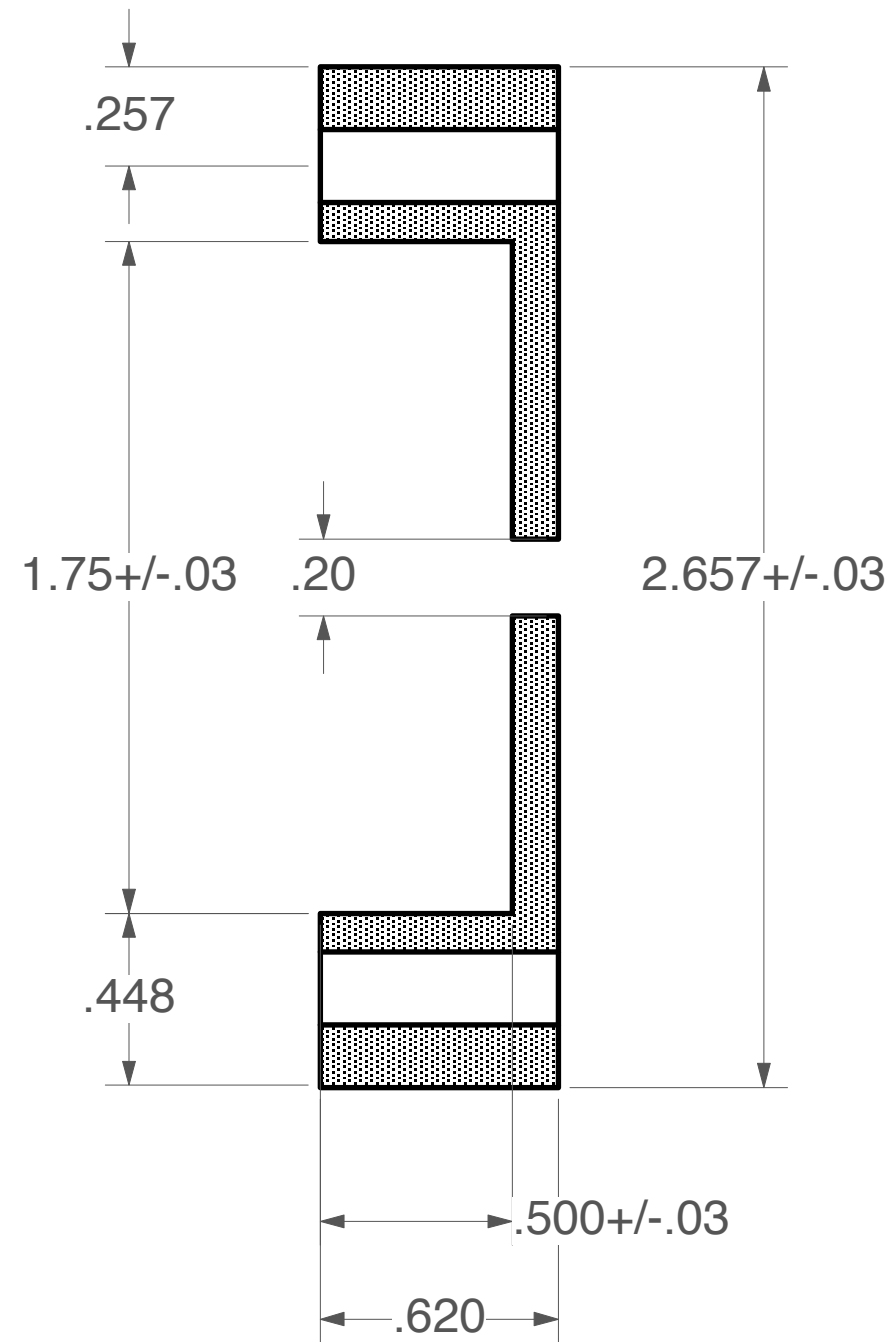
VECTORWORKS EDUCATIONAL VERSION

FIU	FLORIDA INTERNATIONAL UNIVERSITY DEPARTMENT OF PHYSICS 11200 SW 8TH ST, MIAMI, FL 33199	
DATE 04/27/11	PROJECT DIAGNOSTIC DESIGN	SHEET 1 OF 1
SCALE	TITLE ASSEMBLED MOUNTS	DRAWN BY RAMONA VALENZUELA PEREZ

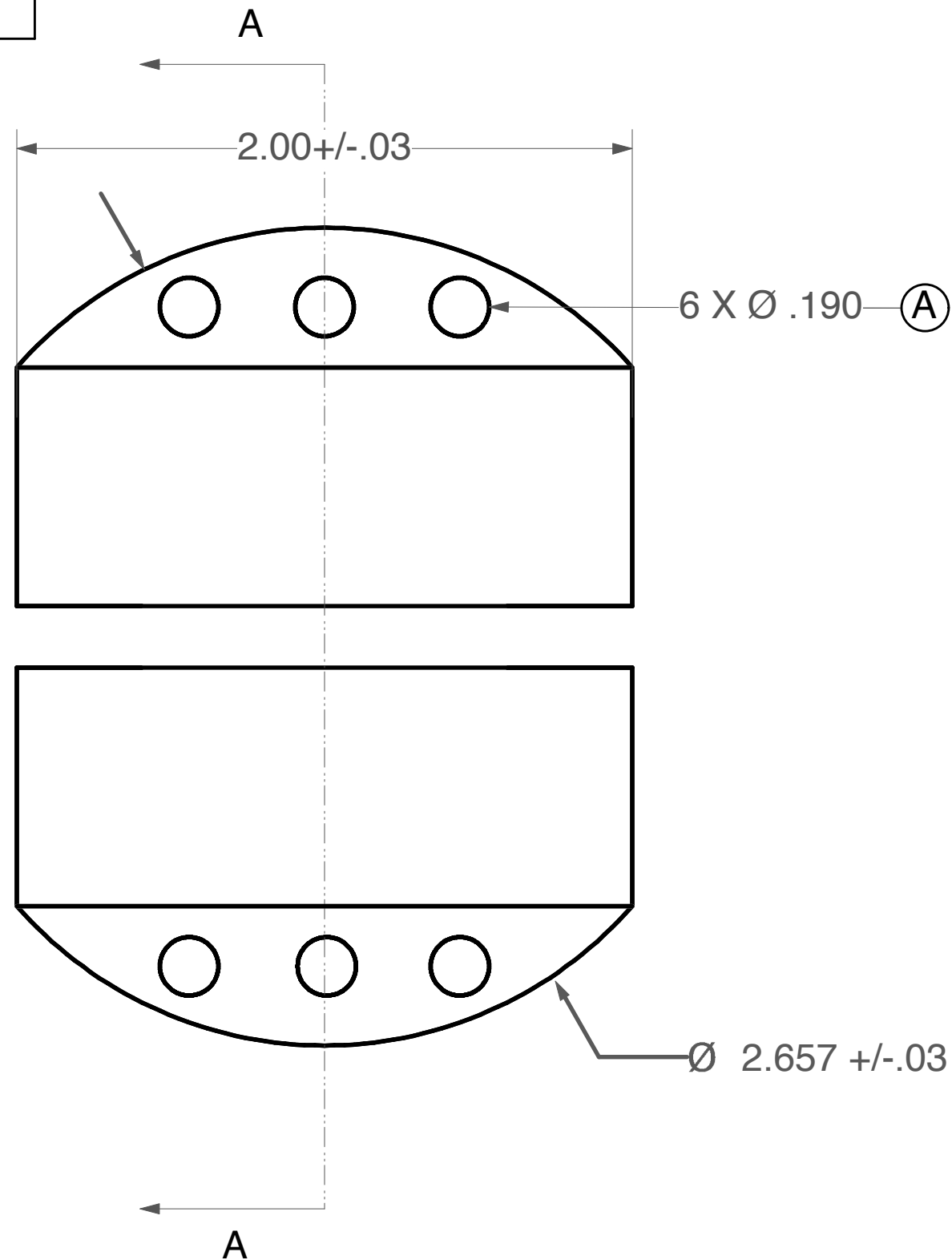
NOTES.

1. MOUNT PIECE 3 MADE TO CONNECT TO BOTTOM OF MOUNT PIECE 3; CORRESPONDING HOLES SHOULD ALIGN.
2. (A) BORE THRU FOR A 10-32 .190 INCH DIAMETER BUTTON HEAD SOCKET CAP SCREW.

REV	DESCRIPTION	DATE	APPROVED



A SECTIONAL VIEW A



TOP VIEW

ALL DIMENSIONS ARE IN INCHES. TOLERANCES UNLESS OTHERWISE SPECIFIED:

X.XXX +/- .01 < +/- .5



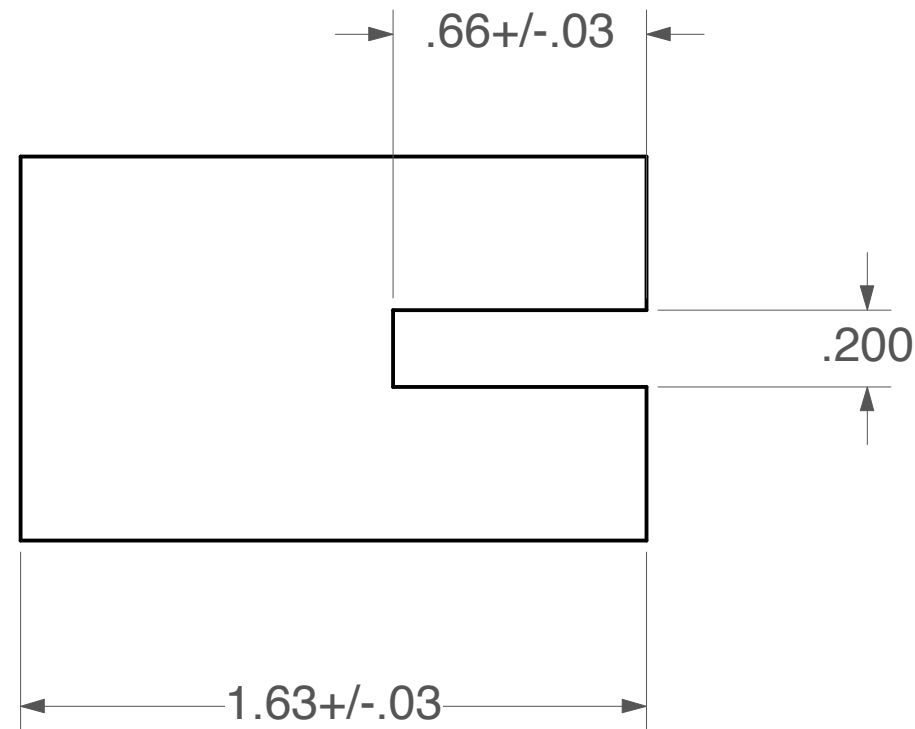
FLORIDA INTERNATIONAL UNIVERSITY
DEPARTMENT OF PHYSICS
11200 SW 8TH ST, MIAMI, FL 33199

DATE 04/27/11	PROJECT DIAGNOSTIC DESIGN	SHEET 1 OF 2
SCALE 2:1	TITLE MOUNT PIECE 3	DRAWN BY RAMONA VALENZUELA PEREZ

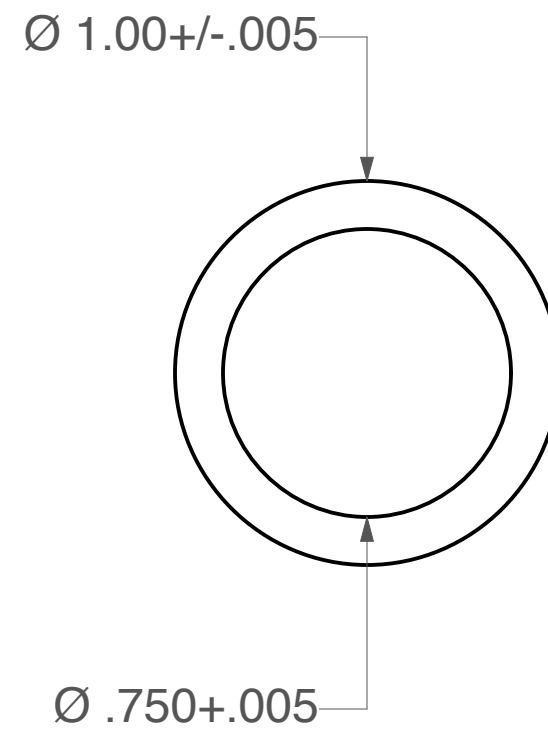
REV	DESCRIPTION	DATE	APPROVED

NOTES.

1. MOUNT PIECE 3 MADE TO CONNECT TO BOTTOM OF MOUNT PIECE 3; CORRESPONDING HOLES SHOULD ALIGN.



SIDE VIEW



BOTTOM VIEW

ALL DIMENSIONS ARE IN INCHES.
TOLERANCES UNLESS OTHERWISE SPECIFIED:

X.XXX +/- .01 \angle +/- .5



FLORIDA INTERNATIONAL UNIVERSITY
DEPARTMENT OF PHYSICS
11200 SW 8TH ST, MIAMI, FL 33199

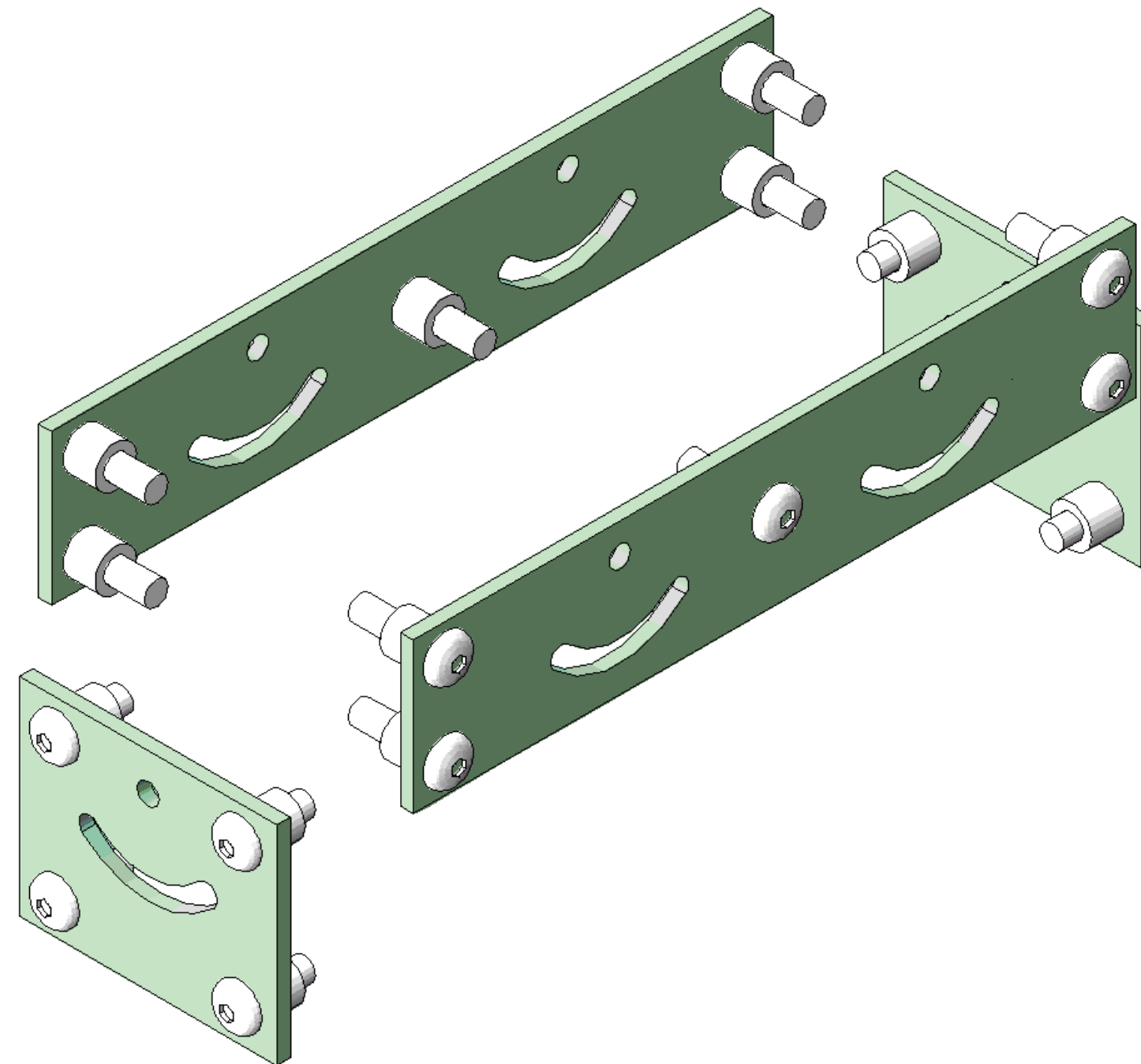
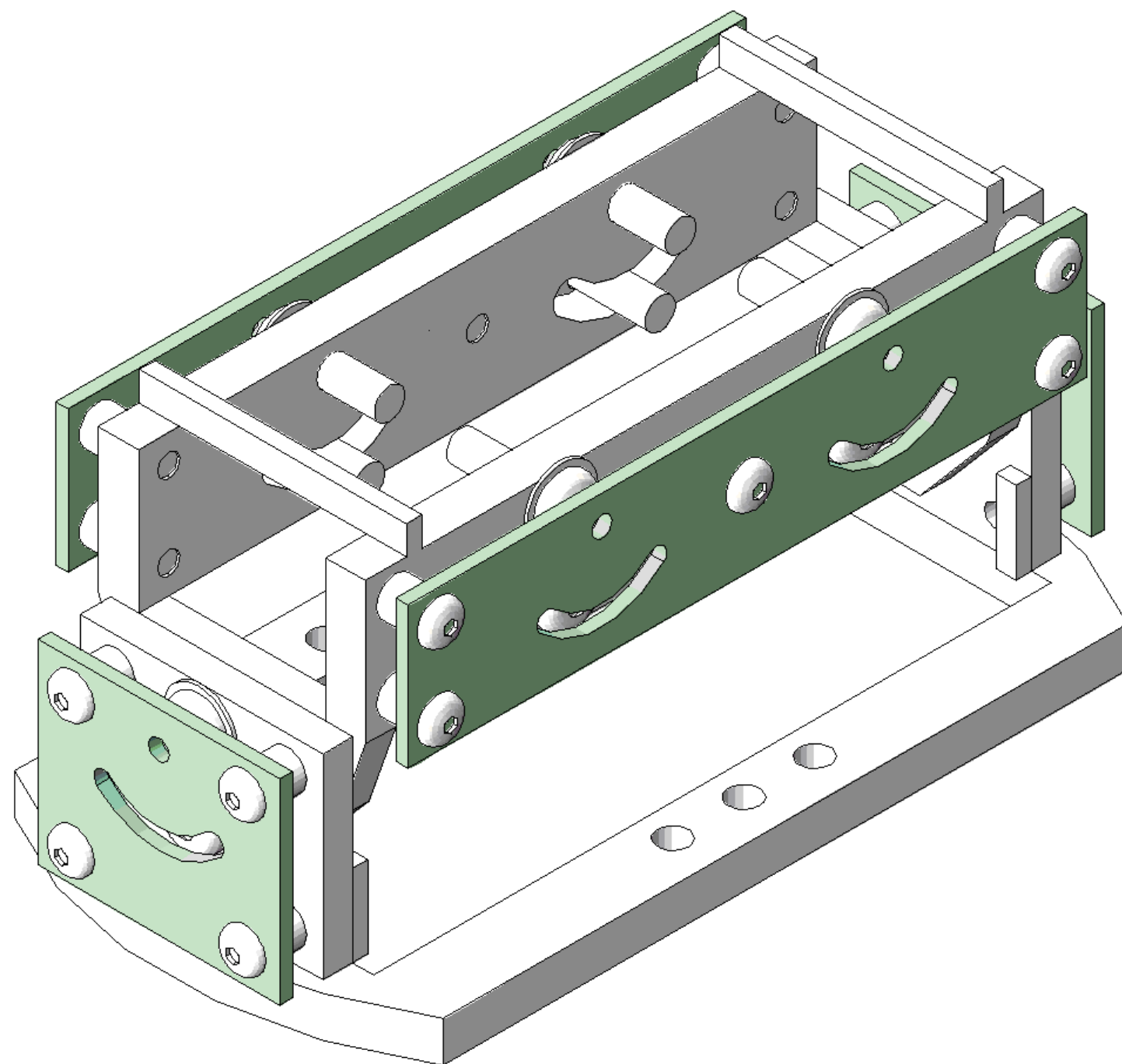
DATE 04/27/11	PROJECT DIAGNOSTIC DESIGN	SHEET 2 OF 2
SCALE 2:1		

TITLE MOUNT PIECE 3	DRAWN BY RAMONA VALENZUELA PEREZ
---------------------	----------------------------------

NOTES.

- 1. ONLY MATERIAL TO BE USED IS STAINLESS STEEL 316.
- 2. PPPL WILL SILVER PLATE ALL SCREWS.

REV	DESCRIPTION	DATE	APPROVED

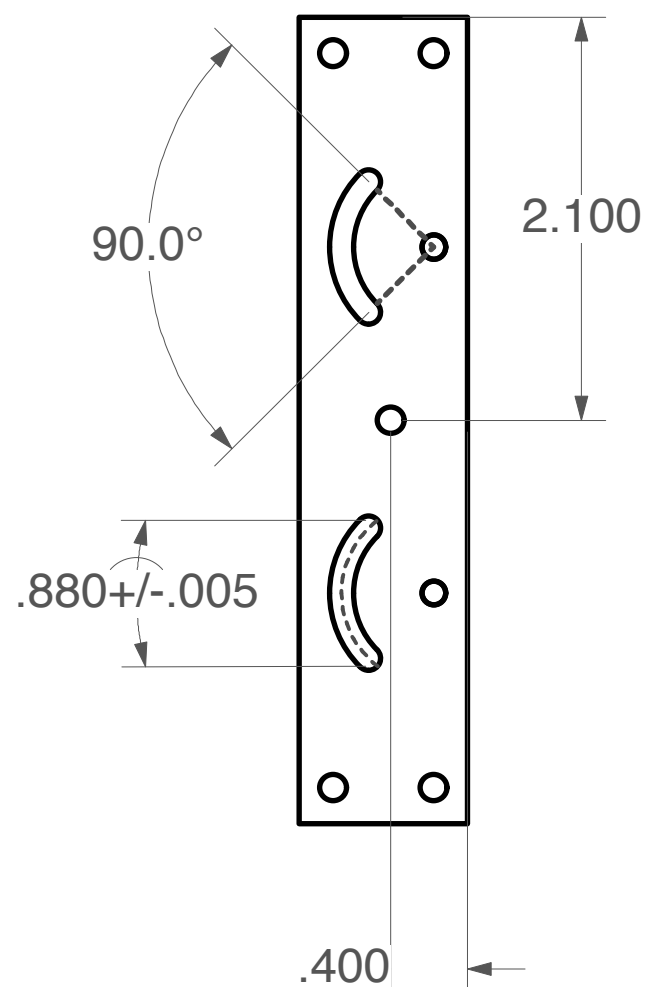
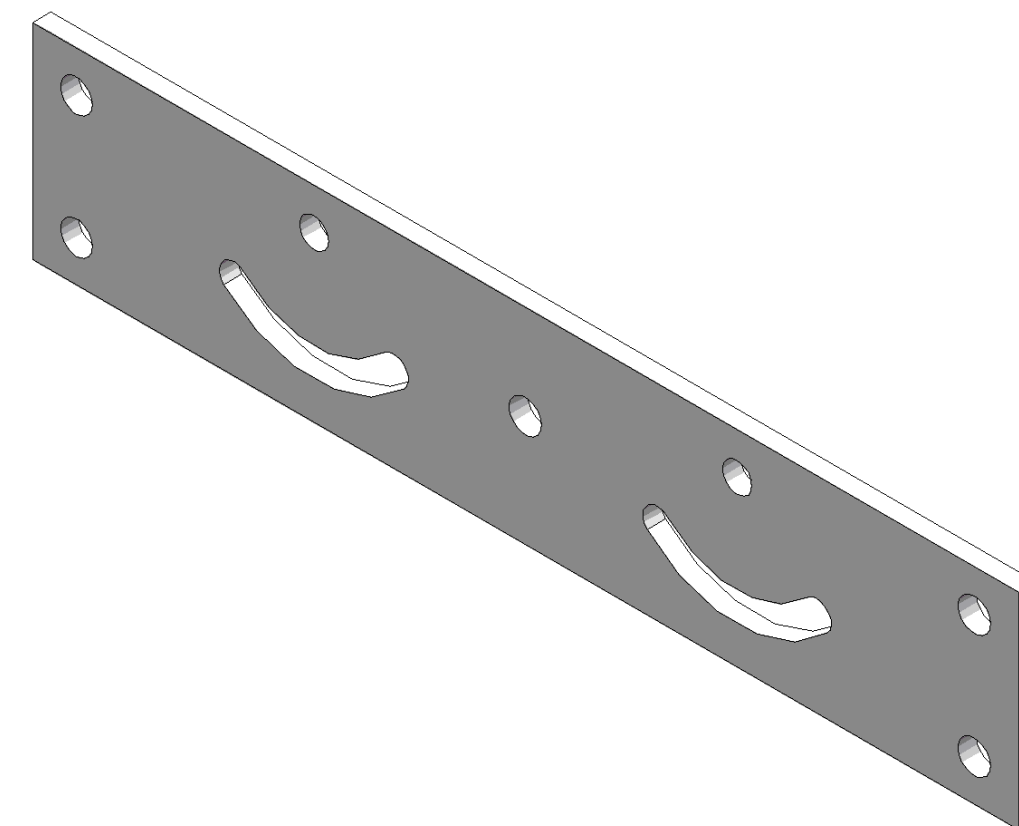


FIU		FLORIDA INTERNATIONAL UNIVERSITY DEPARTMENT OF PHYSICS 11200 SW 8TH ST, MIAMI, FL 33199	
DATE 04/27/11	PROJECT	SHEET 1 OF 1	
SCALE	DIAGNOSTIC DESIGN		
TITLE	ASSEMBLED COVERPLATES	DRAWN BY RAMONA VALENZUELA PEREZ	

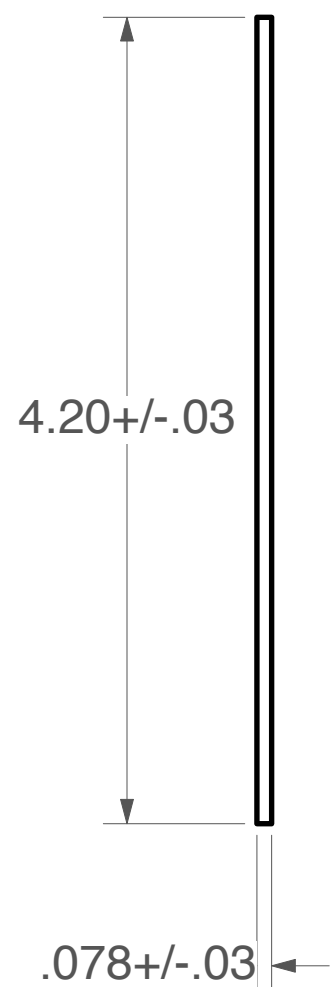
REV	DESCRIPTION	DATE	APPROVED

NOTES.

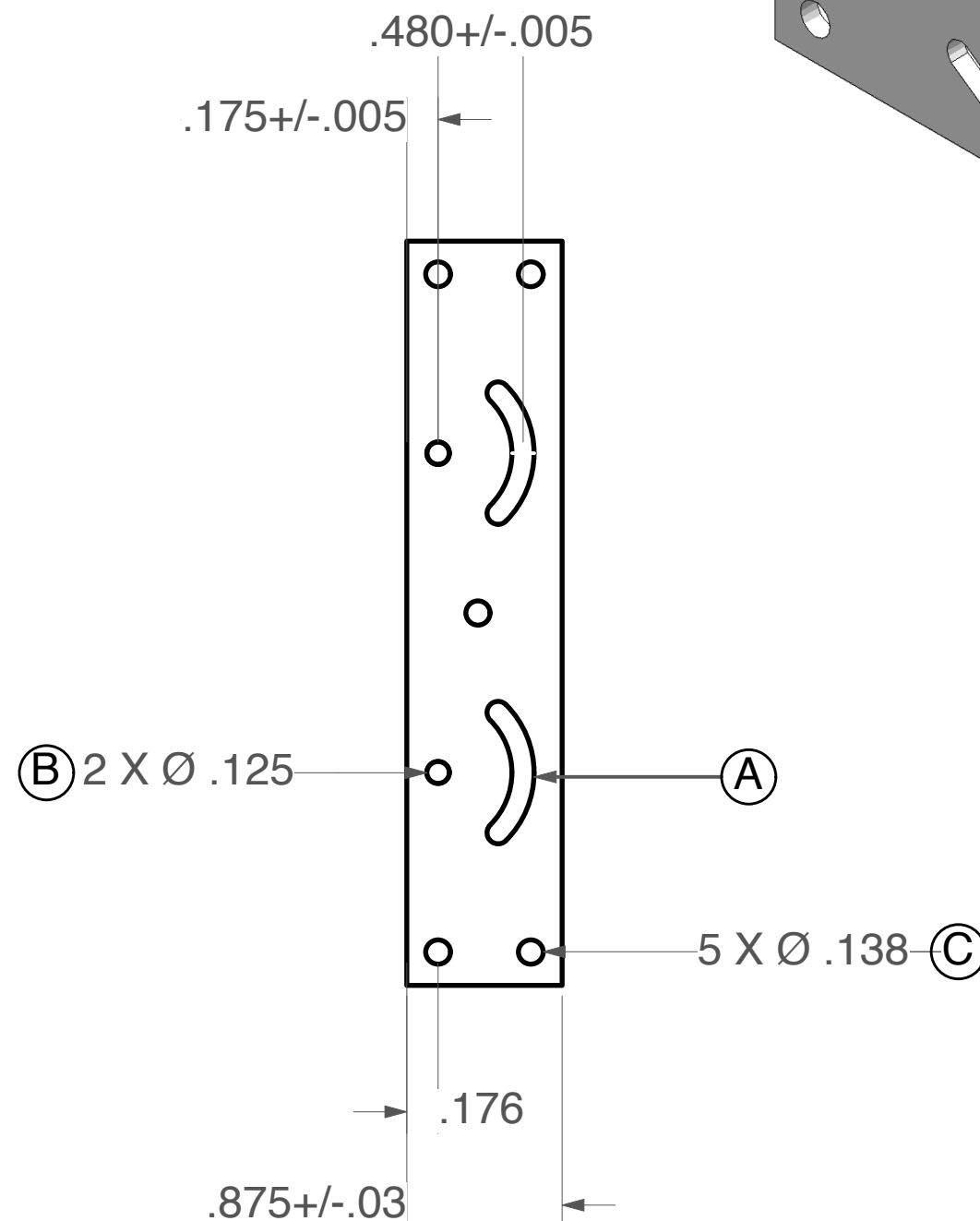
1. COVERPLATE 1 MADE TO FIT OVER MOUNT PIECE 1; CORRESPONDING HOLES SHOULD ALIGN.
2. (A) CREATE ARC ANGLE TO FIT A 5-40 .125 INCH DIAMETER MACHINE SCREW.
3. (B) BORE THRU A .125 INCH DIAMETER HOLE.
4. (C) BORE THRU FOR A 6-32 .138 INCH DIAMETER BUTTON HEAD SOCKET CAP SCREW.
5. 2 X COVERPLATE 1 NEEDED.



SIDE VIEW



FRONT VIEW



SIDE VIEW

ALL DIMENSIONS ARE IN INCHES. TOLERANCES UNLESS OTHERWISE SPECIFIED:

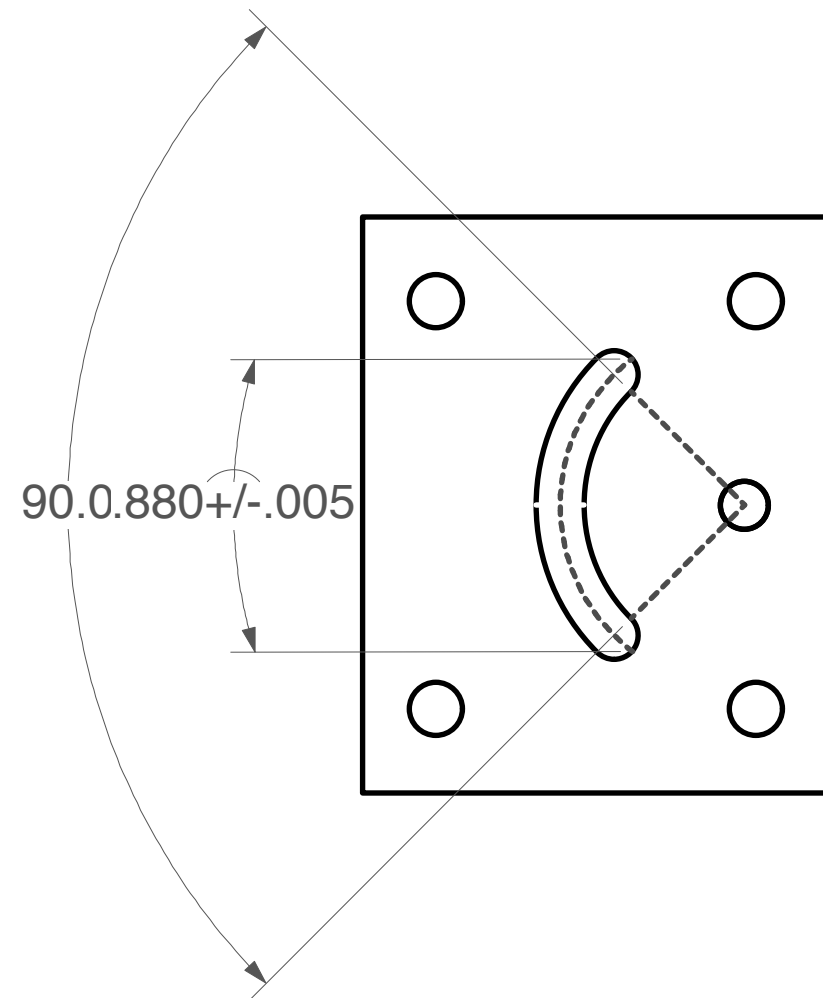
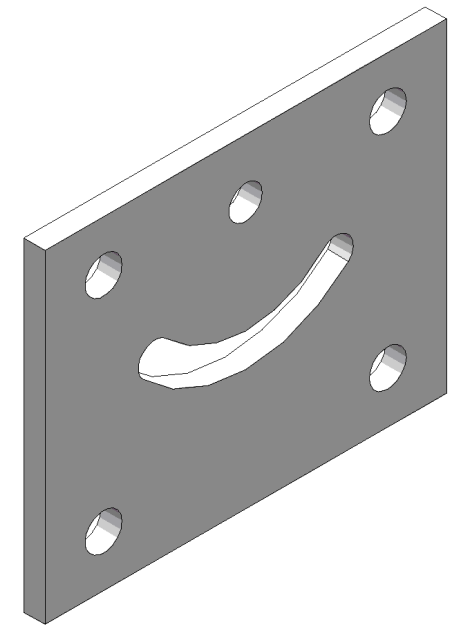
X.XXX +/- .01 \angle +/- .5

FIU	FLORIDA INTERNATIONAL UNIVERSITY DEPARTMENT OF PHYSICS 11200 SW 8TH ST, MIAMI, FL 33199		
	DATE 04/27/11	PROJECT DIAGNOSTIC DESIGN	SHEET 1 OF 1
SCALE 1:1	TITLE COVERPLATE 1		DRAWN BY RAMONA VALENZUELA PEREZ

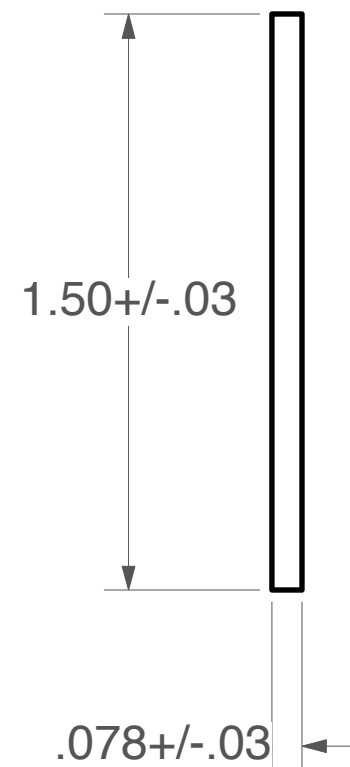
REV	DESCRIPTION	DATE	APPROVED

NOTES.

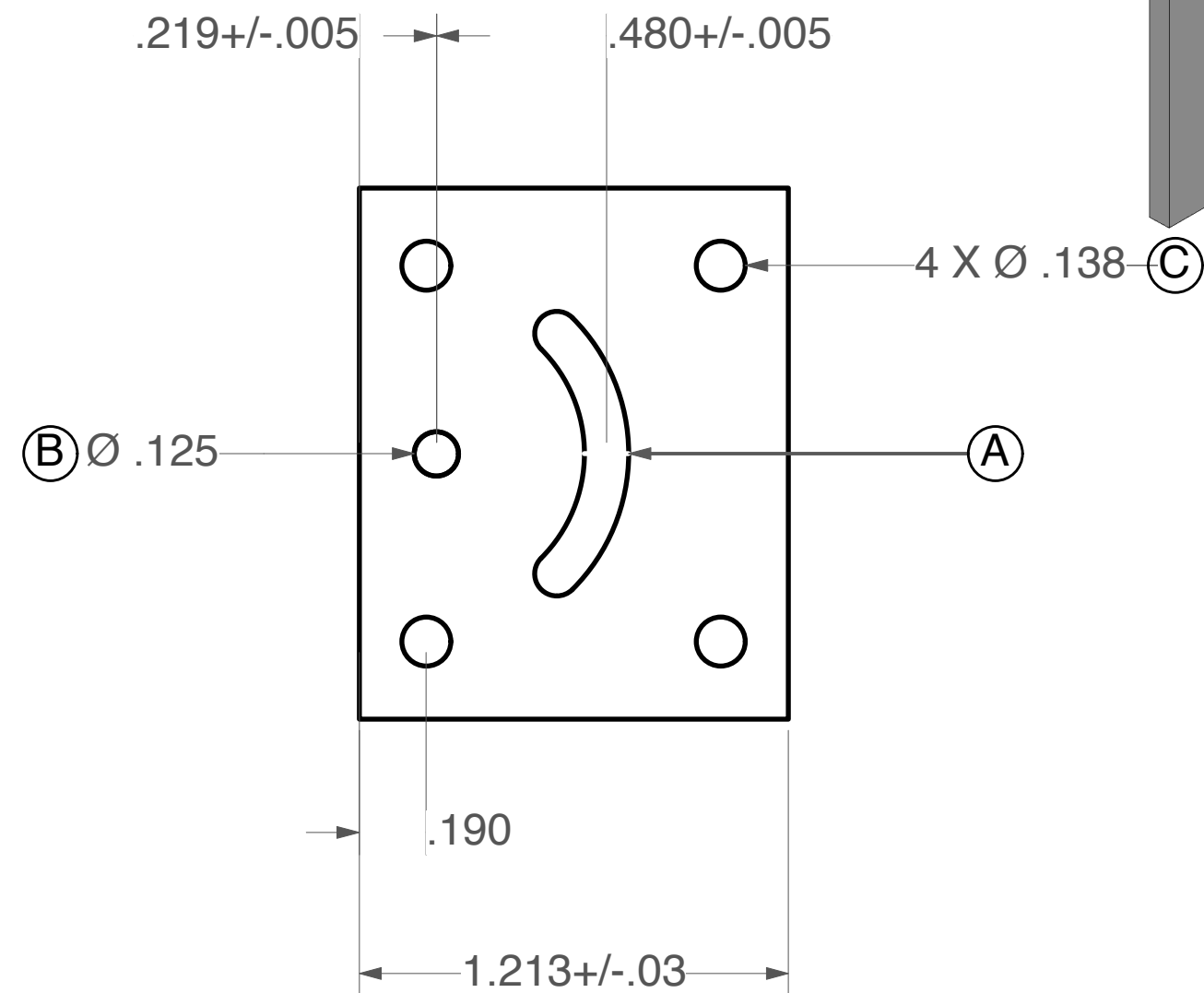
1. COVERPLATE 2 MADE TO FIT OVER MOUNT PIECE 2; CORRESPONDING HOLES SHOULD ALIGN.
2. (A) CREATE ARC ANGLE WITH A 5-40 .125 INCH DIAMETER MACHINE SCREW.
3. (B) BORE THRU A .125 INCH DIAMETER HOLE.
4. (C) BORE THRU FOR A 6-32 .138 INCH DIAMETER BUTTON HEAD SOCKET CAP SCREW.
5. 2 X COVERPLATE 2 NEEDED.



SIDE VIEW



FRONT VIEW



SIDE VIEW

ALL DIMENSIONS ARE IN INCHES. TOLERANCES UNLESS OTHERWISE SPECIFIED:

X.XXX +/- .01 < +/- .5

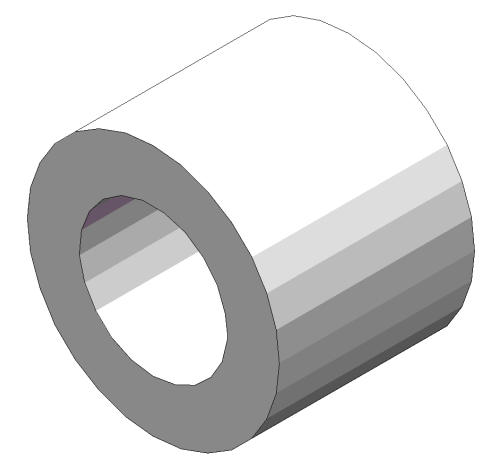
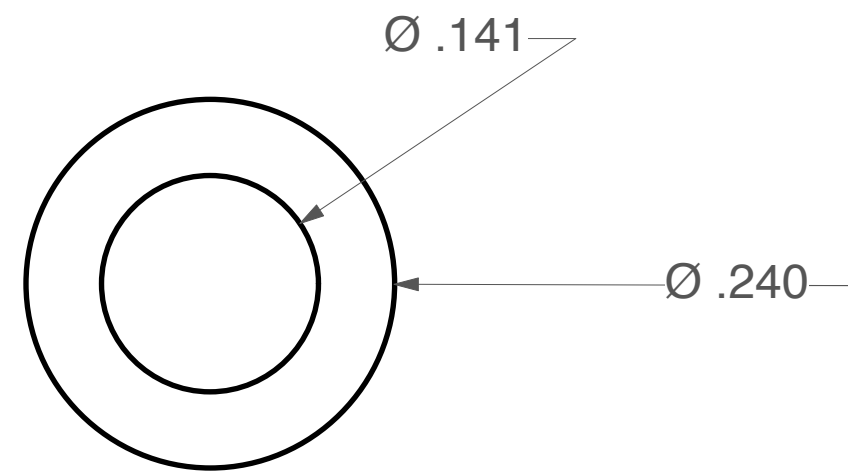
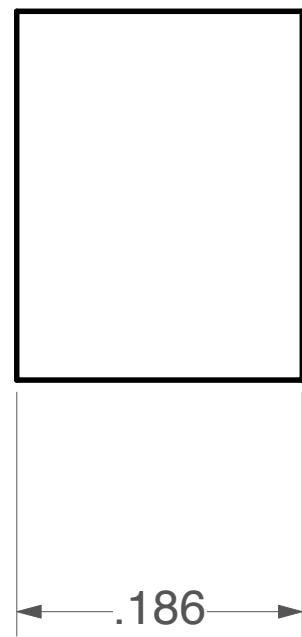
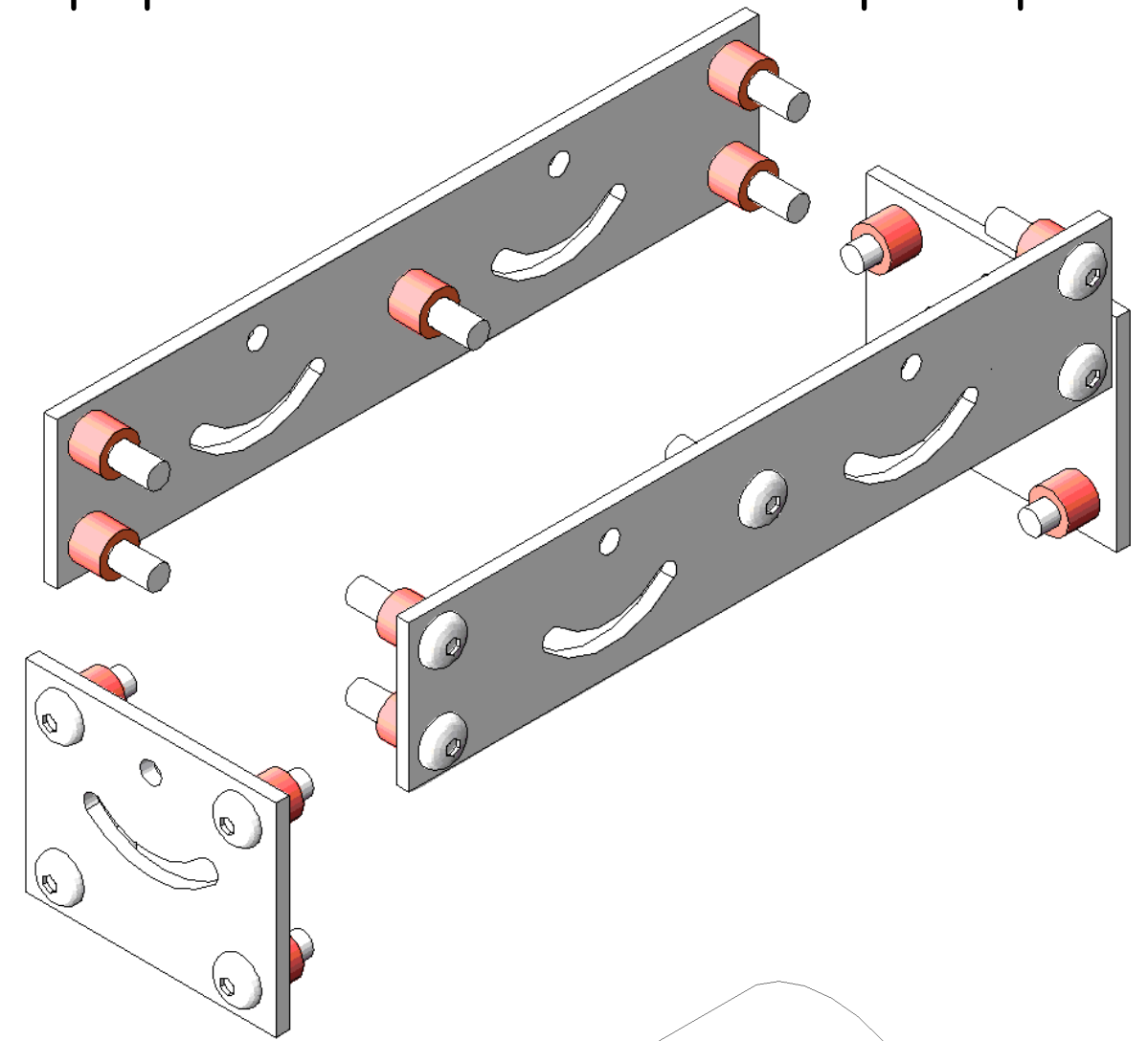


FLORIDA INTERNATIONAL UNIVERSITY
DEPARTMENT OF PHYSICS
11200 SW 8TH ST, MIAMI, FL 33199

DATE 04/27/11	PROJECT DIAGNOSTIC DESIGN	SHEET 1 OF 1
SCALE 2:1	DRAWN BY RAMONA VALENZUELA PEREZ	

TITLE COVERPLATE 2	DRAWN BY RAMONA VALENZUELA PEREZ
--------------------	----------------------------------

REVISION HISTORY			
REV	DESCRIPTION	DATE	APPROVED



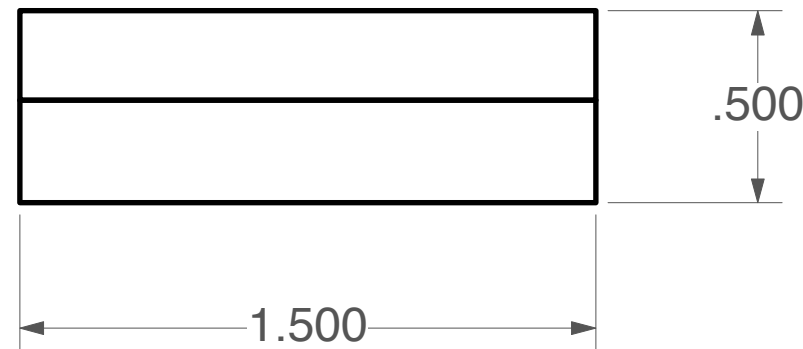
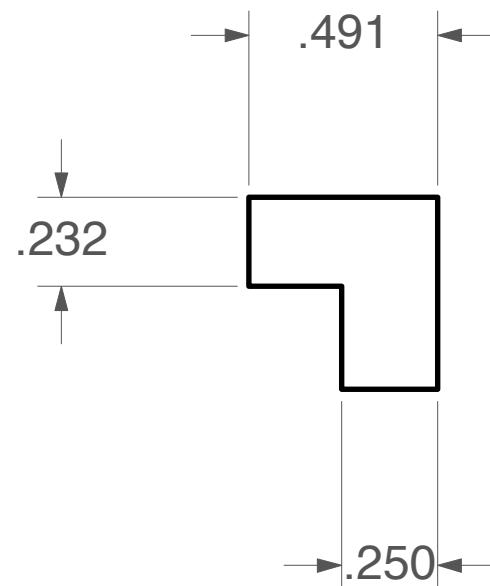
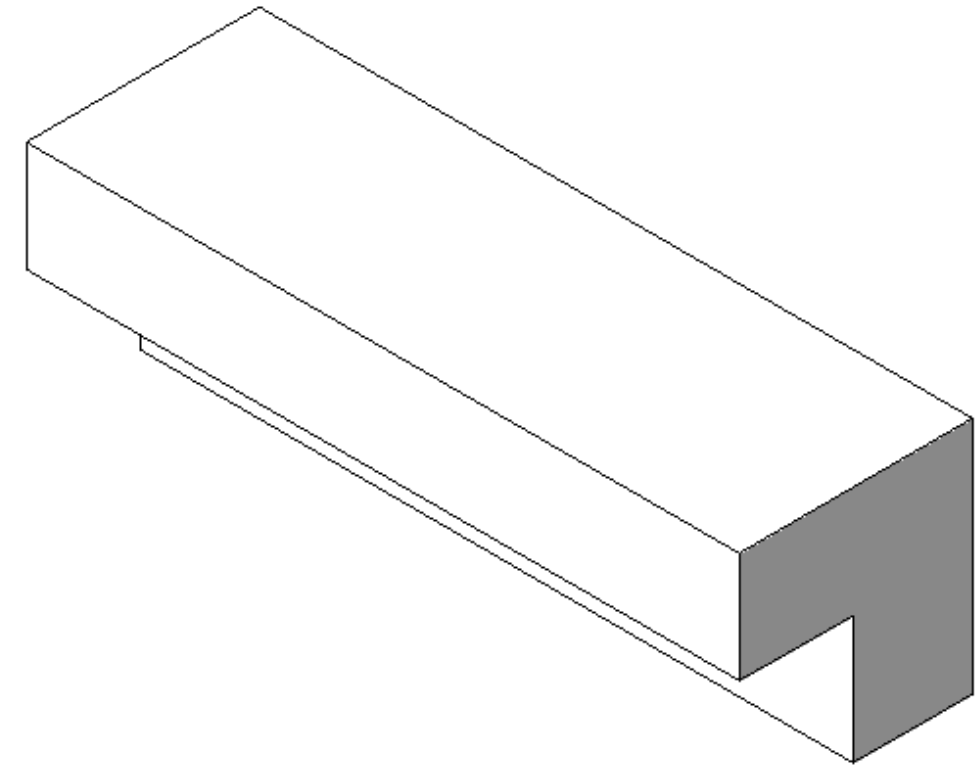
ALL DIMENSIONS ARE IN INCHES.
TOLERANCES UNLESS OTHERWISE SPECIFIED:
X.XXX +/- .01 < +/- .5

FIU	FLORIDA INTERNATIONAL UNIVERSITY DEPARTMENT OF PHYSICS 11200 SW 8TH ST, MIAMI, FL 33199		
	DATE 04/27/11	PROJECT DIAGNOSTIC DESIGN	SHEET 1 OF 1
SCALE 8:1	TITLE COVERPLATE WASHER	DRAWN BY RAMONA VALENZUELA PEREZ	

NOTES.

- 1. ANGLEBLOCK 1 MADE TO ROTATE MODULE 28 DEGREES AWAY FROM CENTER OF MOUNT PIECE 1.

REV	DESCRIPTION	DATE	APPROVED



ALL DIMENSIONS ARE IN INCHES.
TOLERANCES UNLESS OTHERWISE SPECIFIED:

X.XXX +/- .01 \angle +/- .5



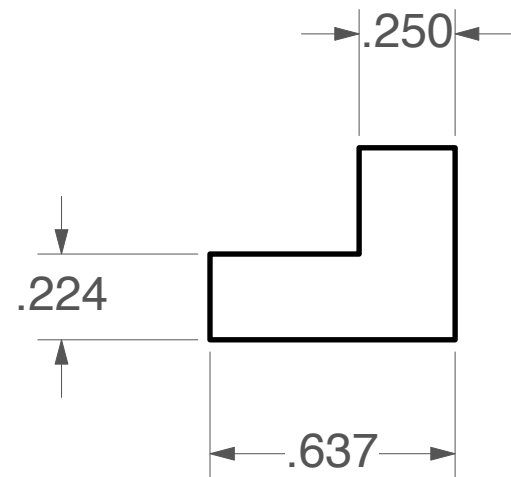
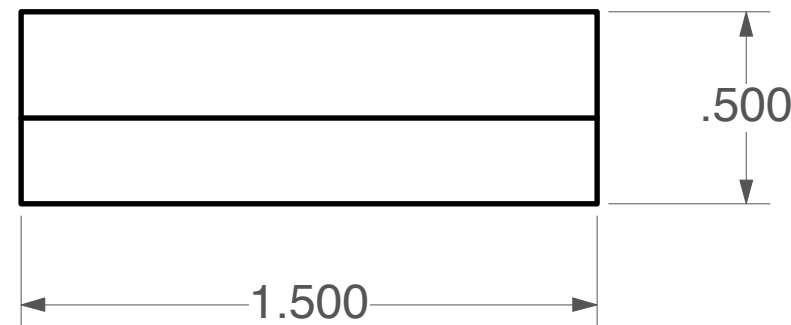
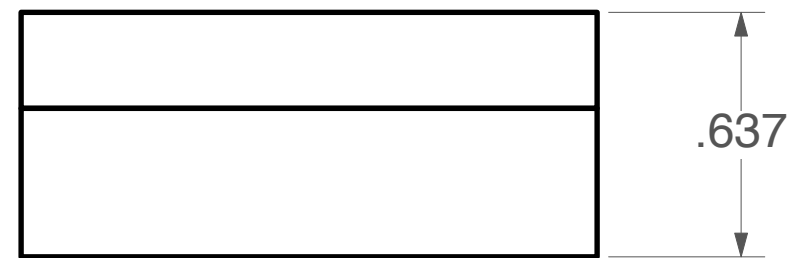
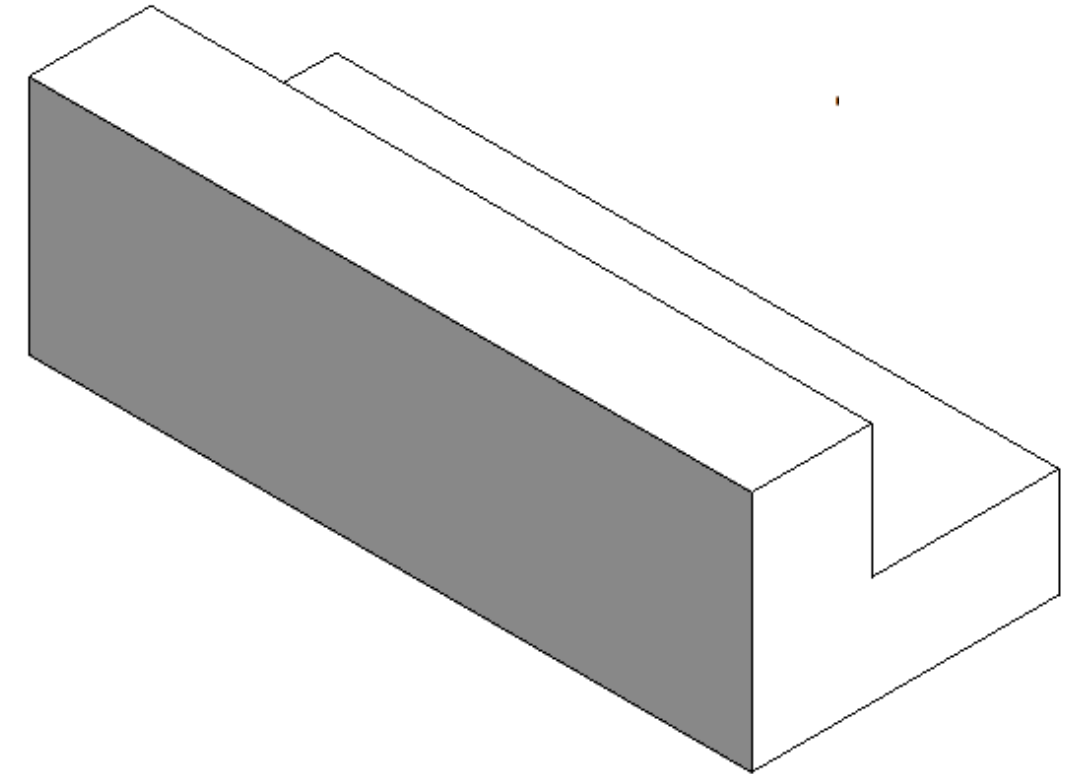
FLORIDA INTERNATIONAL UNIVERSITY
DEPARTMENT OF PHYSICS
11200 SW 8TH ST, MIAMI, FL 33199

DATE 04/27/11	PROJECT DIAGNOSTIC DESIGN	SHEET 1 OF 1
SCALE 2:1	TITLE ANGLEBLOCK 1	DRAWN BY RAMONA VALENZUELA PEREZ

NOTES.

1. ANGLEBLOCK 2 MADE TO ROTATE MODULE 10 DEGREES TOWARDS CENTER OF MOUNT PIECE 1.

REV	DESCRIPTION	DATE	APPROVED



ALL DIMENSIONS ARE IN INCHES.
TOLERANCES UNLESS OTHERWISE SPECIFIED:

X.XXX +/- .01 \angle +/- .5



FLORIDA INTERNATIONAL UNIVERSITY
DEPARTMENT OF PHYSICS
11200 SW 8TH ST, MIAMI, FL 33199

DATE 04/27/11	PROJECT DIAGNOSTIC DESIGN	SHEET 1 OF 1
SCALE 2:1	TITLE ANGLEBLOCK 2	DRAWN BY RAMONA VALENZUELA PEREZ